



New York Yacht Club Invitational Team Race Regatta for the Morgan Cup

August 4-6, 2023

Organizing Authority: New York Yacht Club Regatta Association, Inc.

SAILING INSTRUCTIONS

1 RULES

1.1 The regatta will be governed by the Rules as defined in *The Racing Rules of Sailing (RRS)*.

1.2 Appendix D – Team Racing Rules will apply with the following changes.

- a) Rule D1.1(d) applies. Arm signals are required.
- b) Rule D1.2(c) is deleted and replaced by: “A boat intending to request redress for an incident in the racing area, or protest for an alleged breach of a rule other than a rule of Part 2 or rules 31 or 42, shall, at the first reasonable opportunity after she finishes, inform the Race Committee at the finishing line of her intent to protest or request redress and, when applicable, identify the protested boat.”
- c) Rule D1.3 is changed by adding: “(d) A boat taking a One-Turn or Two-Turns Penalty shall have the spinnaker head below the main-boom gooseneck each time she passes head to wind.”
- d) Rule D2.2(c) is changed to read: “An umpire may penalize any boat that broke a rule, is not exonerated, and did not take an appropriate penalty.
- e) Rule D2.2(d) is deleted and RRS D2.2(e) is renumbered D2.2(d).
- f) Rule D2.3(d), add: “The umpires may decide that any hard contact (contact between hulls and rigs) is damage for the purposes of initiating a penalty. In addition, when there is damage, two race umpires together with another umpire may determine that a race-win penalty as prescribed in SI Addendum E is warranted for one or more boats, without a protest hearing. The boat(s) that broke rule 14 shall be informed as soon as practicable about the damage level and penalty(s) that will be imposed. Only at the time of being so informed, may the boat request a hearing. If the boat requests a hearing, the umpires shall report the incident to the protest committee, which shall act under D3.1(e)(3), and may decide to impose a greater penalty. If no hearing is requested, the umpires shall impose the penalty(s) by reporting it to the Race Committee. RRS D2.6 applies to this decision.”
- g) Rule D2.3, Penalties Initiated by an Umpire, add: “(h) a boat fails to comply with any “Prohibited Items and Actions” in section 2 of Addendum B, Handling the Boats while racing.”
- h) Rule D2.3, Penalties Initiated by an Umpire, add: “The penalty for a breach of rule 42 or a “Prohibited Item and Action” in Addendum B shall be a One-Turn-Penalty.”
- i) Rule D5 is changed to replace all instances of “Race Committee” with “protest committee.”

1.3 Appendix U Audible Racing Signals will apply.

1.4 RRS 64.4(b) first sentence is changed to read: "The protest committee may also penalize a boat that is a party to a hearing under RRS 60.3(d) or 69 for the breach of a rule by a support person by deducting one-half or more race-wins from her team score, or no penalty may be imposed, when the protest committee decides that"[no further change].

1.5 Sonar-type boats will be used. The Sonar Class Rules shall not apply.

1.6 RRS 40.1 shall apply at all times on the water. In addition, the end of the first sentence of RRS 40.1 is changed to read “except while actively adding or removing clothing.” Competitors must supply their own USCG-approved PFDs. PFDs shall be worn outside of all clothing except team identification bibs. Bibs provided by the Organizing Authority or supplied by the team shall be worn over PFDs while racing. A breach of this sailing instruction may only be protested by the race committee, protest committee or Umpires. This changes RRS 60.1(a).

- 1.7** The first sentence of RRS 66.2 is changed to: “A party to a hearing may not ask for a reopening.” Subsequent sentences in this rule, including RRS 66.3, are deleted.
- 1.8** Any boat observed breaking RRS 47 is subject to protest only by the Race Committee, protest committee or Umpires. This changes RRS 60.1(a).
- 1.9** Competitors shall handle the boats and equipment with proper care and seamanship and in accordance with SI 5, Addendum B and Addendum C. Competitors may not protest for a breach of a rule in Addendums B or C. This changes rule 60.1(a).
- 1.10** Participation in the regatta is only by invitation. When the protest committee finds that a boat or team’s competitor has broken one or more rules where there was, repeated breach of boat handling requirements, serious damage caused by reckless sailing or poor seamanship, poor sportsmanship, or misconduct as described in RRS 69.1(b), it shall make a report to the OA who may revoke that team’s invitation and excuse the team from the remainder of the regatta. The OA may also take this action without such a report after consultation with regatta management.
- 1.11** No crew or skipper changes are permitted during the regatta without express written permission from the Organizing Authority, which may grant exceptions to the eligibility requirements.
- 1.12** Where there is a conflict between the rules in the notice of race, the sailing instructions, or any of the other documents that govern this event under item (g) of the definition *Rule*, the sailing instructions shall prevail. This changes RRS 63.7.
- 2** **NOTICES TO COMPETITORS**
Notices to competitors will be posted on the Official Notice Board located at the NYYC Sailing Center.
- 3** **CHANGES IN THE SAILING INSTRUCTIONS**
Any change to the sailing instructions will be posted before 0900 on the day it will take effect and will be discussed during the morning Participants’ Meeting, except that changes made to SI 7 Regatta Format and SI Addendum D – Rotation, except as noted in SI 8.1, may be made verbally and will be effective immediately, in which case Flag “L” will be flown from the signal vessel.
- 4** **SIGNALS MADE ASHORE**
- 4.1** Signals made ashore will be displayed from the flagpole at the head of the Harbour Court dock.
- 4.2** When a Postponement (flag “AP”) is displayed ashore, the warning signal will be made not less than 45 minutes after flag AP is lowered. This changes “Race Signals.”
- 5** **BOATS PROVIDED BY THE ORGANIZING AUTHORITY (OA)**
- 5.1** Sonar-type boats will be provided by the New York Yacht Club for competing teams. The boats have been equalized in performance potential to the extent possible and organized into fleets. An alternate boat may be substituted in case of a breakdown. Claims regarding the performance of the boats will not be grounds for a boat to request redress. This changes RRS 62.1(a).
- 5.2** All equipment shall be used as supplied and no changes, additions or subtractions shall be made other than those permitted by the sailing instructions or the Organizing Authority. Replacement of broken or damaged gear may only be made with gear sanctioned by the OA.
- 5.3** Addendum B, Handling the Boats, lists items and actions that are prohibited, permitted and mandatory.
- 5.4** Addendum C, Equipment List, lists all equipment that shall be onboard at all times.
- 6** **SCHEDULE**
- 6.1** A pre-brief with the umpires is scheduled each morning at 0830 in the NYYC Sailing Center. All skippers shall attend. Crew members are encouraged to attend.
- 6.2** A meeting of all participants will be held each day at 0900 at the NYYC Sailing Center.
- 6.3** The approximate time of the warning signal for the first race will be announced at the Participants’ Meeting.

7 REGATTA FORMAT

7.1 The regatta format and number of races will be determined by the OA depending on sailing conditions and progress of racing.

- a) **Stage 1:** Two round-robins amongst all teams are scheduled. If a second round-robin has been started, and the OA determines that Stage 2 will be comprised only of knock-out matches, the OA may terminate Stage 1 when at least 80% of the races in the second round-robin are completed in order to begin Stage 2. Based on ranking at the conclusion of Stage 1, the fleet will be divided into “gold” and “silver” groups for the purposes of setting up Stage 2.
- b) **Stage 2:** The intended format will be announced before this stage begins, but not later than the Participants’ Meeting on Sunday morning, and will depend on the time remaining, weather conditions and forecast. Stage 2 may consist of one or more mini-round-robin(s) or knock-out matches amongst some or all of the teams in gold and silver based on the ranking at the end of Stage 1, or a combination of both. When a knock-out format is used for the gold fleet, if both NYYC teams are included and they advance to the semi-final series, they will be scheduled to meet each other in one of those matches. Scores from Stage 1 will only carry forward for any mini-round-robins. No scores from round-robins will carry forward to knock-out matches.

Gold teams will be ranked ahead of silver teams for the final regatta ranking. Within gold and silver groups, teams participating in knock-out matches will be ranked ahead of those that did not participate.

7.2 The Event Chair, in consultation with the Principal Race Officer and the Chief Umpire, may terminate or alter the format in progress, change assigned boats, change the order of races, or make such other arrangements as may be necessary to conclude the event. This changes rule D4.2(b).

8 FLEET DESIGNATION AND STARTING ORDER

8.1 Teams will be assigned to boats as designated on the rotation in SI Addendum D - Rotation.

8.2 Boats will be identified in Addendum D by the sail patch color (for example yellow, pink, black, gray, red, green, blue) and mainsail number.

9 RACING AREA AND DANGER AREAS

The racing area will be on Narragansett Bay. The location of the rendezvous area will be announced at the Participants’ Meeting. The primary location and danger areas are noted in SI Addendum F.

10 COURSE

- 10.1** The course will be a “port box” - Start – M1 – M2 – M3 – M4 – Finish, with marks left to port and the final leg approximately twice as long as the first leg. See Addendum G for a course diagram.
- 10.2** On the leg from M2 to M3, the Race Committee signal vessel and the port end starting/finishing mark are marks of the course. The signal vessel shall be passed to starboard or the starting/finishing mark shall be passed to port, and those are the required sides, respectively, once a boat enters the *zone* and RRS 18 applies for that mark.
- 10.3** The Race Committee may change a leg of the course that begins at a rounding mark by changing the position of the next mark or the finishing line, but no mark shall be moved when any boat is on the leg that it terminates. Subsequent legs may be changed to maintain the course configuration. There will be no visual or audible signals for a course change. This changes RRS 33.
- 10.4** Courses may not be shortened. This changes RRS 32 and Race Signal Flag “S”.

11 MARKS

Marks 1, 2, 3 and 4 will be orange inflatables. The starting/finishing mark will be a green inflatable.

12 START AND FINISH

The starting and finishing lines will be between a staff displaying an orange flag on the signal vessel and the course side of an inflatable mark.

13 RECALLS

Individual recalls will be signaled by the hail of the bow number (or some other clearly distinguishing feature) of each recalled boat. Flag X will be displayed for up to one minute following the start. This changes Rule U4.

14 TIME LIMIT

The time limit will be 30 minutes for all boats on one team to sail the course and *finish*. The other team's boats racing at that time shall be scored the points they would have received had they finished. This changes Rule D3.2.

15 UMPIRES

15.1 Rule D2, Umpired Races, shall apply.

15.2 Competitors may assist the umpires when their team is not racing at the discretion of the chief umpire and shall not be considered to have a *conflict of interest* while serving in this role.

15.3 Protest committees shall be comprised of umpires as appointed by the chief umpire or a race lead umpire.

16 SPINNAKERS

When the Race Committee signal vessel displays flag "K" at or before the warning signal, spinnakers shall not be used for that race.

17 DAMAGE

17.1 When damage occurs or is likely to have occurred, regardless of whether a boat has been penalized or an umpire has instructed a boat to report to the Bosun for damage inspection, that boat shall report to the Bosun immediately at the end of the race in which the damage has occurred.

17.2 The OA may require the damage deposit to be restored to its original amount before a team will be permitted to continue racing.

18 SPORTSMANSHIP

Competitors are expected to fully comply with RRS 2 at all times. Abuse or intimidation of other competitors, race officials, or officials of the host club will not be tolerated. All such incidents, whether or not they include umpire-initiated penalties, shall be reported to the Chief Umpire.

19 COACHING AND SUPPORT VESSELS

The following limitations and restrictions apply to coaches and any coach/support vessels:

- a) Except as directed by the OA, competitors shall have no communication with, be tied to or transfer provisions or equipment to and from any support vessel from the first warning signal of the day until racing has been concluded for the day for that team.
- b) Support and spectator vessels shall not approach closer than 50 meters to any boat that is racing. In addition, support vessels shall stay at least 50 meters outside any layline and shall not be located directly above any windward marks or the finishing line.

20 NOTES

20.1 Competitors are reminded that Narragansett Bay and its approaches are considered restricted channels for commercial traffic and other vessels restricted in their ability to maneuver. Competitors must comply with the government right-of-way rules when in proximity to commercial or privileged marine traffic.

20.2 Government buoys, when not designated as having to be observed, have no required side except for safe navigation.

21 SAFETY

Competitors participate in the regatta entirely at their own risk. See RRS 3, Decision to Race. The Organizing Authority, New York Yacht Club, and any official sponsors will not accept any liability for material damage or personal injury or death sustained in conjunction with or prior to, during or after the regatta. Attention is also drawn to RRS 46.

SI ADDENDUM A – LIST OF RACE OFFICIALS & PREVIOUS WINNERS

ORGANIZING COMMITTEE

Steve Kirkpatrick	Event Chair
Susan Daly	NYYC TR Sub-Committee Co-Chair
Emily Maxwell	NYYC TR Sub-Committee Co-Chair
Ben Kinney	Chair, NYYC Sailing Committee
Lynn Lynch	Sailing Director
Elizabeth Duggan	NYYC Racing Manager

RACE COMMITTEE

AJ Evans, PRO
Julie Wilson
Basia Karpinska
Cathy Peacock
Lisl Dunlop
Steve Minninger
Andy Giglia
Joe Larson
Cory Sertl

UMPIRES

Steven Wolff, Chief Umpire
Jeff Borland
Tom Duggan
Britt Hall
Greg Kiely
Carrie Greene
Alice Leonard
Rick Myers
Geoff Pedrick
John Pratt
Peter Wilson
Jeff Woodward

PREVIOUS WINNERS

2003	New York Yacht Club
2004	Seawanhaka Corinthian Yacht Club
2005	New York Yacht Club
2006	New York Yacht Club
2007	New York Yacht Club
2008	New York Yacht Club
2009	New York Yacht Club
2010	Seawanhaka Corinthian Yacht Club
2011	Seawanhaka Corinthian Yacht Club
2012	Seawanhaka Corinthian Yacht Club
2013	New York Yacht Club
2014	Newport Harbor Yacht Club
2015	New York Yacht Club
2016	San Diego Yacht Club
2017	San Diego Yacht Club
2018	St. Francis Yacht Club
2019	St. Francis Yacht Club
2020	Not Raced
2021	Corinthian Yacht Club
2022	Eastern Yacht Club

SI ADDENDUM B - HANDLING THE BOATS

1 GENERAL

While all reasonable steps are taken to equalize, variations in the boats will not be grounds for redress. This changes RRS 62.

2 PROHIBITED ITEMS and ACTIONS

Except in an emergency or in order to prevent damage or injury, or when directed by an umpire otherwise, the following are prohibited:

2.1 Actions subject to umpire-initiated penalties during a race:

- a) Moving the mast blocks.
- b) Adjusting or altering the tension of standing rigging, excluding the backstay.
- c) Removing/adjusting tiller tie-down strap.
- d) The use of electronic instruments or smartphone/tablet apps, other than watches.
- e) Using the spinnaker pole to wing out the foresail.
- f) The use of the shrouds (including any inner shrouds) to facilitate tacking or gybing, or to aid the projection of a crew member outboard is prohibited.
- g) Sitting outboard (including legs) of the toe rail is prohibited, but the upper body may lean outboard. Using lazy sheets and control lines for the purpose of hiking normally while seated is permitted.
- h) Radio transmission, except to report damage or in response to a request from the RC.

2.2 Actions subject to protest by the protest committee or Race Committee:

- a) Any additions, omissions or alterations to the equipment supplied.
- b) The replacement of any equipment without the sanction of the RC.
- c) Sailing the boat in a manner that it is reasonable to predict that significant further damage would result.
- d) Moving equipment from its normal stowage position except when being used.
- e) Boarding a boat without prior permission.
- f) Taking a boat from its berth or mooring without having paid the required damage deposit or having permission from the RC, or, on race days, while “AP” is displayed ashore.
- g) Hauling out a boat or cleaning surfaces below the waterline.
- h) Attaching lines to the fabric of spinnakers.
- i) Marking directly on the hull or deck with permanent ink.
- j) Perforating sails, even to attach telltales.
- k) The use of any equipment for a purpose other than that intended or specifically permitted.

3 PERMITTED ITEMS and ACTIONS

The following are permitted:

3.1 Taking on board the following equipment:

- (a) basic hand tools
- (b) adhesive tape or Velcro tape but not duct tape
- (c) line (elastic or otherwise of 4 mm diameter or less)
- (d) non-permanent marking pens
- (e) tell-tale material
- (f) watch, timers and hand held compass
- (g) shackles, plastic clips, cotter pins/ring dings and clevis pins
- (h) spare flags
- (i) VHF radio (Required)

3.2 Using the items in 3.1 to:

- (a) prevent fouling of lines, sails and sheets, or securing the spinnaker halyard
- (b) attach tell tales
- (c) prevent sails being damaged or falling overboard
- (d) mark control settings (adhesive tape only)
- (e) make minor repairs and permitted adjustments
- (f) make signals as per Appendix D2

3.3 Fixing a spinnaker sheet catcher at the bow, providing that it does not extend the length of the boat more than 100 mm and does not require any repair or maintenance after removal.

3.4 Changing the number of mainsheet or jib sheet purchases.

4 MANDATORY ITEMS and ACTIONS

The following are mandatory:

4.1 At the end of each sailing day:

- (a) rolling, bagging and placement of the sails as directed
- (b) leaving the boat in the same state of cleanliness as when first boarded that day
- (c) releasing backstay tension

4.2 At the end of the final day for a particular boat, cleaning the boat (cabin and decks), removing all trash & recyclable items and removing all tape and marks.

4.3 Any request to alter, in any way, the equipment on a boat shall be in writing and worded to permit a yes/no answer.

4.4 Complying with any regulations, including speed restrictions and navigation marks, while leaving or returning to the berth or mooring.

4.5 A breach of items 4.1 and 4.2 will be considered as damage and the cost of rectification will be deducted from the damage deposit.

SI ADDENDUM C - EQUIPMENT LIST

The following non-fixed items, provided by the OA, are to be carried on board at all times in their designated place while sailing. Any loss shall be reported on the daily damage report.

SONARS

SAILS and SAILING EQUIPMENT

- Mainsail and set of battens
- Jib
- Spinnaker
- Three sail bags
- One spinnaker pole
- Two spinnaker sheets
- Jib sheets
- Two twings
- Tiller extension
- Two headsail track cars

SAFETY GEAR

- Life jackets for each crew member (provided by competitors or OA)
- Paddle
- Bucket & sponge
- Bilge pump
- Throwable cushion

GROUND TACKLE

- Anchor and chain
- Anchor line

MOORING LINES and FENDERS

- Four dock lines
- One black tow line
- Two blue (or white) fenders

SI ADDENDUM D – ROTATION

See separate attachment.

SI ADDENDUM E - PENALTIES FOR DAMAGE RESULTING FROM CONTACT BETWEEN BOATS RACING

The umpires may impose a penalty without a protest hearing for breaking rule 14, unless a boat involved in the incident boat requests a hearing, in which case the umpires shall report the incident to the protest committee. If it has good reasons to do so, the protest committee may impose a greater penalty than what the umpires determined was appropriate. This addendum explains how damage will be assessed and prescribes the appropriate penalty level. There are a number of things we are trying to achieve with damage penalties:

- Minimize damage to keep costs down and avoid delays while boats are repaired.
- Ensure that penalties fit the breach and are consistent.

Damage Levels

Level	Extent	Effect
Level A Minor Damage	Does not significantly affect the value, general appearance, or normal operation of the boat.	Boat may race without repair although some minor surface work may be required after the event. Repairs should not normally require more than one (1) hour of work.
Level B Damage	Affects the value and/or general appearance of the boat.	The damage does not affect the normal operation of the boat in that race but may need some (temporary) work before racing again. Requires more than one (1) hour of work but should not normally require more than three (3) hours of work.
Level C Major Damage	The normal operation of the boat is compromised and its structural integrity may be impaired.	The boat will need some repair work before racing again. Requires more than three (3) hours of work.

Penalties

Race-win penalties may be imposed by umpires after a race to boats that break rule 14. Any penalties are deducted from one boat's or both boats' team's total race wins for the round-robin or knock-out match in which the damage occurred. In the event that both boats are given the same penalty in a race during a knock-out match, the penalties are offsetting and will be disregarded for scoring purposes.

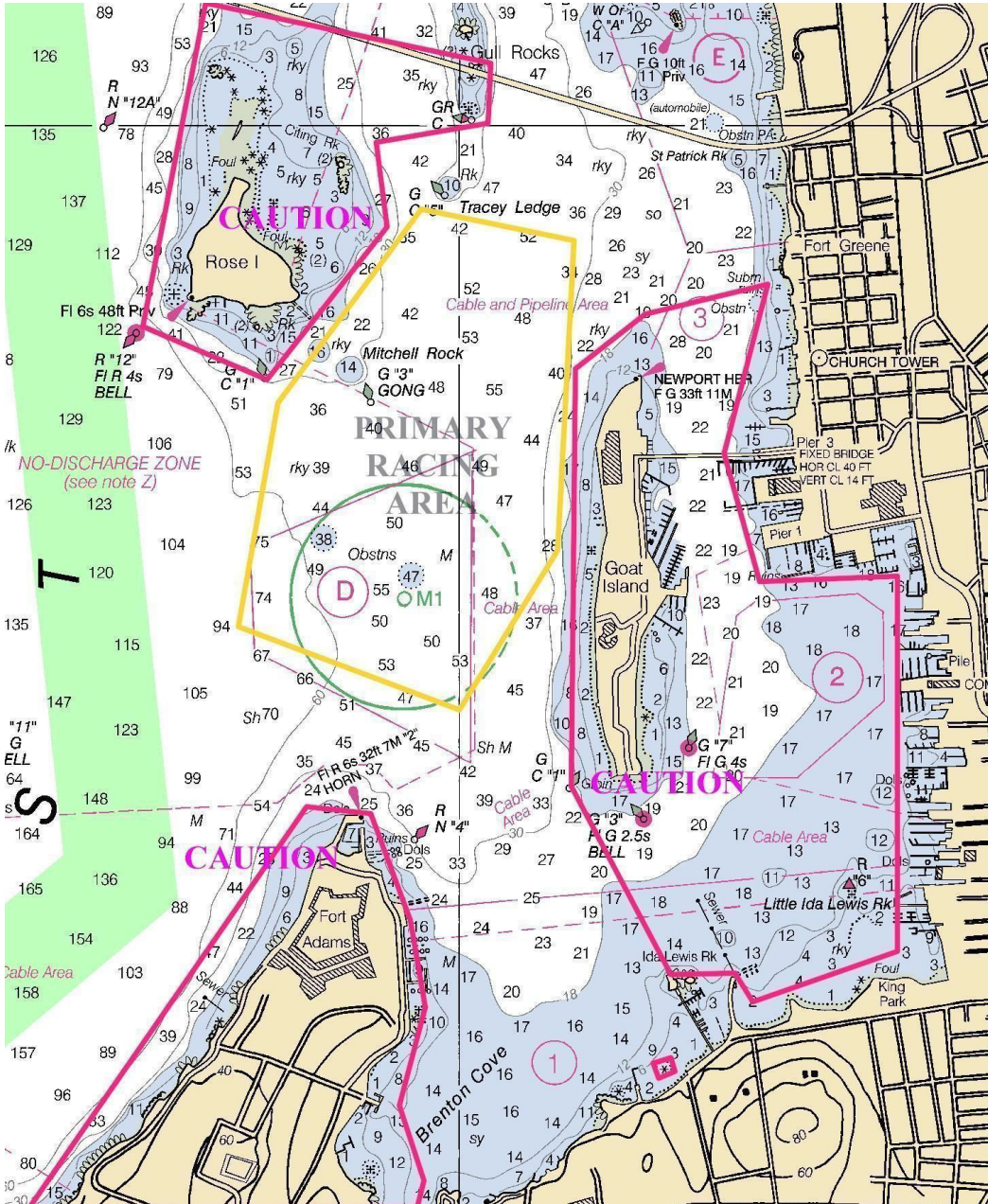
Race-Win Penalties: to be applied without a hearing

Damage Level	Round-Robin	Knock-Out Match
Level A	No penalty	No penalty
Level B	1/2 race win	3/4 race win
Level C	1 race win	1 race win

Deductions from Damage Deposits

Any deductions from damage deposits are a matter for the Organizing Authority and are not related to and do not affect any race win penalties imposed by the Umpires or protest committee.

SI ADDENDUM F – RACE AREA AND DANGER AREAS



SI ADDENDUM G – COURSE DIAGRAM

Port Box Course

