



**September 7-14, 2019
Newport, Rhode Island**

SAILING INSTRUCTIONS

The Organizing Authority (OA) is the New York Yacht Club Regatta Association, Inc. The official Rolex NYYC Invitational Cup website is <https://nyyc.org/2019-rolex-nyyc-invitational-cup>.

1 RULES

- 1.1** The regatta will be governed by the rules as defined in *The Racing Rules of Sailing* (RRS) as changed by Modified Addendum Q - Umpired Fleet Racing as approved by World Sailing (WS).
- 1.2** The prescriptions of US SAILING to *The Racing Rules of Sailing* listed in NOR Addendum A shall apply and are posted on the regatta website as Notice of Race Addendum A.
- 1.3** SI Addendum C – Handling of Boats shall apply.
- 1.4** The current IC37 Class Rules shall apply except as specifically changed in the notice of race or in the sailing instructions. The IC37 Class Rules will be posted on the regatta website as NOR Addendum B and will be updated as any new version is published by the Class.
- 1.5** IC 37 Class Rules C.2, H.2, and H3.1 do not apply.
- 1.6** The minimum equipment required to be on board shall be as stated in NOR 1.5.
- 1.7** WS Sailor Classification Code, Regulation 22 will apply. All crew members shall have a valid World Sailing Sailor Classification as a Group 1 competitor except as noted in NOR 4.11.
- 1.8** The Jury may impose suitable penalties, other than disqualification, for violations of the Class Rules, US Safety Equipment Requirements or other non-Part 2 rules. This changes RRS 64.1.
- 1.9** If there is a conflict between the notice of race and these sailing instructions, the sailing instructions shall take precedence.
- 1.10** RRS 41 is changed by adding:
 - (e) help to return a crewmember who was overboard to her boat. The boat shall then return to the location where the crewmember originally went overboard to resume racing.

2 NOTICES TO COMPETITORS

Notices, including race results, amendments and protest hearing schedules, shall be posted on the Official Notice Boards located in the courtyard of the NYYC Sailing Center at Harbour Court.

3 SIGNALS MADE ASHORE

- 3.1** Flag signals will be flown from the flagpole at Harbour Court.
- 3.2** When Pennant “AP” is displayed ashore, “one minute” is replaced with “not less than one hour” in Race Signal “AP”.
- 3.3** Signals designating the rendezvous location, as described in SI Addendum B, will be displayed at 0900 each morning of racing from the flagpole at Harbour Court. The Race Committee will endeavor to announce the location at that time over VHF Channel 72.

4 CHANGES TO SAILING INSTRUCTIONS

Any change to the sailing instructions will be posted before 0900 on the day it will take effect, except that any change to the schedule of races will be posted by 2000 on the day before it will take effect. Flag “Lima” will be flown to signify such posting.

5 SCHEDULE

- 5.1 The schedule is shown in SI Addendum D – Schedule.
- 5.2 Twelve races are planned. Up to four races may be run on any day.
- 5.3 No warning signal shall be made after 1500 on Saturday, September 14.

6 RACING AREAS

Racing will take place off Newport, RI, on Rhode Island Sound or in Narragansett Bay.

7 SAFETY, CHECK-IN AND RETIREMENT

- 7.1 Due to the nature of the regatta, upper wind limits will apply. The Race Committee will not start a race in sustained wind velocity greater than 22 knots and will abandon a race in sustained wind velocity greater than 25 knots, as determined by the Race Committee. The failure of the Race Committee to abandon a race under this sailing instruction shall not be grounds for a boat to request redress. This changes RRS 62.1(a).
- 7.2 Prior to the warning signal for the first race each day, all boats shall check-in with the Race Committee Signal Boat. The Race Committee will acknowledge by responding with the sail/bow number.
- 7.3 Boats retiring from a race or for the day are requested to inform the Race Committee on VHF Channel 72 or by calling (401) 845-9633.

8 IDENTIFICATION NUMBER

Each boat shall be identified by the two digits that are her sail number and bow number.

9 ADVERTISING, SIGNAGE AND FLAGS

- 9.1 Advertising on the boats is limited as described in NOR 3.
- 9.2 Boats shall fly the Rolex backstay flag provided at registration approximately 7’ (2 meters) above the deck:
- 9.3 Boats shall fly the “battle flags” provided at registration whenever a headsail is not set while transiting to and from the race course. In addition, boats shall fly the “battle flags” while on the mooring as directed by the OA.
- 9.4 All teams shall fly their national flag on the flagstaff, provided by the OA to each boat, on the transom while team members are onboard the boat between 0800 and sunset. The national flag shall be flown at all times while racing. The flag and staff shall be considered to be equipment in its normal position for all Part 2 rules.

10 COURSES

- 10.1 The course will be a windward/leeward course with a windward offset mark.
- 10.2 The race committee intends to set a limit mark approximately 5 to 6 boat lengths to leeward of mark 1. The limit mark is to be left to port on both the upwind and the downwind legs. The location of the limit mark or the failure of the race committee to set the limit mark shall not be grounds for a boat to request redress. This changes RRS 62.1(a).
- 10.3 Course options include Course “W” and Course “T” and are diagrammed in SI Addendum A - Courses.
- 10.4 No later than the warning signal, the Race Committee will display the course to be sailed, the approximate compass bearing, and the distance to the windward mark on a board as shown below.

W	4		<i>Course (legs for "W")</i>
2	1	0	<i>Magnetic Bearing to Mark 1</i>
1	3		<i>Distance to Mark 1</i>

10.5 Course Configuration:

- a) If course “W” is used, it will be displayed next to a number indicating the number of LEGS to be raced. For the purpose of indicating the number of legs, the distance between the windward mark and the offset marks shall not count as a leg.
- b) In Course “W”, the leeward mark will be set approximately 0.10 NM to windward of the starting line.
- c) In Course “T”, the leeward mark will be set approximately 0.5 NM to leeward of the starting/finishing line
- d) In Course “T”, except when starting or finishing, the starting/finishing line has no restrictions or requirements.
- e) Gate: It is the intention of the Race Committee to use gate marks at the end of leeward legs.
- f) Marks, including the windward offset marks, shall be rounded in order and left to port, except that a gate, when used, shall be rounded as described rule 28.1(c). In the event one of the gate marks is missing, the single remaining mark shall be rounded to port.
- g) In Course “W”, except when there is a change of course on the final leg:
 - the finish for a course with an even number of legs will be approximately 0.10 NM to leeward of the leeward mark/gate; and
 - the finish for a course with an odd number of legs will be approximately 0.10 NM to windward of the last windward mark.

11 MARKS

- 11.1** Original marks 1, 1A, 2S/2P, as shown in SI Addendum A, will be yellow inflatable tetrahedron buoys.
- 11.2** The starting mark will be either an anchored Race Committee boat displaying an orange flag or a green inflatable tetrahedron buoy.
- 11.3** The finishing mark will be a green inflatable tetrahedron buoy.
- 11.4** New marks, as provided in SI 14, will be orange inflatable tetrahedron buoys.
- 11.5** The limit mark will be a pink inflatable tetrahedron buoy. During a change of course, as provided in SI 14, the limit mark will remain pink.

12 THE START

- 12.1** The starting line will be between a staff displaying an orange flag on the Race Committee Signal Boat and either a staff displaying an orange flag on the port-end Race Committee boat or the course side of the starting mark.
- 12.2** A boat starting later than 5 minutes after her starting signal will be scored Did Not Start without a hearing. This changes RRS A4 and A5.

13 INDIVIDUAL RECALLS

The Race Committee will attempt to notify OCS boats on VHF Channel 72. The timing of such hail, the sequence of the hails, or the failure to make, or for the competitor to hear such an announcement shall not be grounds for a boat to request redress. This changes RRS 62.1(a).

14 CHANGE OF THE NEXT LEG OF THE COURSE

- 14.1** To change the next leg of the course, the Race Committee will lay a new mark (or move the finishing line) and remove the original mark as soon as practicable. When in a subsequent change a new mark is replaced, it will be replaced by an original mark.
- 14.2** The race committee may change the course by up to five degrees in bearing and/or 0.2 nm in length without a signal or change of mark color. This changes RRS 33.
- 14.3** In addition to the requirements in rule 33, the Race Committee will attempt to announce any course change on VHF Channel 72. Failure to make, or for the competitor to hear such an announcement shall not be grounds for a boat to request redress. This changes rule 62.1(a).

15 THE FINISH

- 15.1** The finishing line will be between a staff displaying a blue flag on a Race Committee Boat and the course side of the finishing mark.
- 15.2** The same Race Committee Boat may or may not start and finish each race.

16 ON THE WATER UMPIRING

- 16.1** On the water umpiring will be used in accordance with Sailing Instruction Modified Addendum Q – Umpired Fleet Racing.
- 16.2** In addition, on the water umpiring will be used:
- a) to enforce Class Rule 11. When an umpire(s) observes a breach of these class rules, the boat shall automatically be penalized one (1) point without a hearing.
 - b) The umpires shall report any breaches to the race committee in accordance with SI Q2.4.

17 PENALTY SYSTEM

- 17.1** Penalties for breaches of a rule are described in Sailing Instruction Modified Addendum Q – Umpired Fleet Racing.
- 17.2** No penalty may be taken in the zone of a rounding mark that begins, bounds, or ends the leg the boat is on or within three boat lengths of the imaginary line that joins two adjacent gate marks or that joins the offset mark and the windward mark. A boat taking a One-Turn or Two-Turns Penalty shall have the spinnaker head below the main-boom gooseneck each time she passes head to wind until she is on a close-hauled course in the process of taking her penalty.
- 17.3** A boat that plans to take a penalty in accordance with SI Q2.2, may clarify her intention to do so by:
- a) displaying a yellow flag supplied by the OA; or
 - b) making an arm signal waving a hand over the head; or
 - c) making a verbal hail,
- such that it is clearly evident to both the umpires and protesting boat that the protested boat intends to take a penalty, then getting well clear of other boats as soon after the incident as possible before taking the penalty.

18 REVOKE OF INVITATION

Participation in the regatta is by invitation. When the jury finds in a hearing that a boat or team's competitor or support person has broken one or more rules in an incident afloat or ashore where there was either; 1) serious damage caused by reckless sailing or poor seamanship, 2) poor sportsmanship, or 3) misconduct as described in rule 69.1(b), it shall make a report to the OA who may revoke that team's invitation and excuse the team from the regatta. The OA may also decide to take such action for this kind of conduct without such a report.

19 TIME LIMIT

- 19.1** The time limit for the first boat to sail the course and finish is three hours. If no boat has passed the first mark within 45 minutes, the race will be abandoned.
- 19.2** Boats failing to finish within 30 minutes after the first boat sails the course and finishes will be scored as described in SI 21.3 without a hearing. This changes RRS 35, A4 and A5.

20 PROTESTS AND REQUESTS FOR REDRESS

- 20.1** Red flags will be provided by the OA to each boat to be displayed when protesting another boat in accordance with SI Q2.1.
- 20.2** Protests and Requests for Redress will be heard in accordance with SI Q5.
- 20.3** Protests and requests for redress need not be in writing, but forms will be available from the Sailing Office in the NYYC Sailing Center should a competitor wish to complete one for hearings held ashore.
- 20.4** The Jury will attempt to post a list of hearings on the Official Notice Board no later than 30 minutes after the Race Committee Signal Boat has docked.
- 20.5** If protest hearings are held ashore, they will take place in the Jury Room at the NYYC Sailing Center. The Jury will attempt to hear protests in the order of receipt. Representatives of boats who are parties to a hearing shall remain on call in the vicinity of the Jury Room.
- 20.6** Video and/or photographs taken from any support, spectator, and/or coach boat shall not be presented as evidence at protest hearings by a competitor or a witness. The Jury may present, as evidence, publicly available photos or video. Data from any tracking system, if used, may only be presented as evidence by the Jury. This changes RRS 63.6.
- 20.7** Breaches of SIs 7, 9, 23 and Class Rule C.11, will not be grounds for a protest by a boat.

20.8 When the Jury finds that a boat that is a party to a protest hearing has broken a rule, and as a result has caused catastrophic damage to the other boat involved in the incident (defined as a boat being unable to race the following day), in addition to other penalties, the Jury may require that the team at fault give their boat to the team with the damaged boat as a replacement until the damaged boat has been fully repaired.

20.9 Decisions of the Jury will be final as provided in RRS 70.5.

21 SCORING

21.1 A boat's series score will be the total of all her race scores. No score will be excluded. This changes rule A2.

21.2 One race is required to be completed to constitute a series.

21.3 Boats that have started and fail to finish within the time limit described in SI 19.2 shall, without a hearing, be scored by the Race Committee with points equal to the number of boats that have sailed the course and finished within the time limit, plus two, but shall not receive a score worse than the number of boats entered plus one. This changes RRS A4.1, A4.2, and A5.

22 REPLACEMENT OF CREW OR EQUIPMENT

22.1 Substitution of competitors between racing days is not permitted without prior written approval of the OA. A crew substitution form will be available in the Sailing Office. Except as may be permitted by the OA in the case of injury or illness, the eligibility requirements of the entire crew as defined in NOR 4 must be maintained when any substitution is made.

22.2 Substitutions of competitors between races on a race day is only permitted in the case of an injury or illness and with verbal approval of the Jury. Except as may be permitted by the Jury for the remainder of racing on that day, the eligibility requirements of the entire crew as defined in NOR 4 must be maintained when any substitution is made.

22.3 Substitution or repair of damaged or lost equipment will not be allowed unless authorized by the Technical Committee of the OA. Procedures are described in SI Addendum C - Handling of Boats.

23 EQUIPMENT AND MEASUREMENT CHECKS

A boat or equipment may be inspected at any time for compliance with the Class Rules and sailing instructions. On the water, a boat may be instructed by the Race Committee or a member of the Technical Committee to proceed immediately to a designated area for inspection by the OA.

24 SUPPORT BOATS

24.1 Other than cheering, individual support or coach boats shall not have contact of any nature including radio, telephone, text messaging, email or other computer/smartphone technology, vocal signal, visual signaling of any kind, or the transfer of equipment, persons or victuals, with a boat from the time the boat leaves the dock or mooring each day until the boat has finished the final race of the day, except with the specific permission of the OA or Jury. This changes IMIC37CA Rule H.4.

24.2 Individual support or coach boats, defined as any boat that is under the direction or control of a person gathering information or giving material support for the benefit of a particular competitor(s) either on the water or off, shall stay outside the racing area, as defined on the Course Marshal Directions, and at least 100 meters from any boat that is racing, except at a mark rounding or the finish where they shall stay at least 50 meters from the mark or finish line.

24.3 Individual support or coach boats shall register with the OA and will be issued a flag that shall be clearly displayed at all times in the race area.

25 HAUL-OUT & BOTTOM CLEANING RESTRICTIONS

Boats shall not be hauled without specific permission from the OA and/or the Jury. The OA will provide bottom cleaning for all boats. Competitors shall not clean, sand or fair the bottom or foils of their boat, or so cause or arrange. Swimming for the purposes of banding or aligning the propeller is prohibited.

26 PRIZES

- 26.1** Prizes will be awarded to the top three teams in the overall standings.
- 26.2** The winning Yacht Club's or Sailing Organization's name will be engraved on the NYYC Invitational Cup, which shall remain in the custody of New York Yacht Club. A replica traveling trophy will be awarded to the winning team and shall be returned to New York Yacht Club no later than one month prior to the subsequent Invitational Cup, or as agreed with the OA.
- 26.3** The Resolute Trophy will be awarded to the top non-North American team.
- 26.4** The Corinthian Spirit Award will be voted on by the competitors and OA and presented to the team that best exhibits the Corinthian spirit both on and off the water. Corinthian spirit may include graciousness, camaraderie, helpfulness, and contributing positively to the atmosphere of the event.
- 26.5** Prizes will be awarded daily to the top three teams in each race.
- 26.6** Participation awards will be presented to each team.
- 26.7** Additional prizes may be awarded at the discretion of the OA.

27 DISCLAIMER OF LIABILITY AND MEDIA WAIVER

- 27.1** Liability & Media Waivers: Each competitor shall complete the online Liability & Media Waiver available on the NYYC Invitational Cup website and submit the waiver prior to the close of registration.
- 27.2** Competitors participate in this regatta entirely at their own risk. See RRS 4, Decision to Race. The Organizing Authority, New York Yacht Club, Sponsors and affiliated companies will not accept any liability for material damage or personal injury or death sustained in conjunction with or prior to, during, or after the regatta. Attention is also drawn to US Safety Equipment Requirement 1.2 Overall: Responsibility.

28 INSURANCE & DAMAGE DEPOSIT

Each Yacht Club or Sailing Organization shall meet the damage deposit requirement in NOR 5.5.

29 NOTES

- 29.1** Competitors are reminded that Narragansett Bay and its approaches are considered restricted channels for commercial traffic and vessels in the navigation channel restricted in their ability to maneuver. Competitors must comply with the government right-of-way rules when in proximity to commercial or privileged marine traffic.
- 29.2** All times herein are Eastern Daylight times. Bearings are in degrees magnetic and are approximate. Distances used herein are expressed in nautical miles (when not otherwise defined) and are approximate.
- 29.3** For further information, please visit the official NYYC Invitational Cup website or contact the Event Chairman or the New York Yacht Club Sailing Office.

Robbie Benjamin, Event Chair
Tel: +1 401-556-0337
Email: robbie.m.benjamin@gmail.com

Lynn Lynch, Sailing Director
Tel: +1 401-845-9633
Email: sailingoffice@nyyc.org

© Copyright New York Yacht Club 2019. All Rights Reserved.

New York Yacht Club, NYYC, the Club burgee and other logos and marks are trademarks and Registered Trademarks in the United States and other countries. All Rights Reserved. All trademarks of the New York Yacht Club including the Burgee, Name, the New York Yacht Club Invitational Cup logos and marks, and event images may not be used by any club or individual without the permission of the club.

NEW YORK YACHT CLUB OFFICERS

William P. Ketcham, Commodore
Christopher J. Culver, Vice Commodore
Paul Zabetakis, Rear Commodore
Peter J. Cummiskey, Secretary
John C.R. Hele, Treasurer

ORGANIZING COMMITTEE

Robbie Benjamin, Event Chair
Art Santry, Chair Sailing Committee

TECHNICAL COMMITTEE

Mike Drake
Aubie Van Beuren
Shaun Kilbride

JURY/UMPIRES

Lynne Beale, IJ (CAN), Chair
Christine Accettella (USA)
Miguel Allen, IJ/IU (POR)
Alen Baser, IJ/IU (GBR)
David De Vries, IJ (AHO)
Nelson Ihla, IJ/IU (BRA)
Elliot Levy, IJ (VEN)
Peter Wilson (USA)
Steven Wolff, IU (USA)

RACE COMMITTEE

Clare Harrington, Principal Race Officer
Lynn Lynch, DRO
Karin Nye, DRO
Ellyn Osmond
Catherine L. Peacock
Katrina Hele
Ingrid Flynn
Juliana Wilson
Patricia Ann O'Donnell
James C. (Ace) Bailey
Forrest Williams
Eric P. Richards
Anthony S. Weiner
David K. Elwell, Jr.
Thomas K. Flynn
Samuel W. Wakeman
John L. (Tinker) Myles, Jr.
Johanna M. Moffitt
Richard R. Gumpert
John Vincze

ADDENDUM A – COURSES

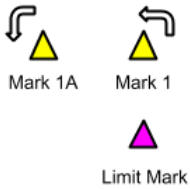
Course “W”

- W3** Start–1–1A–2S/2P–Finish (upwind)
- W4** Start–1–1A–2S/2P–1–1A–Finish (downwind)
- W5** Start–1–1A–2S/2P–1–1A–2S/2P–Finish (upwind)
- W6** Start–1–1A–2S/2P–1–1A–2S/2P–1–1A–Finish (downwind)

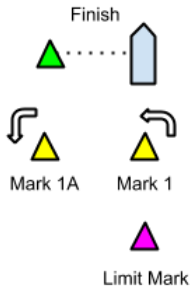
Course “T”

- T** Start–1–1A–2S/2P–1–1A–2S/2P–Finish

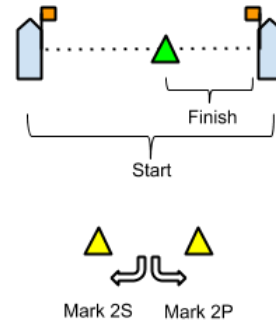
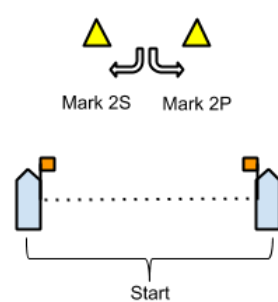
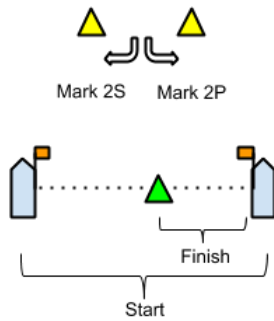
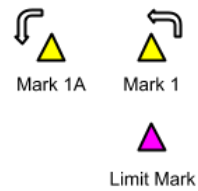
COURSE W - Even # Legs



COURSE W - Odd # Legs



COURSE T



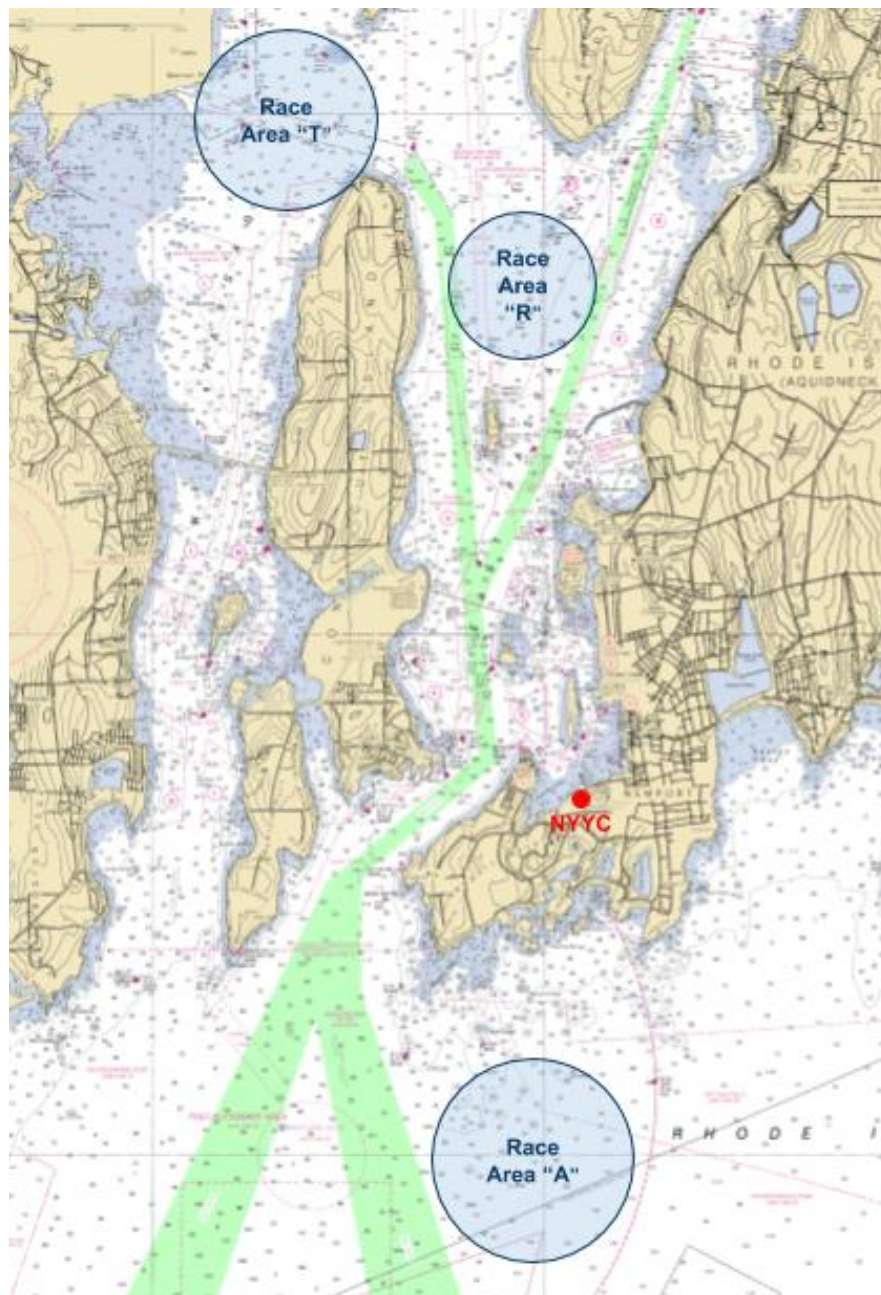
ADDENDUM B – RENDEZVOUS LOCATIONS

Rhode Island Sound:

- Area “A” – in the vicinity of 160° for 1.2 NM from R “2” QR Whistle marking Brenton Point

North of Newport Bridge:

- Area “R” – in the vicinity of 200° for 0.5 NM from Halfway Rock
- Area “T” – in the vicinity of G “7” QG off Quonset Point



ADDENDUM C – HANDLING OF BOATS

1 BOATS

- 1.1** All boats shall be provided by the Organizing Authority.
- 1.2** Each boat shall be kept on the mooring assigned by the Organizing Authority unless otherwise directed.
- 1.3** All boats shall be standardized by the Technical Committee of the Organizing Authority to ensure as level a playing field as possible (see Form TC-01 - Boat Acceptance Checklist). Standardized settings include, but are not limited to, headstay length, mast base plate position, mast jack tension, rig tune, and fuel tank level. Boats shall be sailed as set up by the OA. No seals shall be broken or opened. Any adjustment by competitors to the standardized settings is prohibited
- 1.4** Competitors wishing to change any standardized rig tune setting shall request the change be made by the Technical Committee by submitting their request in writing (see Form TC-02 – Request for Rig Tuning Adjustment). If on the water, competitors can contact the Technical Committee on VHF Channel 72. The OA has the final authority in deciding whether an adjustment will be made.
- 1.5** While all reasonable steps will have been taken to equalize the boats, variations will not be grounds for a boat to request redress. This changes RRS 62.1(a).
- 1.6** Boats are provided for use in proper operation and competitive condition. Deficiencies noted by the team using the boat shall be brought to the attention of the Technical Committee during the check-out period (September 7-8).
- 1.7** After the check-out, the boat's condition shall be the sole responsibility of the team using the boat. Damage other than normal "wear and tear" (breakage of equipment while being used properly) shall be repaired by the OA and paid for by the team either by Credit Card or deducted from the original damage deposit (see Form TC-03 - Gear Replacement Form).
- 1.8** The sail inventory provided by the OA shall be the only sails permitted on the boats at any time. No other sails shall be used during practice or racing.
- 1.9** All gear and equipment provided with the boat shall remain onboard and remain stored in the location found unless actively in use.
- 1.10** While in the race course area, a boat needing to contact the Technical Committee to request a change or repair shall fly the orange flag provided by the OA as soon as possible, proceed immediately to the Technical "Service Area" to the left of the start/finish line after finishing and hail the Technical Committee on VHF Channel 72. Failure of the Technical Committee to respond or make a change or repair in time for a subsequent race shall not be grounds for a boat to request redress. This changes RRS 62.1(a).

2 PERMITTED EQUIPMENT AND ACTIONS

- 2.1** Taking on board the following equipment:
 - a) basic hand tools. (Note that the Supplied Equipment includes a basic tool kit)
 - b) adhesive tape or Velcro tape but not duct tape
 - c) line (elastic or otherwise of 4 mm diameter or less)
 - d) pencils and non-permanent marking pens
 - e) tell-tale material
 - f) watch, timers, hand held compass, hand held electronic wind instrument and Velocitek ProStart (or similar IC37 Class Rules approved unit)
 - g) Hand held VHF
 - h) Soft-shackles, cotter pins/ring dings and clevis pins
 - i) A bosun's chair.
 - j) signal flags.
 - k) self-adhesive sail repair tape/material.

- 2.2** Using the items in NOR C2.1 to:
- a) attach tell tales
 - b) prevent fouling of lines, sails and sheets, or securing the spinnaker halyard
 - c) prevent sails being damaged or falling overboard
 - d) mark control settings
 - e) make minor repairs and permitted adjustments
 - f) make signals as per Regatta Sailing Instructions
 - g) Go aloft only to inspect the mast or rigging, or to make a necessary on-the-water repair while racing.
- 2.3** The use of competitor-provided electronic devices that provide tactical or strategic information, such as phone/tablet applications, Velocitek, or other such device, will be permitted, but may not be connected (wired or wirelessly) to any instrument on the boat while racing. Gathering of data to review after coming ashore each day is permitted.

3 PROHIBITED EQUIPMENT AND ACTIONS

- 3.1** The use of duct tape, permanent markers, additional winch handles, additional sheets or running rigging, additional sail bags or turtles, or the provision of equipment not permitted in NOR Addendum C or SI C.2 is prohibited.
- 3.2** Cell phone use is permitted when not racing, but shall not be used to obtain any information not freely available to all competitors.
- 3.3** Taking supplied equipment off the boat or moving equipment from its stored position except when it is in use is prohibited.
- 3.4** Swimming or diving for the purposes of banding or aligning the propeller, or cleaning the bottom or foils in any way is prohibited. The OA has contracted for the bottoms to be cleaned during the regatta.
- 3.5** Running the engine at higher than 2800 RPMs while transiting to or from the race area is prohibited.
- 3.6** Except in an emergency or in order to prevent damage or injury, or when directed by the OA, the following are prohibited:
- a) adding, omitting or altering any of the equipment supplied;
 - b) using any equipment for a purpose other than that intended;
 - c) replacing any equipment without the sanction of the OA;
 - d) sailing the boat in a manner that it is reasonable to predict would result in significant further damage;
 - e) boarding a boat without prior permission;
 - f) taking a boat from its mooring without having paid the required damage deposit, or on race days, while “AP” is displayed ashore;
 - g) Adjusting the tune of the rig in any way other than by use of the Owner supplied mast base shims, including, but not limited to:
 - Moving the position of the mast base plate.
 - Adjusting the headstay turnbuckle.
 - Adjusting the mast shroud (Vs or Ds) turnbuckles.
 - Moving or adjusting the mast chocks at the partners.
 - Adjusting the spacers on the boom gooseneck.
 - Adding any shims at the mast base other than the Owner supplied mast base shims.
 - Using more than the maximum (40mm) amount of the Owner supplied mast base shims.
 - Using less than the minimum (22mm) amount of the Owner supplied mast base shims.
 - Exceeding the prescribed maximum mast jack pressure (5200psi) when adding or removing mast base shims.
- 3.7** The use of any halyard or other mechanical means to pull the top of the mast forward.
- 3.8** The use of a dehumidifier or similar drying device.

4 MANDATORY ITEMS AND ACTIONS

The following are mandatory:

- 4.1** Upon acceptance of the boat, the team shall review Form TC-01 and inspect the boat for any interior or exterior damage. Items not identified on TC-01 shall be so noted by the team on TC-01. A signed TC-01 shall be submitted to the Technical Committee prior to the boat leaving the mooring field.
- 4.2** Upon completion of the event, the team shall complete and sign Form TC-05 and submit it to the Technical Committee representative, even if no damage or loss is recorded. Reports shall include any evidence of matters that could cause damage or disadvantage to the boat.
- 4.3** At the end of each sailing day, each team shall:
 - a) fold or roll, bag and place the sails as directed
 - b) leave the boat in the same state of cleanliness as when first boarded that day.
 - c) Ensure that the valve on the mast jack pump is open.
 - d) Ease backstay tension to a soft but not loose setting.
 - e) Attach the main halyard to the end of the boom to use as a topping lift and adjust along with vang and mainsheet tensions to minimize boom movement.
 - f) Secure all halyards to prevent slapping.
 - g) Secure the tiller on centerline.
 - h) submit to the Sailing Office a completed Form TC-04, even if no damage has occurred or there is no evidence of matters that could have caused damage or disadvantage to the boat. The Race Committee shall protest any boat failing to submit Form TC-04. The penalty may be either place penalties or disqualification at the discretion of the Jury.
- 4.4** At the end of the final day, each team shall clean the boat (cabin and decks), and remove all trash, tape and marks.
- 4.5** Compliance with any regulations, including speed restrictions and navigation marks, while leaving or returning to the mooring.
- 4.6** Infringement of items 4.2 and 4.3 of this Addendum will be considered as damage and the cost of rectification will be deducted from the damage deposit.

Technical Committee Forms *(will be handed out at registration)*

- FORM TC-01 Boat Acceptance Checklist
- FORM TC-02 Request for Rig Tune
- FORM TC-03 Gear Breakage
- FORM TC-04 Daily Damage Report
- FORM TC-05 Boat Return Checklist
- FORM TC-06 Sail Damage Card

ADDENDUM D – SCHEDULE

Saturday, September 7	0900-1100 0900-1200 1200-1600 1600-1800	Registration – Sailing Center IC37 Check out following registration IC37s available for practice following check out Late Registration – Sailing Center
Sunday, September 8	0900-1000 0900-1000 1200-1500 1600-1730 1730-1830 1800	Late Registration (if needed) – Sailing Center IC37 Protocol, Safety & Sail Briefing – Arcadia Room (mandatory for helmsmen, tacticians and mainsail trimmers) Mandatory Practice Starts and Racing Practice Day Video Weather & Local Knowledge by Ken Read – Arcadia Room (mandatory for helmsmen, tacticians and mainsail trimmers) Happy Hour hosted by North Sails Classification Protest Time Limit
Monday, September 9	0900 1200-1500 1600-1800 1730-1800 1800-1830 1830-2000	IC37s available for practice Mandatory Practice Starts and Racing Hospitality Center – Lower Lawn Meeting with Umpires – Arcadia Room (mandatory for helmsmen and tacticians) Captains Meeting – Arcadia Room (mandatory for helmsmen, tacticians, coaches and spectator boat captains) Opening Ceremony & Reception – Marquee (<i>Jacket & Tie</i>)
Tuesday, September 10	0830 1100 1600-1800 1800-2000	Morning Competitor Meeting Race Day 1 – First Warning Signal Hospitality Center – Lower Lawn Evening hosted by RNZYS and daily Awards - Marquee
Wednesday, September 11	0830 1100 1600-2000 1800	Morning Competitor Meeting Race Day 2 – First Warning Signal Hospitality Center – Lower Lawn Daily Awards at the Hospitality Center
Thursday, September 12	0830 1100 1600-1830 1830-2130	Morning Competitor Meeting Race Day 3 – First Warning Signal Hospitality Center – Lower Lawn NYYC Lobster Bake and Daily Awards - Marquee (<i>Smart Casual</i>)
Friday, September 13	0830 1100 1600-2000 1800 1830-1930	Morning Competitor Meeting Race Day 4 – First Warning Signal Hospitality Center – Lower Lawn Daily Awards at the Hospitality Center Commodore’s Reception (<i>Jacket & Tie, by invitation only</i>)
Saturday, September 14	0800 0900 1100 1800 1900-2300	Morning Competitor Meeting Parade of Nations – Newport Harbor Race Day 5 – First Warning Signal Awards Cocktails – Hospitality Center (<i>Jacket & Tie</i>) Rolex Awards Dinner – Marquee (<i>Jacket & Tie</i>)

MODIFIED ADDENDUM Q – UMPIRED FLEET RACING

Under rule 86.2 and Regulation 28.1.3, World Sailing has approved the use of these sailing instructions as an addendum to the sailing instructions in the Olympic Sailing Competition and World Sailing 200-Point and 100-Point Events from January 1, 2019 and until changed, for umpired fleet racing in the last race(s) of each series for the Olympic classes, Kiteboards, 2.4 Norlin OD and Hanse 303 classes. For these events, no changes to the addendum are permitted unless specifically authorised.

This addendum applies to all medal races and all pre-race or post-race activities related to them. **It is amended with approval of US Sailing to apply to a series of fleet races.**

Version: January 1, 2019 **Amended:** January 15, 2019

Marginal marks indicate important changes from recent versions.

These sailing instructions change the definition Proper Course, and rules 20, 28.2, 44, 60, 61, 62, 63, 64, 65, 66, **and 70. B5 and F5.**

Q1 CHANGES TO RACING RULES

Additional changes to rules are made in instructions Q2, Q3, Q4, and Q5.

Q1.1 Changes to the Definitions and the Rules of Part 2

- (a) Add to the definition Proper Course: ‘A boat taking a penalty or manoeuvring to take a penalty is not sailing a *proper course*.’
- (b) When rule 20 applies, the following arm signals are required in addition to the hails:
 - (1) for ‘Room to tack’, repeatedly and clearly pointing to windward; and
 - (2) for ‘You tack’, repeatedly and clearly pointing at the other boat and waving the arm to windward.

~~Instruction Q1.1(b) does not apply to boards, kiteboards, 2.4 Norlin OD and Hanse 303 classes.~~

Q1.2 Changes to Rules Involving Protests, Requests for Redress, Penalties and Exoneration

- (a) The first sentence of rule 44.1 is replaced with: ‘A boat may take a One-Turn Penalty in accordance with rule 44.2 when, in an incident while *racing*, she may have broken one or more of the rules of Part 2 (except rule 14 when she has caused damage or injury), rule 31 or rule 42.’
- ~~(b) For boards, the One-Turn Penalty is one 360o turn with no requirement for a tack or a gybe.~~
- (c) Rule 60.1 is replaced with ‘A boat may protest another boat or request redress provided she complies with instructions Q2.1 and Q2.4.’
- (d) The third sentence of rule 61.1(a) and all of rule 61.1(a)(2) are deleted. ~~Rule B5 is deleted.~~
- ~~(e) Rules 62.1(a), (b) and (d) are deleted. In a race where this addendum applies, there shall be no scoring adjustments for redress given under any of these rules for a previous race.~~
- (f) The three sentences of rule 64.1 are replaced with: ‘When the protest committee decides that a boat that is a *party* to a protest hearing has broken a *rule*, it may impose penalties other than disqualification, and may make any other scoring arrangement it decides is equitable. If a boat has broken a *rule* when not *racing*, the protest committee shall decide whether to apply any penalty to the race sailed nearest in time to that of the incident or make some other arrangement.’
- (g) Rule 64.1(a) is changed so that the provision for exonerating a boat may be applied by the umpires without a hearing, and it takes precedence over any conflicting instruction of this addendum.
- (h) Rule 64.4(b) is replaced with: ‘The protest committee may also penalize a boat that is a *party* to a hearing under rule 60.3(d) or rule 69 for a breach of a *rule* by a *support person* by changing the boat’s score in a single race, up to and including DSQ.’

~~(i) Rules P1 to P4 shall not apply.~~

Q2 PROTESTS AND REQUESTS FOR REDRESS BY BOATS

- Q2.1** While racing, a boat may protest another boat under a rule of Part 2 (except rule 14) or under rule 31 or 42; however, a boat may only protest under a rule of Part 2 for an incident in which she was involved. To do so she shall hail 'Protest' and conspicuously display a red flag at the first reasonable opportunity for each. She shall remove the flag before, or at the first reasonable opportunity after a boat involved in the incident has taken a penalty voluntarily or after an umpire's decision. ~~However, a board, kiteboard, 2.4 Norlin OD or Hanse 303 need not display a red flag.~~
- Q2.2** A boat that protests as provided in instruction Q2.1 is not entitled to a hearing. Instead, a boat involved in the incident may acknowledge breaking a rule by taking a One-Turn Penalty in accordance with rule 44.2. An umpire may penalize any boat that broke a rule and was not exonerated, unless the boat took a voluntary penalty.
- Q2.3** At the finishing line, the race committee will inform the competitors about each boat's finishing place or scoring abbreviation. After this has been done, the race committee will promptly display flag B with one sound. Flag B will be displayed for at least two minutes and then removed with one sound. If the race committee changes the scoring information provided at the finishing line while flag B is displayed, it will display flag L with one sound. Flag B will continue to be displayed for at least two minutes after any changes are made.
- Q2.4** A boat intending to
- (a) protest another boat under a rule other than instruction Q3.2 or rule 28, or a rule listed in instruction Q2.1,
 - (b) protest another boat under rule 14 if there was contact that caused damage or injury, or
 - (c) request redress
- shall hail the race committee before or during the display of flag B. The same time limit applies to protests under instruction Q5.5. The protest committee shall extend the time limit if there is good reason to do so.
- Q2.5** The race committee will promptly inform the protest committee about any protests or requests for redress made under instruction Q2.4.

Q3 UMPIRE SIGNALS AND IMPOSED PENALTIES

- Q3.1** An umpire will signal a decision as follows:
- (a) A green and white flag with one long sound means 'No penalty.'
 - (b) A red flag with one long sound means 'A penalty is imposed or remains outstanding.' The umpire will hail or signal to identify each such boat.
 - (c) A black flag with one long sound means 'A boat is disqualified.' The umpire will hail or signal to identify the boat disqualified.
- Q3.2** (a) A boat penalized under instruction Q3.1(b) shall take a **Two-Turns** Penalty in accordance with rule 44.2.
- (b) A boat disqualified under instruction Q3.1(c) shall promptly leave the course area.

Q4 PENALTIES AND PROTESTS INITIATED BY AN UMPIRE; ROUNDING OR PASSING MARKS

- Q4.1** When a boat
- (a) breaks rule 31 and does not take a penalty,
 - (b) breaks rule 42,
 - (c) gains an advantage despite taking a penalty,
 - ~~(d) deliberately breaks a rule,~~
 - (e) commits a breach of sportsmanship, or

(f) fails to comply with instruction Q3.2 or to take a penalty when required to do so by an umpire, an umpire may penalize her without a protest by another boat. **A boat penalized by an umpire shall take a Two-Turns Penalty except that when an umpire hails a number of turns, that boat shall take that number of One-Turn Penalties,** each signaled in accordance with instruction Q3.1(b), or disqualify her under instruction Q3.1(c), or report the incident to the protest committee for further action. If a boat is penalized under instruction Q4.1(f) for not taking a penalty or taking a penalty incorrectly, the original penalty is cancelled.

Q4.2 The last sentence of rule 28.2 is changed to ‘She may correct any errors to comply with this rule, provided she has not rounded the next *mark* or *finished*.’ A boat that does not correct any such error shall be disqualified under instruction Q3.1(c).

Q4.3 An umpire who decides, based on his own observation or a report received from any source, that a boat may have broken a rule, other than instruction Q3.2 or rule 28 or a rule listed in instruction Q2.1, may inform the protest committee for its action under rule 60.3. However, he will not inform the protest committee of an alleged breach of rule 14 unless there is damage or injury.

Q5 PROTESTS; REQUESTS FOR REDRESS OR REOPENING; APPEALS; OTHER PROCEEDINGS

Q5.1 No proceedings of any kind may be taken in relation to any action or non-action by an umpire.

Q5.2 A boat may not base an appeal on an alleged improper action, omission or decision of the umpires. A party to a hearing may not base an appeal on the decision **or procedures** of the protest committee. In rule 66 the third sentence is changed to ‘A *party* to the hearing may not ask for a reopening.’

Q5.3

- (a) Protests and requests for redress need not be in writing.
- (b) The protest committee may inform the protestee and schedule the hearing in any way it considers appropriate and may communicate this orally.
- (c) The protest committee may take evidence and conduct the hearing in any way it considers appropriate and may communicate its decision orally.
- (d) If the protest committee decides that a breach of a rule has had no effect on the outcome of the race, it may impose a penalty of points or fraction of points or make another arrangement it decides is equitable, which may be to impose no penalty.
- (e) If the protest committee penalizes a boat in accordance with instruction Q5.3 or if a standard penalty is applied, all other boats will be informed about the change of the penalized boat’s score.

Q5.4 The race committee will not protest a boat.

Q5.5 The protest committee may protest a boat under rule 60.3. However, it will not protest a boat for breaking instruction Q3.2 or rule 28, a rule listed in instruction Q2.1, or rule 14 unless there is damage or injury.

Q5.6 The technical committee will only protest a boat under rule 60.4 when it decides that a boat or personal equipment does not comply with the class rules, rule 43, or the rules in the equipment regulations of the event, if such exist. In such a case, the technical committee shall protest.