



NYYC One-Design Regatta

**Newport, Rhode Island
June 2-4, 2017**

SAILING INSTRUCTIONS

1 ORGANIZING AUTHORITY

The Organizing Authority (OA) is the New York Yacht Club Regatta Association.

2 RULES

- 2.1 The regatta will be governed by the 'rules' as defined in the current Racing Rules of Sailing (RRS).
- 2.2 Etchells Class: The rules and regulations of the International Etchells Class Association will apply except as modified by these sailing instructions. This regatta is an Etchells Class B sanctioned event under Appendix A of the International Etchells Class Association (IECA) Rules.
- 2.3 Melges 20 Class: The rules of the Melges 20 Class will apply.
- 2.4 J/70 Class: The rules of the J/70 Class will apply.
- 2.5 If there is a conflict between languages, the English text will take precedence.
- 2.6 If there is a conflict between rules or regulations, other than RRS, the sailing instructions will prevail. This changes RRS 63.7.
- 2.7 All competing boats shall carry a handheld VHF radio for safety purposes and race committee communication.

3 NOTICES TO COMPETITORS

Notices to competitors will be posted on the Official Notice Board located at the New York Yacht Club Sailing Center and may also be posted on the event website at www.nyyc.org.

4 CHANGES TO SAILING INSTRUCTIONS

Any change to the sailing instructions will be posted before 0900 hours on the day it will take effect, except that any change to the schedule of races will be posted by 2000 hours on the day before it will take effect.

5 SIGNALS MADE ASHORE

- 5.1 Flag signals will be flown from the flagpole at Harbour Court and may be duplicated in the vicinity of the Alofsin Piers at Sail Newport.
- 5.2 When flag AP is displayed ashore, '1 minute' is replaced with 'not less than 90 minutes' in race signal AP. This changes RRS Race Signals.
- 5.3 When flag Y is displayed ashore, RRS 40 applies at all times while afloat. This changes RRS Part 4 Preamble.

6 SCHEDULE OF EVENTS

- | | | | |
|-----|------------------|--------------|--|
| 6.1 | Thursday, June 1 | 1200-1800 | Etchells Registration/measurement |
| | | 1800 | All Etchells must be in the water |
| | Friday, June 2 | 1100 | Etchells: Warning signal for first race. Additional race(s) to follow ASAP. |
| | | 1830 | Etchells BBQ at New York Yacht Club (smart casual attire) |
| | Saturday, June 3 | 1100 | All Classes: Warning signal for first race. Additional race(s) to follow ASAP |
| | Sunday, June 4 | 1100 | All Classes: Warning signal for first race. Additional race(s) to follow ASAP. |
| | | After Racing | Prize Giving |
- 6.2 For the Etchells class, eight races are scheduled. The race committee may run fewer races at its discretion.
- 6.3 When more than one race will be held on the same day, the warning signal for each succeeding race will be made as soon as practicable. To alert boats that another race will begin soon, the course signals will be displayed with one sound signal at least 5 minutes before the warning signal for the next race.
- 6.4 For all classes, on the final day of the regatta, the initial warning signal for the final race of the first class will not be made after 1400 hours. The warning signal for a start following one or more general recalls, or for subsequent classes may be made after 1400.

7 CLASS FLAG

Class flags will be as follows:

- | | |
|------------|--------------------------------------|
| Etchells: | white flag with blue class insignia |
| Melges 20: | white flat with black class insignia |
| J/70: | white flat with blue class insignia |

8 RACING AREA

- 8.1 Racing will take place on the waters of Rhode Island Sound (Area A), south of West Passage (Area B), or Narragansett Bay (Area R). The racing areas are shown in Attachment A.
- 8.2 A flag designating the rendezvous area will be displayed at 0900 and the race committee will endeavor to announce the location at that time on VHF Channel 72.
- 8.3 All classes will sail on the same circle.

9 THE COURSES

- 9.1 The diagrams in Attachment B show the courses, including the approximate angles between the legs, the order in which marks are to be passed and the side on which each mark is to be left.
- 9.2 No later than the warning signal, the course to be sailed will be designated by displaying numeral pennant 1 or 2 from the race committee vessel.
- 9.3 No later than the warning signal, the race committee will display the approximate compass bearing of the first leg.
- 9.4 Mark 3S/3P are a gate. In the event one of the gate marks is missing, the single remaining mark shall be rounded to port.
- 9.5 Mark 2 is a windward offset mark adjacent to the windward mark.

- 9.6 The race committee may set a long windward mark in addition to the short windward mark.
- 9.6.1 The distance displayed will be to the short windward mark.
 - 9.6.2 The long windward mark will be on the same bearing at a distance of .50 NM beyond the short windward mark.
 - 9.6.3 There will be an offset mark at the long windward mark.
 - 9.6.4 If flag “D” is displayed below the course signals, that class will use the LONG windward mark for each weather leg in that race. If flag “D” is not displayed below the course signals, that class will use the short windward mark for each weather leg in that race.

10 MARKS

- 10.1 Marks 1, 2, 3P and 3S will be orange inflatable marks. If a long windward mark is used, it will be an orange inflatable mark.
- 10.2 New marks 1, 2, 3P and 3S, as provided in instruction 12, will be yellow inflatable marks.
- 10.3 The starting mark will be a yellow inflatable mark.
- 10.4 The finishing mark will be a green inflatable mark.

11 THE START

- 11.1 The starting line will be between a staff displaying an orange flag on the starboard end signal boat and a yellow inflatable mark OR a staff displaying an orange flag on the port end signal boat.
- 11.2 A boat starting later than 10 minutes after the starting signal will be scored DNS. This changes RRS 63.1, A4.1 and A.5.
- 11.3 As a courtesy, the race committee will attempt to notify OCS or BFD boats by radio on VHF Channel 72. Failure of equipment, failure to hear a hail, delay in hailing or the order in which hails are given will not be grounds for redress. This changes RRS 62.1(a).
- 11.4 The intended starting order for the first race of Saturday and the first race of Sunday shall be: Etchells, J/70, Melges. Subsequent races may be started in any order.

12 CHANGE OF THE NEXT LEG OF THE COURSE

- 12.1 To change the next leg of the course, the race committee will lay a new mark (or move the finishing line to a new position) and remove the original mark as soon as practicable. When in a subsequent change a new mark is replaced, it will be replaced by an original mark.
- 12.2 The race committee may change the course by up to five degrees in bearing and/or 0.2 nm in length without a signal or change of mark color. This changes RRS 33.

13 THE FINISH

- 13.1 The finishing line for Course 1 will be between a staff displaying a blue flag on the race committee vessel at the starboard end and the course side of the green inflatable port-end finishing mark located approximately .1 nautical mile to windward of mark 1.
- 13.2 The finishing line for Course 2 will be between a staff displaying an blue flag on the race committee signal vessel and a green inflatable mark OR a staff displaying a blue flag on a race committee vessel.

14 PENALTY SYSTEM

- 14.1 The penalty for breaking a rule of Part 2 shall be a One Turn Penalty (one tack and one gybe in the same direction) except that for infringements occurring within the *zone*, the penalty shall be a Two Turns Penalty (two tacks and two gybes in the same direction). This changes RRS 44.1 and 44.2.
- 14.2 A boat that has taken a penalty or retired under RRS 44.1 shall complete an acknowledgement form within the protest time limit.

15 TIME LIMITS

- 15.1 The time limit for Course 1 will be three hours from the starting signal or for Course 2 it will be two hours from the starting signal.
- 15.2 If no boat has passed the first windward mark 45 minutes after the starting signal, the race shall be abandoned.
- 15.3 Boats failing to finish within 30 minutes after the first boat sails the course and finishes will be scored Did Not Finish. This changes RRS 35, A4.1 and A.5.

16 PROTESTS AND REQUESTS FOR REDRESS

- 16.1 Protest forms are available at the race office in the New York Yacht Club Sailing Center. Protests shall be delivered to the Jury Secretary within one hour of the docking time of the race committee signal boat after the last race of the day. This time will be posted on the Official Notice Board. This changes RRS 61.3 and 62.2.
- 16.2 Notices will be posted within 30 minutes of the protest time limit to inform competitors of hearings in which they are parties or named as witnesses. Hearings will be held in the Jury Room at the New York Yacht Club Sailing Center on each day beginning as soon as possible.
- 16.3 Notices of protests by the race committee or the jury will be posted within the protest time limit on the Official Notice Board to inform boats under RRS 61.1(b).
- 16.4 Prior to a hearing and with the permission of the jury, a boat that has broken a rule of Part 2 of the RRS and has not complied with the requirements of RRS 31 or 44.1, may accept a 40% place penalty, calculated on the number of boats entered rounded to the nearest whole number (rounding 0.5 upwards), except that she shall not be scored worse than DNF.
- 16.5 For breaches of the rules other than Part 2, the jury may award a lesser penalty than DSQ. This changes RRS 64.1.
- 16.6 Breaches of instructions 14.2, 18, 19, 22, 23, 24, 25 and 26 will not be grounds for protest by a boat. This changes RRS 60.1(a).
- 16.7 On the last day of the regatta:
 - (a) a request for reopening a hearing shall be delivered within the protest time limit if the party requesting reopening was informed of the decision on the previous day;
 - (b) a request for reopening a hearing held on the last day shall be delivered no later than 30 minutes after the party requesting reopening was informed of the decision on that day;
 - (c) the time limit to request redress based upon an action or omission of the race committee or jury shall be 30 minutes after the decision was posted.

This changes RRS 62 and 66.

17 SCORING

- 17.1 Three races are required to be completed to constitute a series.
- 17.2 When fewer than five (5) races have been completed, a boat's series score will be the total of her race scores. When five (5) or more races have been completed, a boat's series scores will be the total of her race scores excluding her worst score.

18 SAFETY REGULATIONS

A boat that retires from a race shall notify the race committee and/or the jury as soon as possible.

19 REPLACEMENT OF CREW OR EQUIPMENT

- 19.1 Substitution of crew will not be allowed without prior written approval of the jury. Approval will only be granted in exceptional circumstances and may be given on the condition that the original crew member will not be permitted to sail on the boat later in the championship.

- 19.2 In the case of damage, boats and/or equipment may only be substituted with the written permission of the jury. When the damage occurs later than 90 minutes before the first scheduled start of the day and before the start of the last race of the day, provisional verbal permission shall be obtained from the jury or race committee. Written permission by the jury shall be obtained before the end of the Protest Time limit on the day in which the substitution takes place.

20 EQUIPMENT AND MEASUREMENT CHECKS

Etchells: A boat or equipment may be inspected at any time for compliance with the class rules and sailing instructions which may include RRS 43 and Class Rules C.2.2 and C.3.2.

21 COACH AND SUPPORT BOATS

- 21.1 Coach and support boats must register with the Organizing Authority prior to acting as a coach or support boat and shall be marked with identifying flags issued by the Organizing Authority. Boats shall display identifying flags at all times while they are acting as a coach or support boat.
- 21.2 All registered coach and support boats will carry on board and operate while on the water a VHF radio capable of transmitting and receiving on VHF Channels 16 and 72 and agree to assist the race committee if directed to do so.
- 21.3 Competitors shall have no communication with, and boats shall not be tied to, coach or support boats from the first warning signal (or any other time the Organizing Authority considers appropriate) of the day until racing has been concluded for the day. Between races, coach and support boats shall not approach, communicate with or transfer provisions or equipment to or from their supported boats unless in a medical or emergency requirement threatening the health of the crew or the flotation of the boat and only with the expressed permission of the jury or the race committee.
- 21.4 Registered coach and support boats and their personnel shall stay at least 100 metres below the starting line from the time of the preparatory signal until five minutes after the start of any race. After this time, coach and support boats may then proceed parallel to the course on the starboard side of the course facing the wind at a distance of at least 100 metres outside areas where boats are racing. Coach and support boats shall not go above the weather marks or the Course 1 finishing line or below the leeward marks or the Course 2 finishing line at any other time while boats are racing.
- 21.5 Any breach of SI 21.1, 21.2, 21.3 or 21.4 by a coach or support boat may result in a penalty being applied to any or all boats serviced by that coach or support boat. The penalty may be disqualification or some other penalty as determined by the jury.
- 21.6 Coach and support boats shall, when requested by the race committee, tow or assist boats not associated with them. Coach and support boats will monitor VHF channel 72 and shall follow all instructions from the race committee.

22 HAUL-OUT RESTRICTIONS

- 22.1 Etchells shall be afloat no later than 1800 on Thursday, June 1, 2017, and shall not be hauled out during the regatta except with and according to the terms of prior written permission of the Race Committee Chairman or Regatta Chairman.
- 22.2 J/70s and M20s shall be afloat no later than 1000 on Saturday, June 3, 2017, and shall not be hauled out during the regatta except with and according to the terms of prior written permission of the Race Committee Chairman or Regatta Chairman.

23 PLASTIC POOLS

Plastic pools or their equivalent shall not be used around competing yachts between the close of registration and the end of the regatta.

24 RADIO COMMUNICATION

- 24.1 This supplements but does not change RRS 2 and 41 for the IECA. All boats shall carry a marine band VHF receiver capable of receiving normal international channels. Boats shall use the radio to report retirement from racing and may use the radio to request assistance in an emergency. These specific uses, as well as listening to race committee communications on VHF Channel 72, will not break the restriction on not using a VHF Radio in Class Rule C.5.2(b)(8). No other transmissions are permitted by competing yachts during each racing day from the first warning signal until the end of the last race of the day.
- 24.2 The race committee may use the radio to advise competitors of race information.
- 24.3 The use of mobile/cell phones or any device capable of sending and/or receiving external electronic communication and/or connecting to the internet is prohibited after the first warning signal (or any other time considered appropriate by the Organizing Authority) on each race day until the boat has completed its day's racing, except as provided in SI 28.1 or in an emergency threatening the safety of any sailor or the flotation of a boat. A report shall be submitted to the jury of any such use.

25 PRIZES

- 25.1 Overall series trophies will be awarded to the top three finishers in each class.
- 25.2 The top finisher in the Etchells class will be named US National Champion.
- 25.3 Other trophies will be awarded at the discretion of the Organizing Authority.

26 DISCLAIMER OF LIABILITY

Competitors participate in the regatta entirely at their own risk. It is the competitor's decision to enter the Championship or to start or continue in any race. Competitors' attention is drawn to RRS Fundamental Rule 4, Decision to Race. The Organizing Authority will not accept any liability for material damage or personal injury or death sustained in conjunction with or prior to, during, or after the regatta.

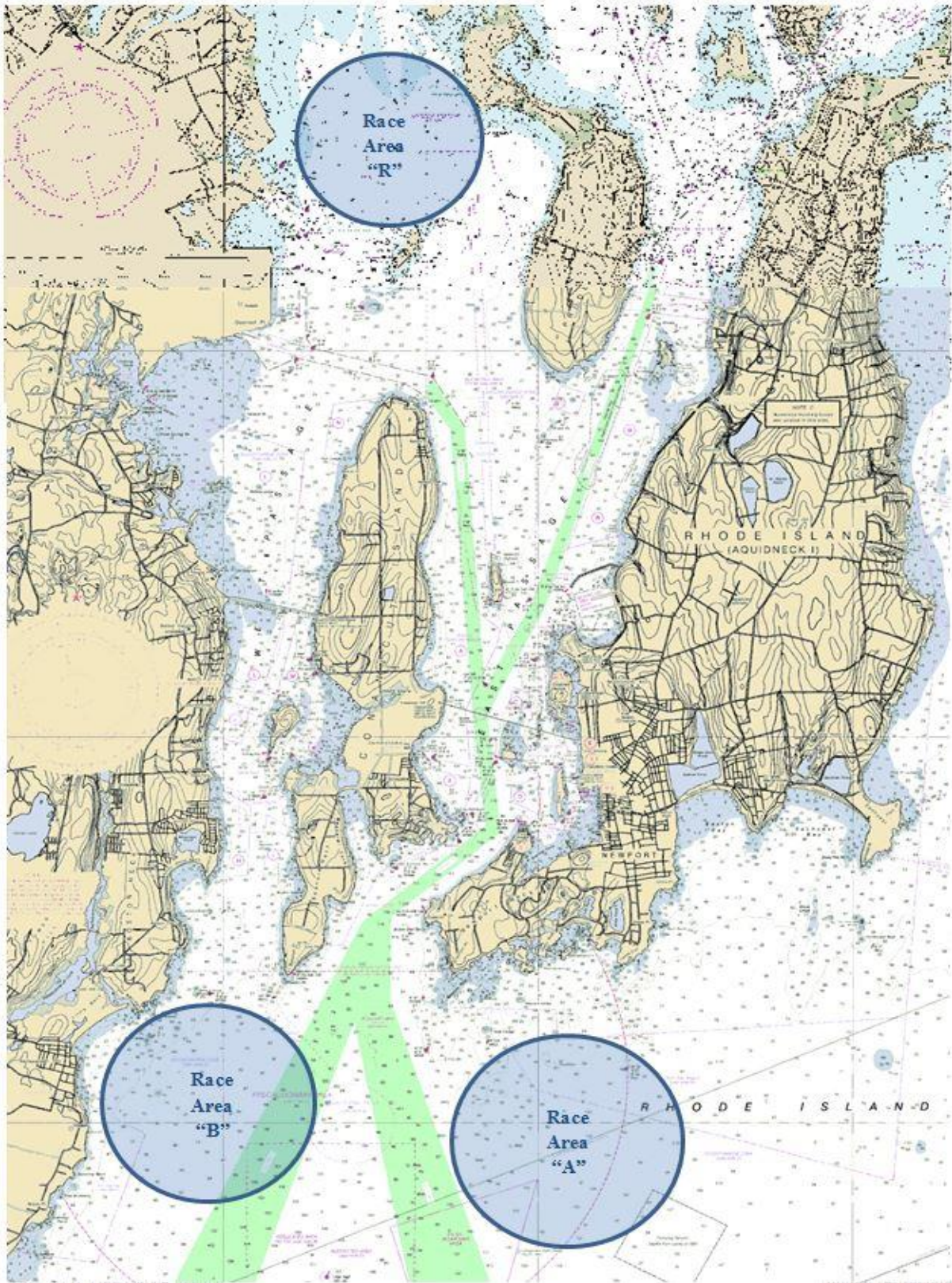
27 INSURANCE

All Yachts competing are required to carry current Third Party Property Liability Insurance as outlined in NOR 16.

© Copyright New York Yacht Club 2017. All Rights Reserved.

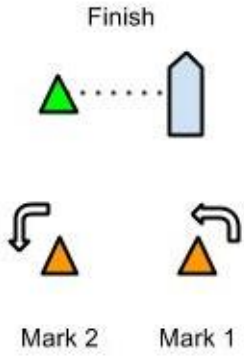
New York Yacht Club; NYYC; Harbour Court, club burgee; certain other logos and marks are trademarks or registered trademarks of the New York Yacht Club in the United States and other countries. All Rights Reserved. Use is prohibited without written permission of the Secretary of the New York Yacht Club.

SI ATTACHMENT A – PRIMARY RACE AREAS



SI ATTACHMENT B – COURSE DIAGRAMS

COURSE 1



COURSE 2

