

New York Yacht Club

July 26 to August 2, 2025

SCHEDULE

SCHEDULE OF EVENTS

Saturday, July 26 – Marblehead

- 1600-1800 Registration at Eastern Yacht Club
1700 New Cruise Participants Reception at Eastern Yacht Club
1800 Captain's Meeting at Eastern Yacht Club
1830 Opening Reception at Eastern Yacht Club
*Evening Dress: Class A/Romeo for Flag Officers and RC Chair
Class A/Romeo for all captains and members
Class B or jacket & tie if Class A not available
please note the dress code calls for white cover*

Sunday, July 27 – Marblehead to Scituate

- 0800 RC Announcements on VHF 72
0815 Harbor Start Signals
0955 Course Signals: Squadron Run #1 from Marblehead to Scituate

Monday, July 28 – Scituate to Duxbury

- 0800 RC Announcements on VHF 72
0815 Harbor Start Signals
0955 Course Signals: Astor Cup; Scituate to Duxbury

Tuesday, July 29 – Duxbury to Provincetown

- 0800 RC Announcements on VHF 72
0815 Harbor Start Signals
0955 Course Signals: Squadron Run #2 from Duxbury to Provincetown
1700-1900 Flag Officer's Reception at the Pilgrim Museum; reservations required
Dress: Smart Casual / Nautical

Wednesday, July 30 – Provincetown LAYDAY

- 0800 RC Announcements on VHF 72
0800 Dress Ship until 2001
1730 Young Members Cocktail Competition

Thursday, July 31 – Provincetown to Marion

- 0800 RC Announcements on VHF 72
0815 Harbor Start Signals
0830 Parade with fleet from outside the breakwater to G "1" Fl G 4s BELL outside Provincetown
0955 Course Signals: Squadron Run #3 from Provincetown to Marion

Friday, August 1 – Marion to Vineyard Haven

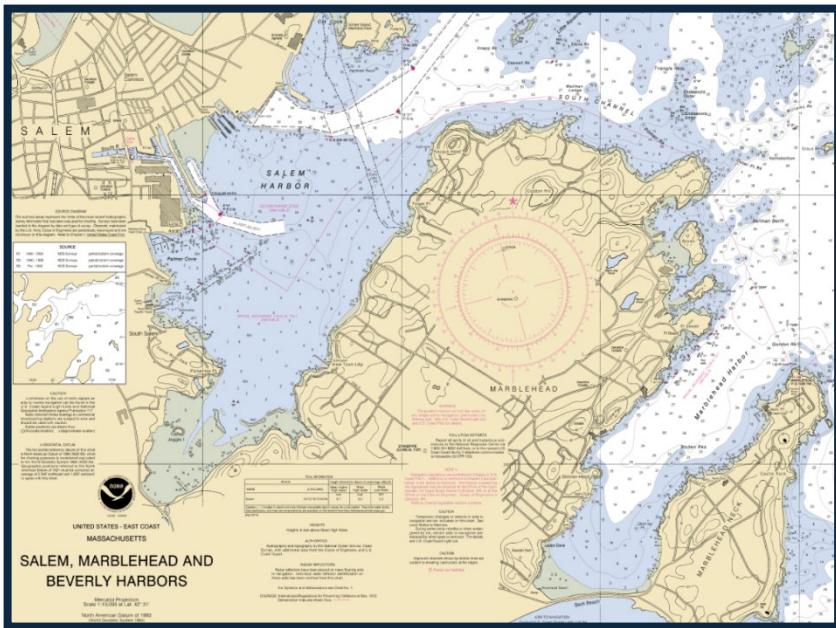
- 0800 RC Announcements on VHF 72
0815 Harbor Start signals
0955 Course Signals: Squadron Run #4 Marion to Vineyard Haven
1700 Gannon & Benjamin Marine Railway Reception
Dress: Sailing Attire

Saturday, August 2 – Vineyard Haven to Newport

- 0800 RC Announcements on VHF 72
0815 Harbor Start signals
0830 Parade with fleet from R N "6" to R "2" Fl R 4s GONG NE of West Chop
1055 Course Signals: Squadron run #5 from Vineyard Haven to Newport
1900 NYYC Summer White Party at Harbour Court
Dress: Party Whites

Cruise Disbands

MARBLEHEAD



MARBLEHEAD, MA

Saturday, July 26th

Harbor Master

Mark Souza VHF 16 781-631-2386 Souzam@marblehead.org
 Bill McHugh VHF 16 781-741-0098 Harbormaster@salem.com

Harbor Regulations

5 mph, no wake in the harbor. Holding tanks must be used. No towing of water-ski/tubes/boards.

Anchorage

Transient vessels are welcome to drop anchor on the Marblehead side of the harbor, off Naugus Head, just short of the mooring field (42 31.30N, 070 52.0W). Mariners are strongly encouraged to check in with the Harbormaster prior to dropping anchor.

Moorings/ Dockage

Tucker's Wharf Municipal Docks (Marblehead) VHF 16 781-631-2386
 No slips, linear floating docks. Limited transient moorings MAX LOA 60'.
 Lat/Long: 42.49734,-70.86144

Safe Harbor Hawthorne Cove (Salem) VHF 8 978-740-9890
 Transient Slips: MAX LOA 150' / MAX draft 8' / MAX beam 20'
 Moorings: Up to 65' / MAX draft 10'
 Launch Service 1-978-744-2727

Pickering Wharf Marina (Salem) VHF 9 978-210-4584
 Transient slips: MAX LOA 120' / MAX draft 7ft
 Lat/Long: 42.51955, -70.88959

Dinghy Docks

Eastern Yacht Club

Very limited amount of space for dinghies under 11' in length; long painter required.

Safe Harbor Hawthorne Cove

Dinghies can be tied up in the designated guest spots marked "G".

Launches	Jordan's Launch	State St. Landing	VHF 71
	<i>Services Marblehead Harbor. 781-631-5992. \$8/person</i>		
	Mid-Harbor Launch	Village St. Dock	VHF 69
	<i>Services Marblehead W. Shore & Salem Harbor. 781-631-0611. \$9/Person</i>		
	NYC RIBs will be assisting in both Marblehead and Salem from 1600-2100. The RIB in Marblehead will be working with Jordan's launch on VHF 71 to assist when needed. The RIB in Salem will be monitoring VHF 72 and servicing boats along the Marblehead shoreline.		
Shuttle	For those in Salem, A shuttle will run continuously between Safe Harbor Hawthorne Cove in Salem to Eastern Yacht Club from 1600-2100.		
Marine Facilities	Self Service Pump Out	Cliff St. Dock	
	Marblehead Pump Crew		VHF 9
	<i>Pump-out boat. Owner/captain must be onboard to receive service.</i>		
	The Forepeak Ship's Store	81 Front St.	781-631-7184
	<i>Fuel, Ice, Marine Supply.</i>	FUEL DOCK	781-639-2944
Provisions	Crosby's Marketplace	118 Washington St.	781-631-1741
	Shubie's Marketplace	16 Atlantic Ave.	781-631-0149
	Little Harbor Lobster Co.	3 Beacon St.	781-639-1961
Dining/ Activities	The Landing Restaurant	81 Front St.	781-639-1266
	<i>(Has dinghy dock) Local seafood, globally inspired cuisine, craft cocktails.</i>		
	The Barnacle Restaurant	141 Front St.	781-631-4236
	<i>Waterfront, New England style seafood restaurant and bar</i>		
	Elia Taverna	261 Washington St.	617-827-9186
	<i>Traditional and authentic Greek restaurant & cocktail bar.</i>		
	The Beacon	123 Pleasant St.	781-631-0180
<i>Restaurant & piano bar with live performances and casual cuisine.</i>			
	Maddie's Sail Loft	15 State St.	781-631-9824
	<i>Traditional New England seafood pub and sports bar.</i>		
	Fresca Pizza & Pasta	50 Atlantic Ave.	781-990-1968
	<i>BYOB, woodfire pizza & house-made pasta. Dine in or take out.</i>		

Three Cod Tavern 141 Pleasant St. 781-639-3263
Traditional Seafood Tavern with casual atmosphere.

F.L. Woods Nautical Merchants 76 Washington St. 781-631-0221
Nautical clothing & home goods store in historic downtown.

Herreshoff Castle at Crocker Park 2 Crocker Park Ln.
10th Century style Gothic Castle, once owned by yacht designer L. Francis Herreshoff. Situated on 2.82 acres of public land with walking paths, benches and some of the best views of the Harbor.

Parking

Usher's Parking Lot
\$50/day, per car. Pre-registration and pre-payment are required. Vehicles must complete digital form to be permitted to park; Scan the QR code or find the link under the berthing section on the Cruise webpage.



Marblehead Parking Form

CRUISE SCHEDULE & ACTIVITIES

Saturday, July 26

1600-1800 Registration - Eastern Yacht Club
1700 New Cruise Participants Reception at Eastern Yacht Club
1800 Captain's Meeting - Eastern Yacht Club
1830 Opening Reception - Eastern Yacht Club

Sunday, July 27

0955 Course Signals - Squadron Run #1 from Marblehead to Scituate, MA

Historical Perspective and Interesting Facts

Provided by the Heritage Committee

MARBLEHEAD

A favorite of sailors, this picturesque coastal town is about 17 miles north of Boston. Marblehead was once a major fishing and shipbuilding center, earning it the nickname "the birthplace of the American Navy." Its several yacht clubs are magnificent, and it has a vibrant sailing culture. Marblehead was the home of L. Francis Herreshoff, where he created iconic vessels like the 72 ketch *Ticonderoga*, and many other great designs. He lived in Herreshoff Castle that can be seen from the mooring field in the harbor. His legacy endures in modern yacht design and classic boat restoration.

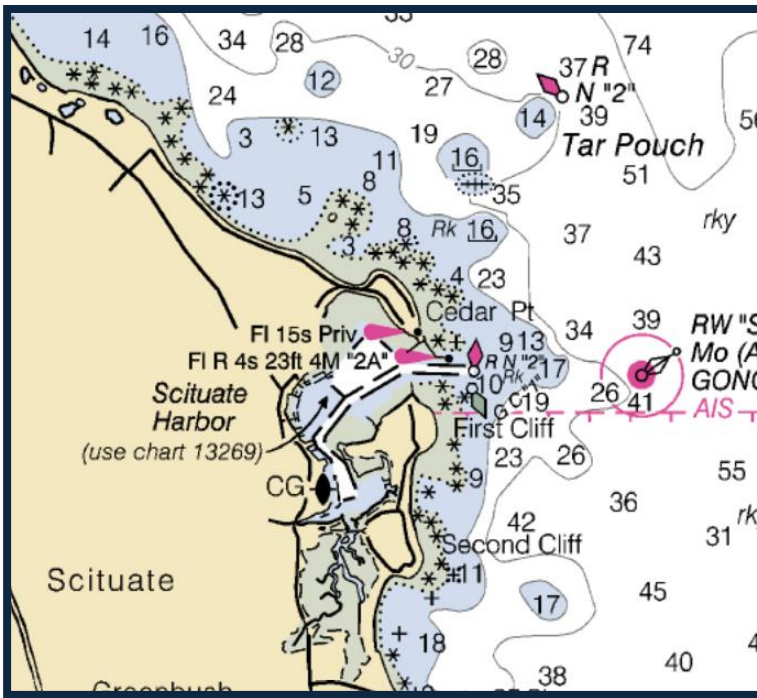
The point of departure for the 169th Annual Cruise is in Marblehead. The waters between Marblehead and Scituate are part of Massachusetts Bay. This stretch includes 25 NM of open ocean, with no harbors of refuge, making it a direct but exposed route. It encompasses areas like Salem Sound near Marblehead and approaches Scituate Harbor, which is well protected. Sudden weather changes may occur, requiring careful plotting and vigilance.

SALEM

The town has a rich maritime history. Despite tourist folklore, the center of the witch trials of 1692 was not Salem Town but Salem Village, upriver, today named Danvers.

Its strategic location and harbor made Salem a seafaring community. Salem's sailors and traders were renowned for their voyages to distant lands, including the East Indies. Salem's sailors also contributed to privateering during the American Revolution, disrupting enemy shipping and supporting the war effort. At Pickering Wharf one can see barks and shallops from the 17th century in day-sailing replicas.

SCITUATE



SCITUATE, MA

Sunday, July 27th

Harbor Master	Stephen Mone VHF 16 781-545-2130 harbormaster@scituatema.gov
Harbor Regulations	5 mph, no wake in the harbor. Holding tanks must be used. No tie-up at town-owned docks without permit. No towing of water-ski/tubes/boards.
Anchorage	<p>Off Peggotty Beach <i>(Scituate)</i></p> <p>Spinnaker Cove <i>(Hull Bay)</i> 6-9ft depth. Good holding in mud.</p> <p>Bumpkin Island <i>(Hull Bay)</i> 9-11' depth. Good holding in mud, slightly exposed North through West.</p> <p>Perty Cove <i>(Hull Bay)</i> 11-16' depth. Fair holding in mud and rock. Exposed North through S.W.</p> <p>Glades off of Hog Rock <i>(Cohasset)</i></p> <p>White Head <i>(Cohasset)</i></p>
Tides	<p>Scituate Harbor</p> <p>July 27: High 0127 (10.33 ft.) Low 1956 (0.57 ft.) July 28: High 0214 (9.98 ft.) Low 2043 (0.67 ft.)</p>
Moorings/ Dockage	<p>TPG Scituate Harbor VHF 9 781-545-2165</p> <p>Floating docks with pilings. Book transient slips through Dockwa. MAX LOA: 70' / MAX Draft: 7' / MAX Beam: 16'</p>

Cole Parkway Marina VHF 9 781-545-2130
Transient Slips: First come, first served. Book through Dockwa. \$3/ft
MAX LOA: 50' / MAX Draft: 7'

Scituate Marine Park VHF 9 781-545-2130
Transient Slips: First come, first served. Book through Dockwa. \$3/ft
MAX LOA: 50' / MAX Draft: 8' / MAX Beam: 15'

Satuit Boat Club VHF 9
Transient moorings.

Scituate Harbor Yacht Club EXT 4 781-545-0372
Limited transient moorings.

Safe Harbor Sunset Bay (Hull) VHF 7 781-925-2828

Marine Facilities

Scituate Launch VHF 9 781-545-4154
Operates from 0800 – 2200.

TPG Mill Wharf VHF 9 781-545-3333
Gasoline, Fuel dock, Oil, Ice.

Scituate Boat Works 781-545-0487
Full-service boatyard.

Provisions

Board 143 776 Country Way 781-236-3184
Handcrafted cheeses, local meats, charcuterie, specialty wine and spirits.

Village Market 71 Front St. 781-545-4896
Local market. Offers produce, meat, baked goods, beer and wine.

Sandhills General Store 160 Turner Rd. 781-378-0169
Local general store. Carries beer/wine and has a full deli.

Dining/ Activities

The Mill Wharf 23 Mill Wharf Plaza 781-545-3999
Classic New England Fare. Panoramic views of the harbor.

Salt Society 146 Front St. 781-733-9030
Specialty sushi restaurant with several American favorites. Craft cocktails.

Galley Kitchen & Raw Bar 95 Front St. 781-545-3663
Seafood, Tacos, Poke Bowls, Ceviche, Craft cocktails & beer/ wine bar.

Satuit Tavern 39 Jericho Rd. 781-545-2500
Fresh Seafood, pub-style pizza, casual dining atmosphere with a full bar.

Hibernian Tavern 111 Front St. 781-378-0037
Irish-style tavern with diverse menu options and specialty, craft cocktails.

Vine Bar 135 Front St. 781-546-2766
Serves artisanal cheeses, tapas, small plates and more.

Widow's Walk Golf Course 250 The Driftway 781-544-0032
Sr. & jr. golf for free. 18 holes/ \$60. 9 holes/ \$34. Carts \$22/person

CRUISE SCHEDULE & ACTIVITIES

Sunday, July 27

0955 Course Signals – Squadron Run #1 from Marblehead to Scituate

Monday, July 28

0955 Course Signals – Astor Cup; Scituate to Duxbury

Historical Perspective and Interesting Facts

Provided by the Heritage Committee

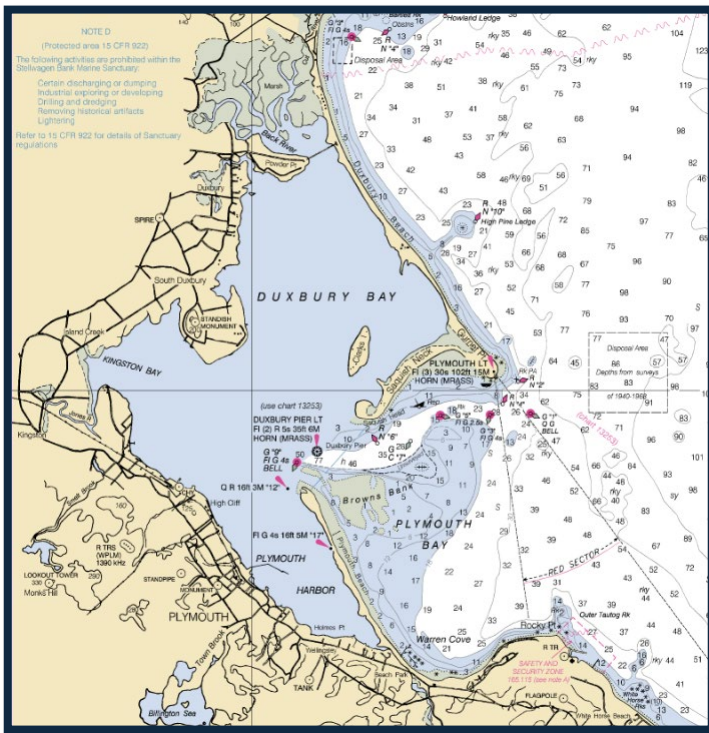
SCITUATE

The town derives its name from the Wampanoag word “Satuit”, meaning “cold brook” which refers to a stream that flows into the town’s harbor. The Pilgrims interacted with the natives with both cooperation and exploitation. Colonial expansion led to conflicts like King Philip’s War (1675-1678), to the ultimate detriment of the Wampanoag population.

HINGHAM

This historic town in Plymouth County was settled by English colonists in 1633. The town is known for its well-preserved antique homes., including the “Old Ordinary” which is now a museum.

DUXBURY



DUXBURY, MA

Monday, July 28th

Harbor Master **Jake Emerson** (Duxbury)
 VHF 16 781-934-2866 harbormaster@town.duxbury.ma.us

Chad Hunter (Plymouth)
 VHF 16 508-830-4182 harbormaster@plymouth-ma.gov

Harbor Regulations Holding tanks must be used. Slow, no wake zone in harbor.

Anchorage **North of Clark's Island** (Duxbury)
 Good holding ground for shallower draft boats.

Cow Yard (Duxbury)
 Southwest of Clark's Island, good for deeper draft boats.

Goose Point (Plymouth)
 Depth: 10-15'

Launch **Mattakesett**
 Services moored and anchored boats in Duxbury Harbor. VHF 10

NYC RIBs will be onsite offering rides between Duxbury Yacht Club and boats in the mooring and anchorages in Duxbury Harbor 1500-2000. VHF 72

Moorings/ Dockage **Request mooring with Duxbury Harbormaster**
 Transient moorings in Duxbury are available if not in use by the owner. No reservations are made in advance, call the day before. (MAX LOA: 45 ft.)

Safe Harbor Plymouth VHF 9 508-746-4500
 Transient Slips: MAX LOA: 150' / MAX Beam: 25' / MAX Draft: 8'
 Lat/Long: 41.9564107, -70.6603899

Marine Facilities	Duxbury Yacht Club	VHF 11	489 Washington St.	781-934-2122
	Bayside Marine		441 Washington St.	781-934-0561
			<i>Full-service boat yard and dry stack marina.</i>	
	Long Point Marine		553 Washington St.	781-934-5302
			<i>Full-service boat yard with mechanical/mooring services.</i>	
	Duxbury Harbormaster	VHF 16		781-934-2866
			<i>Pump-out service.</i>	
	Duxbury Bait & Tackle		433 Washington St.	781-934-0242
Provisions	Brother's Market		46 Depot Street	781-452-8282
			<i>Butcher/ seafood, produce, deli, bakery, cheese, florals, beer/wine.</i>	
	Depot Street Market		11 Depot St.	781-934-2863
			<i>Gourmet take-out & bakery with prepared meals and specialty foods.</i>	
	The Foodsmith		17 Standish St.	781-934-0134
			<i>Small market offering locally sourced seasonal ingredients.</i>	
	Star Market (Marshfield)		1 Snow Rd.	781-837-3023
			<i>Full-service supermarket with pharmacy.</i>	
	Common Sense Store (Plymouth)		53 Main St.	508-503-6770
			<i>Farmers market produce, bakery, general store.</i>	
Dining	The Anchor		289 St. George St.	781-452-7594
			<i>Casual, New-American/ Seafood restaurant and bar. Serves breakfast.</i>	
	The Raw Bar Island Creek Oysters		403 Washington St.	781-934-2012
			<i>Outdoor raw bar, beer garden, wine bar, games, picnic tables.</i>	
	Chestnut Street Grille		24 Chestnut St.	781-934-6920
			<i>Bar & grill serving American cuisine and creative cocktails.</i>	
	Windsor House		390 Washington St.	781-934-0991
			<i>Located within Island Creek Oyster Farm. Brunch, Dinner, Drinks.</i>	
	Bluefish River Tavern		581 Tremont St.	339-217-2115
			<i>Seafood & steak house, relaxed environment, craft cocktails.</i>	
	Oysterman		30 Railroad Ave.	781-934-2900
			<i>Surf n' turf hangout with raw-bar, comfort food, brunch, wine and beer.</i>	
	French Memories Bakery		459 Washington St.	781-934-9020
			<i>Café, artisanal breads and quiches, sandwiches and sweets.</i>	

The Yellow Deli (Plymouth) 59 Main St. 508-747-3354
Open 24/7. Homestyle dining, indoor/outdoor seating, wood-fire pizza.

Tavern on the Wharf (Plymouth) 6 Town Wharf 508-927-4961
Waterfront, seafood dining. Live music. \$1 oysters 2-5 p.m. on Mondays.

Activities	Duxbury Beach Park	260 Gurnet Rd.	781-934-7300
	Alden House Historic Site	105 Alden St.	781-934-9092
	Art Complex Museum	189 Alden St.	781-934-6634
	Pilgrim Hall Museum	75 Court St.	508-746-1620
	Plymouth Bike Rentals	170 Water St.	508-732-0120

CRUISE SCHEDULE & ACTIVITIES

Monday, July 28

0955	Course Signals – Astor Cup
0700-1600	DYC Golf Course open to NYYC members (RSVP required)*
0800-2100	DYC Tennis Courts open to NYYC members (RSVP required)*
1200-1800	DYC Pickle Ball Courts open to NYYC members (RSVP required)*
1200-1900	DYC Pool open to NYYC members*
1500	Young Members small boat race
1900-2100	Yacht-hop in Duxbury Harbor anchorage

Tuesday, July 29

0955	Course Signals – Squadron Run #2 Duxbury to Provincetown, MA.
------	---

**All Duxbury Yacht Club amenities listed above are also available to NYYC members on Tuesday, July 28.*

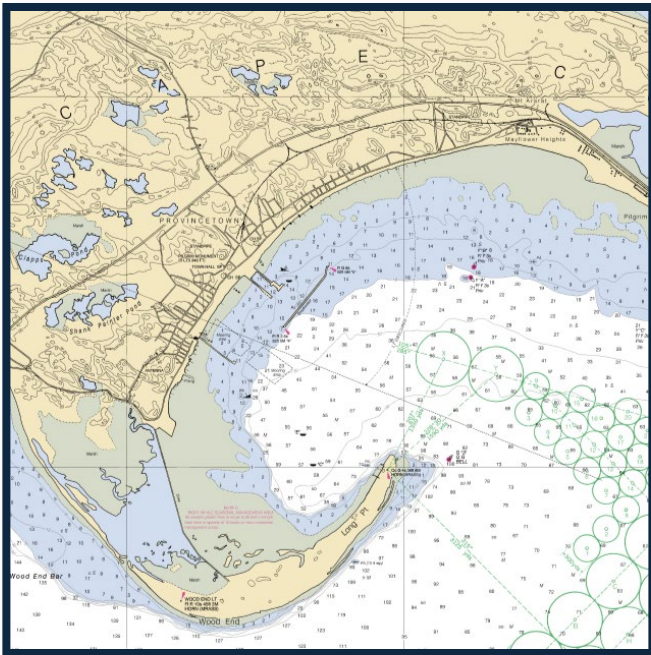
Historical Perspective and Interesting Facts

Provided by the Heritage Committee

When the squadron reaches Duxbury, it will enter the waters and grounds of America's first colonial settlers. For yacht sailors today, it is worth remembering one prominent lineage in particular: the Alden family tracing its roots to John Alden, a passenger on the *Mayflower* in 1620. This cooper (barrel maker) chose to settle in Plymouth Colony. He married fellow Mayflower passenger Priscilla Mullins. Together they had ten children, establishing one of America's founding families. The **Alden Kindred of America**, established in 1906, preserves the family's legacy and maintains the historic site which can be visited in Duxbury.

John Alden played a key role in the founding of Duxbury and its establishment as a separate church congregation. His son John Jr. was a sea captain and had a colorful history. He was accused of witchcraft in the turbulent Salem trials of 1692 and managed to escape from prison and a likely execution. Down the line, and among the one million descendants of the founding couple, is the celebrated naval architect, designer of iconic yachts (*Malabar X* and followers, General Patton's *When and If*, etc.) John G. Alden, who was also a founding member of the CCA. In Duxbury, the port remembers his 18' knockabout *Duxbury Duck*, built for navigating the shallow waters of Duxbury Bay. A total of 60 boats were originally built, starting in 1925, and a few are still sailing today.

PROVINCETOWN



PROVINCETOWN, MA

Tuesday, July 29th - Wednesday, July 30th

Harbor Master Pete Whinn 508-487-7030 pwhinn@provincetown-ma.gov

Harbor Regulations Holding tanks must be used. No vessel shall exceed 5pmh in the harbor.

Anchorage East or west of the breakwater. If you go to the West, be sure to stay out of the channel & stay to the west of the Town mooring field. P-Town has a 10' tidal range. Anchorage is also available South of the CG Pier, between Flyer's and the Town moorings. No launch service to the anchorage fields.

NE - Cape Cod Bay Depth: 9-12', soft mud holding exposed to S.E.

SW - Cape Cod Bay Depth: 9-22', muddy holding, open and exposed E.

Moorings/ Dockage **Provincetown Marina** VHF 9 508-487-0571
 Transient Moorings & Slips: MAX LOA: 250'

Flyer's Boat Rentals VHF 11 508-487-0898
 Transient Moorings MAX LOA 100'. Short-term tie up upon request.

Long Point Marina VHF 14 774-593-5120

Marine Facilities **Pump Out** VHF 12 508-487-7030
 Provincetown Harbormaster provides pump-outs from 8am-3pm daily.

Self Service Pump Out Station
 Located on courtesy float between MacMillan Wharf & P-town Marina.

Dinghy Dock
 Located at Harbormaster's Office, short term use permitted up to 7 hours, vessels 16' and under. Must be tied by bow and have adequate fenders.

Diesel & Fuel

CITGO gas station/ diesel dock west of P-Town Marina pier. If you need diesel fuel for larger vessels, call Marcey Oil at 508-487-0219 or Cape Cod Oil at 508-487-0205 for fuel delivery to MacMillan Wharf.

Ice/Water

Available at Harbormaster's Office, located at 1 Macmillan Pier.

Port Activities in Provincetown

Shopping

Henry & Company 210 Commercial St. 508-487-6215
Men's Apparel, footwear, accessories, fragrance & home décor.

The Captain's Daughters 384 Commercial St. 774-593-3010
Apparel, accessories & art.

MAUCLÈRE 323 Commercial St. 508-487-9075
Fine, handmade leather purses, wallets, luggage, cobbled sandals and belts.

Vehicles

P'Town Carts 148 Bradford St. 508-246-1117
Street legal, electric golf-cart rental with free parking at municipal lots.

Enterprise Car Rental 176 Race Point Rd. 580-487-0009
Located within Provincetown Municipal Airport.

Ptown Taxi Service 508-481-1289

Cape Cab 508-487-2222

Bike Rental

Provincetown Bike Rental 136 Bradford St. 774-447-4539
Standard 7 speed bicycles, e-bikes & hybrids.

The Bike Shack 63 Shank Painter Rd. 978-660-7183
Hybrids, Mountain Bikes, Comfort Bikes, Beach Cruisers in various sizes.

Tours

Commercial Street Pedicabs Tour 508-578-7878
Book a private tour of Provincetown in an open-air pedicab.

Mayflower Trolley Tour 508-487-8687
45-minute sightseeing tours departing from the Town Hall.

Whale Watching

- Dolphin Fleet of P-Town 301 Commercial St. 508-240-3636
- Captain John Boats Macmillan Wharf 508-690-5028

Galleries

Art Market Provincetown 432 Commercial St. 646-298-9258
Contemporary art gallery space.

Pilgrim Monument High Pole Hill Rd. 508-487-1310
Visit the top of the 252-foot tower, the site of the Mayflower's 1st landing.

Provincetown Public Library 356 Commercial St. 508-487-7094
Located inside an historic building, featuring a 66' model of the Rose Dorothea Schooner (which brought the Lipton Cup back to Provincetown in 1907)

Beaches

Beach Shuttles

Shuttle info is available at the Chamber of Comm. at base of MacMillan Wharf.

Herring Cove Beach

Located at the end of Route 6 on Province Lands Rd. Has restrooms and parking.

Race Point Beach

Follow Race Point Rd. off Route 6. Has restrooms, showers and changing rooms.

Long Point Beach

Features the iconic Long Point Light House. Not accessible by car. You can walk (3 miles) via the Provincetown Causeway or take the ferry from Macmillan Pier.

Wellness

Shui Spa 82 Bradford St. 508-487-6767
Massage, Skincare & Facials, Himalayan Salt Sauna.

Mussel Beach Health Club 35 Bradford St. 508-487-0001
Day passes available. Group Fitness classes, Free weights & Cardio Machines.

Outermost Yoga 494 Commercial St. 774-538-9089
Yoga collaboration with 20+ weekly classes.

Provisions

Angel Foods 467 Commercial St. 508-487-6666
Gourmet market, catering, prepared foods.

Perry's Fine Wine & Liquors 1 Tremont St. 508-487-0140
Fine wine & liquor, non-alcoholic spirits, mixers, cheese, caviar, sweets.

Provincetown Market 85 Shank Painter Rd. 508-487-6227
Fresh fish and lobster, farm raised meats, fine cheeses, seasonal produce.

Adam's Pharmacy 248 Commercial St. 508-487-0093

Breakfast	Café Haven	199 Commercial St.	508-487-1991
	<i>Breakfast, Lunch, dinner & bar.</i>		
	Café Maria	277 Commercial St.	508-487-9116
	<i>Casual, beachfront breakfast & lunch.</i>		
	Connie's Bakery & Café	205 Commercial St.	508-487-2167
	<i>Homestyle breakfast & lunch, baked goods.</i>		
	French patisserie et Café	353A Commercial St.	508-413-7086
<i>Fresh baked goods, breakfast & lunch, tea & coffee.</i>			
Dining	Grab n' Go Health Bar	212 Commercial St.	508-487-1827
	<i>Juices, smoothies, Acai bowls, Salads Etc.</i>		
	Joe Coffee	170 Commercial St.	860-573-1885
	<i>Seaside coffee shop, baked goods.</i>		
	Relish	93 Commercial St.	508-487-8077
	<i>Bakery & sandwich shop.</i>		
	Pepe's Wharf	371 Commercial St.	508-487-8717
	<i>Waterfront seafood restaurant with deck-seating & bar.</i>		
	Ross' Grill	237 Commercial St.	508-487-8878
	<i>Sleek, Waterfront bistro and bar, "New-American" Cuisine.</i>		
Tin Pan Alley	269 Commercial St.	508-487-1648	
<i>Global fusion, locally sourced ingredients, live entertainment.</i>			
Ciro & Sal's	4 Kiley Ct.	508-487-6444	
<i>Traditional Northern-Italian Cuisine, wine cellar/bar, garden gazebo.</i>			
Mew's Restaurant	429 Commercial St.	508-487-1500	
<i>Waterfront, classically prepared gourmet cuisine, local ingredients.</i>			
Grand Central	5 Masonic Pl.	508-487-7599	
<i>Seafood restaurant nestled in 19th century ship captain's home.</i>			
Victor's	175 Bradford St.	508-487-1777	
<i>Intimate dining, tapas-style plates, raw bar, specialty cocktails.</i>			
Jimmy's Hideaway	179 Commercial St.	508-487-1011	
<i>Globally inspired cuisine with outdoor seating and a water view.</i>			
Sal's Place	99 Commercial St.	508-487-1279	
<i>Waterfront, Italian restaurant with outdoor seating.</i>			

Nor'East Beer Garden 206 Commercial St. 508-487-2337
Craft beer & cocktails, curated wine selection, eclectic cuisine.

Patio 328 Commercial St. 508-487-4003
American Grill & Cocktail bar. Indoor and outdoor dining.

Cocktails **Harbor Lounge** 359 Commercial St. 508-413-9527
Waterfront cocktail lounge.

Mezzeterranean 401 Commercial St. 508-487-0600
Craft cocktails, fine wine, mezze & tapas.

Provincetown Brewing Co. 141 Bradford St. 508-413-9076

CRUISE SCHEDULE & ACTIVITIES

Tuesday, July 29

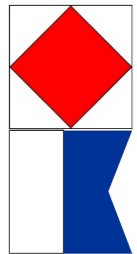
0955 Course Signals – Squadron #2 Duxbury to Provincetown
1700-1900 Flag Officer's Reception at the Pilgrim Monument. Reservations required.

Wednesday, July 30

0955 Lay Day
1730 Young Members Cocktail Competition

The YM Committee is pleased to host the 2nd Annual Cocktail Competition, an exceptional opportunity to connect with fellow members in good spirits.

Join to celebrate the creativity of NYYC membership in the festive tradition of the Annual Cruise. Competitors will vie for a coveted prize—and lasting bragging rights. The competition will be held aboard *Blue Peter*, docked at Provincetown Marina. All challengers are welcome.



Email Jordan.Rosenlicht@gmail.com to register or hail *Blue Peter* via VHF by 1800 on July 29. Participating yachts are encouraged to fly code flags F-A to mark their involvement.

Thursday, July 31

0830 Parade – See Sailing Instructions for detail
0955 Course Signals - Squadron Run #3 Provincetown to Marion

Historical Perspective and Interesting Facts

Provided by the Heritage Committee

Over the centuries Provincetown saw enormous change, from a fishing village to an agrarian place with some limited industrial activity, and lastly to a bohemian resort town, with a vibrant art and social scene in a spectacular natural setting.

This is what it looked like to an observer in 1782:

"...this great peninsula is but a sandy pine track, a few good spots excepted.

[...] I am at a loss to conceive on what the inhabitants live, besides clams, oysters, and fish; their puny lands being the most ungrateful soil in the world." (Crèvecoeur, *Letters from an American Farmer*, 1782)

And this is how a modern historian describes the change:

"Portuguese and Yankee residents [switched] with ease from an independent, agrarian community to a town dependent on tourists and a seasonal, service economy. [...] Throughout town tea dances replaced bowling alleys; gift shops and art galleries stood in place of stores that once sold household staples; and social entities like bars, restaurants, and guesthouses took the place of civic institutions like churches, schools, and fire stations." (Krahulik, 2005).

It is a story of human invasion and succession, with unique characteristics.

Good Reads:

Patrick J. Lynch, *A Field Guide to Cape Cod*. Yale University Press, 2019.

J. Hector St. John de Crèvecoeur, *Letters from Nantucket and Martha's Vineyard*.

Boston/Cambridge: Applewood Books, 1986.

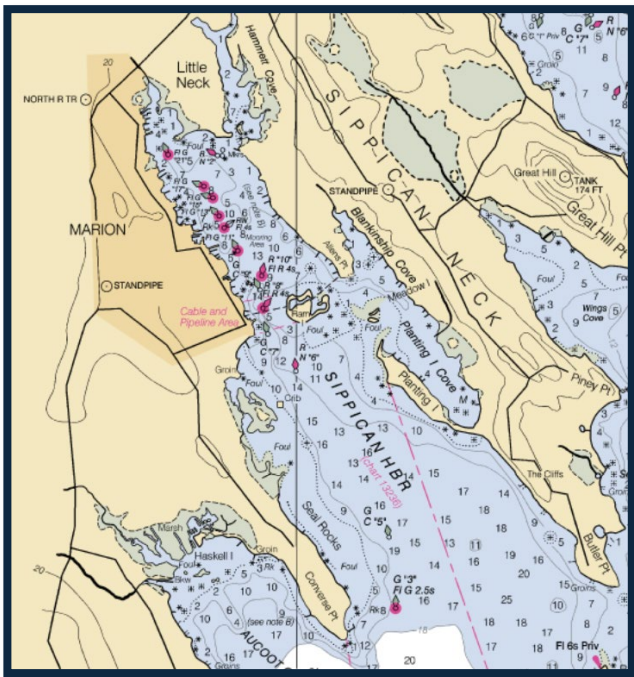
Karen Christel Krahulik, *Provincetown. From Pilgrim Landing to Gay Resort*. New York and London: NYU Press 2005.

Nathaniel Philbrick, *Mayflower*. Penguin Books, 2007.

McKenzie, Robert Tracy. "Five Myths About the Pilgrims." *Washington Post*, 23 Nov. 2013.

Tom Jackson, "Mayflower II's Rebirth," *Wooden Boat*, No. 274, May/June 2020.

MARION



MARION, MA

Thursday, July 31st

Harbor Master Adam Murphy 508-748-3535 amurphy@marionma.gov

Harbor Regulations Holding tanks must be used. Slow, no wake zone in the harbor.

Anchorage **Sippican Harbor Anchorage** 41° 41' 40.05", -70° 45' 17.19"
Just outside Marion Proper, this fair-weather anchorage offers good holding in sand. Exposed to the Southeast.

Moorings/ Dockage **Beverly Yacht Club** VHF 68 508-748-0540
(Very limited) Transient moorings available, first come first serve. MAX LOA: 60'

Burr Bros. Boats Inc. VHF 68 508-748-0541
Limited transient slips/ moorings. MAX LOA 65'. Book through Dockwa.

Marine Facilities **Barden's Boat Yard** VHF 68 508-748-0250
Launch Service, gas and fuel dock.

Burr Bros. Boats Inc. VHF 68 508-748-0541
Launch service, fuel dock, water hook-up, pump-out, ice.

Provisions **Fieldstone Market** 806 Mill St. 774-553-5094
Local farmer's market, baked goods, artisanal cheeses, prepared foods.

Marion General Store 140 Front St. 508-748-0340
Meat & Deli, produce, bakery, groceries, wines & spirits.

Dining/ Activities **Cast Seaside Bites & Bar** 7 Cottage St. 774-553-5576
Marion *Tapas style, Latin-American cuisine & fresh seafood.*

Kate's Simple Eats 148 Front St. 508-748-0042
Casual environment serving breakfast and lunch.

Brew Fish Bar & Eatery 210 Spring St.
Craft beer, casual eats.

The Atlantic Bistro 167 Spring St. 774-553-5314
Fine dining, French cuisine.

Cilantro Thai 347 Front St. 508-748-2700
Authentic Thai food.

Mattapoisett **On the Go** 50 Marion Rd 508-758-9922
Casual, count-service sandwich shop for lunch and dinner

Shipyard Galley 67 County Rd C 508-758-9408
Family -run shop offering baked goods, soups, sandwiches and breakfast.

Uncle Jon's Coffees 88 North St 508-758-4540
Coffee and homemade backed goods.

CRUISE SCHEDULE & ACTIVITIES

Thursday, July 31

0955 Course Signals - Squadron Run #3 Provincetown to Marion

Friday August 1

0955 Course Signals – Squadron Run #4 from Marion to Vineyard Haven

Historical Perspective and Interesting Facts

Provided by the Heritage Committee

As the squadron enters Marion, it is worth recalling that the town was first settled in 1679 as "Sippican" ("Long River"). It was the name given to the place by the "People of the First Light," the Wampanoag. The place became mostly known for its many local sea captains and sailors whose homes were in town. There were some small shipbuilding operations on the harbor as well. After sharp conflicts with neighboring Mattapoisett, the town was incorporated on May 14, 1852, and renamed Marion in honor of Revolutionary War hero Francis Marion.

Since that time, Marion's economy has mostly relied on the waters of Buzzards Bay for fishing, for the summer tourism industry, and for recreational sailing. Presidents Grover Cleveland and Franklin D. Roosevelt were summer residents.

Marion is home to the Tabor Academy. It is an independent preparatory school founded in 1876 and known for its marine science courses.

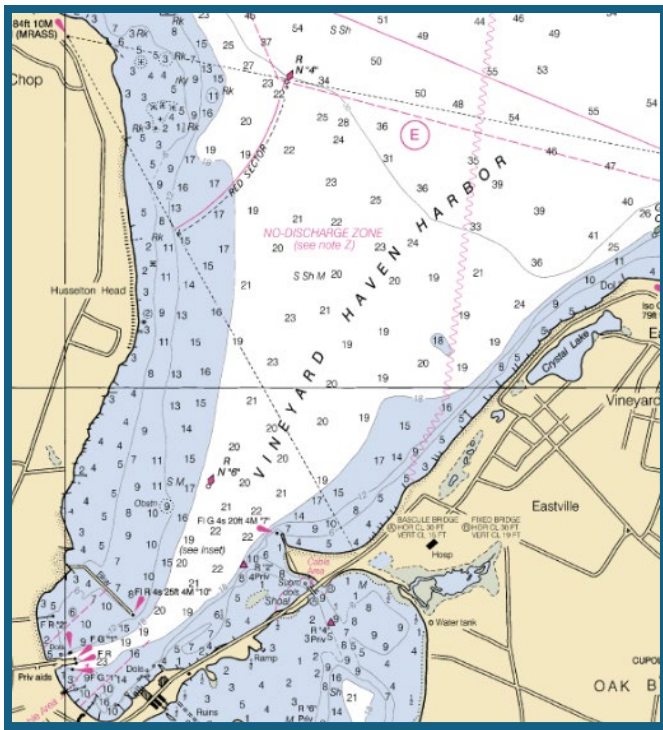
Good Reads:

The New York Yacht Club, *Records of the Annual Cruises, 1844-2019*, NYYC Library. John Rousmaniere,

The New York Yacht Club A History, 1844-2008, Maine: Sea point Books and Media, 2008.

John Parkinson, Jr., *The Bay and the Sound*, New York: Little, Brown, and Co., 1968.

**VINEYARD
HAVEN**



VINEYARD HAVEN, MA

Friday, August 1st

Harbor Master Gary Kovack VHF 9 or 69 508-696-4249 gkovack@tisburyma.gov

Harbor Regulations Holding tanks must be used. Slow, no wake zone in the harbor. Raft-ups of more than 3 vessels is prohibited. No catamarans permitted on moorings in the inner harbor.

Anchorage **Vineyard Haven Harbor Anchorage** 41° 27' 41.26", -70° 35' 41.69"
7-15' depth. Good holding in sand and mud. Exposed N through NE.

Lagoon Pond Anchorage 41° 27' 21.91", -70° 34' 56.45"
7-9' depth. Good holding in mud. Protection from strong northeasterlies.
Approach through Lagoon Pond Bridge, 18' clearance. Bridge opens on signal 0815-0845, 1015-1100, 1515-1600, 1700-1745, 1930-2200.

Moorings/ Dockage **Vineyard Haven Marina** VHF 71 508-693-0720
Transient Slips: MAX LOA 200' / draft 12' / beam
Moorings: 21 Lat/ Long: N 41° 27.214' / W 070° 35.940'

Safe Harbor Vineyard Haven VHF 68 508-693-4174
(approach through Lagoon Pond Bridge)
Transient slips: MAX LOA 36' / draft 5.5' / beam 13' / height 12'
Moorings: MAX LOA 45' / draft 6' / height 17'
Lat/Long: 42.51955, -70.88959

Gannon & Benjamin Marine VHF 72 508-560-9052
10 Transient moorings in outer harbor. Book on Dockwa.

Marine Facilities **Vineyard Haven Launch Service** VHF 72 508-560-9052
\$4/ per person, per ride payable by cash or check only.

	Tisbury Wharf Company <i>Fuel, Diesel, Water, Ice</i>	VHF 9	508-693-9300
	Pump Out Services <i>Vineyard Haven Harbormaster</i>	VHF 9	508-669-4249
Provisions	Stop & Shop	50 Water St.	508-693-8339
	Waterside Market <i>Market, freshly baked goods, Café, breakfast & lunch take-out.</i>	82 Main St.	508-693-8899
Dining/ Activities	Black Dog Tavern <i>Local seafood tavern and cocktail bar.</i>	20 Beach St.	508-693-9223
	Garde East <i>Waterfront dining and cocktails.</i>	52 Beach Rd.	508-687-9926
	Beach Road <i>Locally sourced seafood & new American fare. Waterfront views.</i>	79 Beach Rd.	508-693-8582
	Lookout Tavern <i>Open waterfront dining, seafood, burgers, raw bar, cocktails.</i>	8 Seaview Ave.	508-696-9844
	El Barco Tacos x Tequilas <i>Specialty tacos, margaritas and patio seating.</i>	16 Union St.	508-684-5001
	Roxy Pool Bar <i>Poolside lounge seats, dining, frozen cocktails, beer & wine.</i>	131 N Water St.	508-627-3761
	Martha's Vineyard Museum <i>Historic buildings with exhibits on island history/culture.</i>	151 Lagoon Rd.	508-627-4441
	Martha's Bike Rentals	4 Lagoon Rd.	508-693-6593

CRUISE SCHEDULE & ACTIVITIES

Friday, August 1

0955

Course Signals – Squadron Run #4 from Marion to Vineyard Haven

1700

Gannon & Benjamin Marine Railway Reception

We are excited to announce that the [Gannon & Benjamin Marine Railway](#) will host a reception for all Cruise participants on Friday, August 1. This event will take place at their facility at 30 Beach Rd A at 1700. Fresh oysters and grillable foods will be provided and all are invited to 'Bring Your Own' beverages. This event is complimentary but guests are asked to RSVP via the [link](#) no later than Tuesday, July 29, so that our hosts can plan accordingly.

Saturday August 2

0830

Parade – See Sailing Instructions for more details

1055

Course Signals – Squadron Run #5 from Vineyard Haven to Newport

1900-2300

NYYC Summer White Party at Harbour Court

CRUISE DISBANDS

Historical Perspective and Interesting Facts

Provided by the Heritage Committee

This is a charming community well known to sailors. It serves as the main port of entry to Martha's Vineyard and has a vibrant cultural scene, beautiful harbor, and a rich maritime history. Wooden boat building is a celebrated craft, particularly through the work of Gannon and Benjamin Marine Railway. Another notable figure in the area is Ted Box, who builds wooden boats with the help of volunteers. The traditional craft fosters a sense of community year-round.

Gannon & Benjamin Marine Railway – STARTING A BOATYARD on MARTHA'S VINEYARD

The story begins as many do, with two passionate sailors, Nat Benjamin and Ross Gannon, working together to keep their vessels afloat in a harbor that lacked a facility for do-it-yourself boat owners. They shared a mutual appreciation for fine craftsmanship and elegant design. They also imagined their dream of having “their own” shipyard.

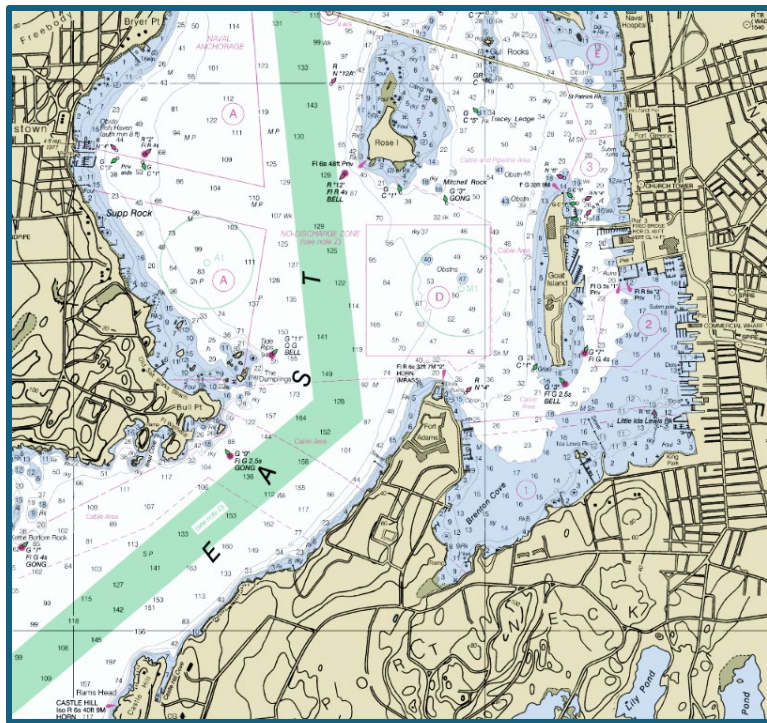
During the winter of 1978, Nat & Ross were working on a Vineyard 15 Ariel, a locally built sloop known for its successful racing history, that was crammed into a small shed behind a larger, decrepit vacant building on the Vineyard Haven waterfront. They mused to the owner that his property was “the only piece of waterfront suitable for our slipway.” Sadly, the owner has just signed a purchase and sale agreement with the McDonald's hamburger franchise. The local reaction was extraordinary. Soon the groundswell of opposition grew to a tidal wave and McDonalds retreated.



A few months later in 1980, an abutting landowner purchased the piece of land to add to their waterfront holdings and to everyone's surprise leased the prime slice of beachfront to Nat and Ross (sometimes referred to as the “hippie boatbuilders”). The Gannon & Benjamin Marine Railway was in business. A steady stream of new designs and restorations rolled down the rails as we gained credibility and skills. By October 1989, G&B had launched thirteen boats ranging from rowing skiffs to a 44' schooner and had repaired many old timers, among them the magnificent 72' yawl Zorra. Then the unthinkable happened. Late at night on October 17, 1989, a fire broke out in the shop. By the time the fire department arrived it was a raging inferno. With help from friends, Nat and Ross managed to save a small cutter but everything else was consumed.

But there were higher powers at play. The next morning, dozens of Vineyarders could be seen sifting through the rubble in search of tools and equipment that might be salvaged. Before the end of the day, a relief fund had been opened at the local bank, the manager of the Black Dog Restaurant offered to hold a benefit dinner, and a few days later, James Taylor and his siblings organized a Halloween concert to raise money for a new shop. The traditions of our maritime heritage, the solid work ethic, skills, and artistry that the boatyard represented were vanishing from waterfronts up and down the coast. The Vineyard would not let this one go. And the outpouring of affection forever bonded us to the land and the people of our island. On January 1, 1990, we moved into a new shop with a contract for a new boat and our future. Now, 45 years later, Nat, Ross, and their recent partner Brad Abbott, have built more than 85 new vessels and completed dozens of restorations. Gannon & Benjamin is a place where many may chase their dreams, find their space, and carry it on.

NEWPORT



NEWPORT, RI

Saturday, August 2nd

Harbormaster Stephen Land **VHF 16** 401-845-5818

Harbor Regulations Speed limit 5 MPH. Zero discharge; holding tanks must be used. Rafting on a mooring is allowed only if it does not interfere with adjacent moorings or anchorages. Boats in a raft shall be manned at all times. Anchoring is permitted at the direction of the Harbor Master within the two designated anchorage areas.

Harbour Court

Dock space

Available for short-term landings to pick up passengers, fill water tanks or to use the pump-out. Please radio in advance, VHF 74.

Ice

Available on honor system (both cube & block). Machine is located within the West Wing; There is a brown fenced area at foot of stone pier on the base of the hill. Place completed ice chit sheets in mailbox, beside the machine.

Trash Barrels

Located beside the ice machine, within the brown fence area.

Pump-out facility

Pedestal is located on the west side of pier, opposite floating dock.

Marine Services contact info

(divers, mechanics, sail repair, etc.) Available at the dock office.

Showers and heads

Located at Sailing Center, additional heads at Boathouse.

HC Dining

Bolero Grill *Members and accompanied guests only, reservations required.*

CALL: 401-846-1000 **EMAIL:** dininghc@nyyc.org

Open 7 days a week

- **Bar** 1200 -2300
- **Breakfast** 0730 – 1000
- **Lunch** 1200 - 1500
- **Dinner** 1730 - 2100

Launch

NYYC Launch VHF 74

Navette operates on call from Harbour Court. Anyone under the age of 13 must wear a life jacket while on the launch. Loaner life jackets are available in dock office. Launch service area includes any vessels south of main channel from Brenton Cove to the Spindle. To maintain timely pickup, service does not include the main harbor or downtown Newport.

Oldport Marine VHF 68

Hourly service beyond Brenton Cove. Hail before half past any hour. Runs later into the evening than Navette.

CRUISE SCHEDULE & ACTIVITIES

1055 Course Signals – Squadron Run #5 from Vineyard Haven to Newport

1900 NYYC Summer White Party at Harbour Court

Cruise Disbands

Historical Perspective and Interesting Facts

Provided by the Heritage Committee

This is a passage of approximately 32 NM, which means 5-7 hours depending on tides, winds, type of boat, etc. The squadron will sail west through Vineyard Sound, passing near the Elizabeth Islands and Buzzards Bay before entering Narragansett Bay. It is important to avoid adverse conditions near Buzzards Bay Tower. The entrance to Narragansett Bay is super familiar but always glorious.

The party awaits!

**MEDICAL
ADVISORY**

MEDICAL ADVISORY

Fleet Surgeon
Jay Schachne, MD

Dr Jay Schachne will be aboard *Satin Doll*. His cell number is (774) 644-3031 and he will be monitoring the Race Committee designated VHF channel for the duration of the cruise. The Medical Advisory Committee will share 'on call' coverage for first call medical response on the cruise as follows:

Saturday, July 26	Jay Schachne	(774) 644-3031
Sunday, July 27	Daniel Pesch	(847) 997-5277
Monday, July 28	Caner Dinlenc	(646) 295-0593
Tuesday, July 29	Jay Schachne	(774) 644-3031
Wednesday, July 30	Daniel Pesch	(847) 997-5277
Thursday, July 31	Caner Dinlenc	(646) 295-0593
Friday, August 1	Jay Schachne	(774) 644-3031
Saturday, August 2	Daniel Pesch	(847) 997-5277

NOTE: Medical personnel who will be on the Cruise, especially physicians, EMT's and any other qualified ancillary personnel, are asked to notify us of their availability, their location, and their special skills by emailing Lynn Lynch at the Sailing Office: sailingoffice@nyyc.org

1. Each Captain is strongly advised to inventory the health problems of their crew and guests. The Fleet Surgeon should be notified, in writing and in advance, of significant health problems. If there is a reasonable question as to whether someone should participate in the cruise, discussions should be held beforehand.
2. Each Captain should be aware of medications and medical equipment supplies used by crewmembers and guests. All cruise participants should bring an adequate supply of personal medications and are strongly advised to provide the Captain with a written sealed list.
3. Evacuation of sick or injured persons while at sea should be arranged by contacting the nearest Coast Guard Station.
4. The avoidance of potentially significant injuries by the application of simple rules and common sense is the responsibility of each Captain.
5. Captains should consider requiring the wearing of a U.S.C.G. approved PFD by all crewmembers working on deck, especially in rough weather.
6. Prevention of dehydration and sun exposure illness is important, as well as adequate protection of the head, feet and hands while sailing.
7. Following are guidelines for the care of common emergencies to be used at the discretion of the Captain.

MEDICAL SERVICES

MARBLEHEAD

Nearest USCG Station	Nearest Hospital ER	Nearest Urgent Care
Gloucester	Salem Hospital	AFC Swampscott
17 Harbor Loop, Gloucester (978) 283-0705	81 Highland Ave, Salem (978) 741-1200	450 Paradise Rd, Swampscott (781) 691-9366

SCITUATE

Nearest USCG Station	Nearest Hospital ER	Nearest Urgent Care
Scituate	South Shore Hospital	CareWell Urgent Care
90 Cole Parkway, Scituate (781) 545-3800	55 Fogg Rd, South Weymouth (781) 624-8000	42 Washington St, Norwell (781) 421-3503

DUXBURY

Nearest USCG Station	Nearest Hospital ER	Nearest Urgent Care
Cape Cod Canal	Beth Isreal Deaconess Plymouth	Health Express
1 Coast Guard Rd, Sandwich (508) 888-0020	275 Sandwich St, Plymouth (508) 746-2000	182 Summer St, Kingston (781) 626-5340

PROVINCETOWN

Nearest USCG Station	Nearest Hospital ER	Nearest Urgent Care
Provincetown	Cape Cod Hospital	Outer Cape Health
125 Commercial St, Provincetown (508) 487-0077	27 Park St, Hyannis (508) 771-1800	49 Harry Kemp Way, Provincetown (508) 487-9395

MARION

Nearest USCG Station	Nearest Hospital ER	Nearest Urgent Care
Wood's Hole	Tobey Hospital	Southcoast Health UC
30 Littler Harbor Rd, Woods Hole (508) 457-3211	43 High St, Wareham (508) 295-0880	2421 Cranberry Hwy, Wareham (508) 273-1810

VINEYARD HAVEN

Nearest USCG Station	Nearest Hospital ER	Nearest Urgent Care
Wood's Hole	Martha's Vineyard Hospital	
30 Littler Harbor Rd, Woods Hole (508) 457-3211	1 Hospital Rd, Oak Bluffs (508) 693-0410	



NEW YORK YACHT CLUB
July 26 – August 2 • 2025

**Emergency Plan with
Medical and Communications Procedures**

The purpose of this document is to provide an outline of steps to be taken in the event of an emergency or crisis within the time frame of the New York Yacht Club 169th Annual Cruise

DETERMINING AN EMERGENCY/CRISIS

Level 1: Situation that Threatens Life of Crew/Participants and Requires Immediate Action by Outside Services: Examples include a sinking boat, man overboard, cardio-respiratory arrest, major trauma, coma, or unconsciousness. (Note: can be a competitor, spectator or race committee member)

Level 2: Major Damage to Boat that Threatens Ability to Stay Afloat or Trauma Requiring Prompt Transfer: This includes situations that require immediate medical attention, but are not life threatening, such as impaired mobility or a person unable to perform normal functions.

Level 3: Non-Urgent Injury or Damage that Does Not Require Immediate Outside Assistance
While the situation may not require outside or immediate assistance, the situation should be continually monitored as the emergency may increase or decrease in its severity as more information is received.

PROCEDURES FOR DEALING WITH A LEVEL 1 OR LEVEL 2 EMERGENCY/CRISIS

The priority should always be to contact the appropriate emergency services via Channel 16 or 911. The Fleet Surgeon, Dr. Jay Schachne, will be monitoring emergency channels. The following information should be provided:

- Nature of emergency
- Name of boat, description of boat and location with Latitude/Longitude, if possible
- Name and date of birth of casualty
- Your Cell phone number
- Hoist code flag V (*I require assistance*)



If there is any doubt as to the level of the potential crisis involved, the Fleet Surgeon and/or Principal Race Officer should take the more serious interpretation of the situation. On receiving notification of an incident that may lead to an emergency, the Fleet Surgeon should do the following:

- 1) Deal with the emergency by notifying and/or confirming that the appropriate emergency services have been contacted. They should then continue to monitor the situation.
- 2) In the event of serious illness or injury (Level 1) requiring expeditious evacuation of the patient, the following steps should be followed:
 - a. Notify US Coast Guard on Ch 16 VHF to request CG assistance if evacuation is required.
 - b. If the patient can be safely transported ashore by the boat, notify the closest location/dock and the local rescue services. Give ETA.

PROCEDURES FOR DEALING WITH A LEVEL 3 NON-URGENT EMERGENCY

While the situation may not require outside or immediate assistance, the situation should be continually monitored. For a Level 3 Non-Urgent Emergency, Fleet Surgeon Dr Jay Schachne, aboard the yacht ***Stain Doll***, should be contacted by mobile (774) 644-3031 or VHF 72.

The following information should be provided:

- Nature of non-urgent emergency
- Name of boat, description of boat and location with Latitude/Longitude, if possible
- Name and date of birth of casualty
- Cell phone number of caller

GUIDELINES FOR CARE OF COMMON MEDICAL EMERGENCIES AT SEA



1. Bleeding from laceration.
 - raise wound above level of heart
 - clean with antiseptic
 - apply sterile dressing pad and hold firmly in place for 10 min (no peaking)
 - secure with bandage
 - check circulation after 10 min.
 - consider tetanus booster
 - if bleeding has not stopped in 10 minutes CALL FOR HELP

2. Internal bleeding from fracture or crush injury.
 - Watch for signs of shock.
 - cold clammy/rapid weak pulse/shallow rapid breathing
 - increased thirst/confusion/dizziness

 - Treatment starts with a CALL FOR HELP
 - lie the victim down, raise their legs and loosen clothing
 - cover with blanket
 - avoid drinking or eating

3. Severe burn
 - immerse in cold water for 15 min.
 - gently remove loose clothing. be careful when clothing is stuck to skin
 - apply sterile non-stick dressings that are not too tight
 - elevate affected limb
 - if the burn is near the face or hands, CALL FOR HELP

4. Sunburn
 - apply lukewarm water
 - apply calamine lotion
 - after sun lotion / aloe
 - seat victim in a shady place
 - make sure victim is well hydrated

5. Head or neck injury (ie boom) CALL FOR HELP
 - stabilize neck and head
 - absolutely no unnecessary moving until help arrives
 - assess for level of consciousness
 - check airway

6. Cardiac arrest CALL FOR HELP
 - begin CPR 100-120/min sternal chest compression
 - call for AED and continue CPR
 - if able after 30 compressions give 2 breaths and continue

**PROTOCOL
AND
SEAMANSHIP**

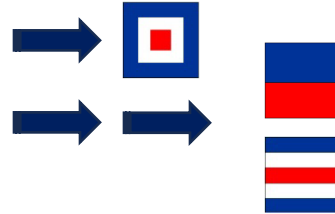
**169th NYYC ANNUAL CRUISE
YACHT FLAG ROUTINE QUICK REFERENCE**



Yachts Joining or Departing the Cruise

Yachts Joining: notify the Race Committee on VHF Channel 72

Yachts Departing: notify the Race Committee and hoist Flag "W"



At the conclusion of the Cruise: EC: "Squadron disbanded"



Colors

- The Squadron honors colors by displaying the **US Ensign at 0800 with cannon fire from the Flagship (except on Sundays).**
- The Squadron honors colors by lowering **the US Ensign with cannon fire at sunset (except on Sundays).**
- Colors are to be struck if leaving the yacht unattended before sunset.

Burgee, Ensign and Union Jack

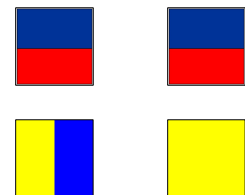
- The NYYC burgee is flown at a masthead, ***never from a spreader.***
- Flag Officers shall display their flag day and night in the place of the burgee.
- The Ensign is struck when racing.
- **Union Jack:** It is customary for yachts 40 ft LOA and longer to display the Union Jack with Colors on Sunday, National holidays and when dressed ship. Power yachts from the bow staff in lieu of the burgee; sailing yachts suspended between the forestay and the deck. The Union Jack is only flown when docked or anchored – never when underway.



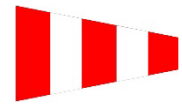
Harbor Starts

The Flagship shall signal "Harbor Start" by:

- One gun will be fired to call attention to the signal for getting underway.
- Displaying signals:
 - EK "Squadron will get underway for ____."
 - EQ "Squadron proceed at will."
- Followed by the signals for the destination (see below)



- Yachts shall acknowledge by displaying the **Answering Pennant (AP)** at the starboard rigging. *“All vessels to which Signals are addressed shall hoist the Code (Answering) pennant partially (at the dip) as soon as each Signal is observed and full up (two-blocked) when such signal is understood.”*



Signal Codes for Destinations (2006 Yearbook)

- Scituate: *“RB”*
- Duxbury: *“SU”*
- Provincetown: *“TE”*
- Marion: *“RM”*
- Vineyard Haven: *“UP”*
- Newport: *“SF”*



Astor Cup

- The Astor Cup Race will be held Monday, July 28 between Scituate and Duxbury. Signal Codes for the Astor Cup are *“HL”*

Astor Cup



Parades

Please refer to the Yacht Routine of the New York Yacht Club section of the Blue Book (pages 397-410) for additional protocol information.

When the harbor start includes a parade, the procedure for leaving port shall be:

- yachts of the Flag Officers in order of rank,
- followed by the Race Committee,
- followed by yachts of the Squadron.

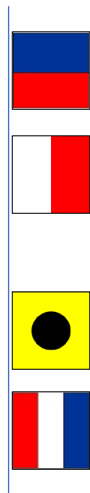
NOTE: Yachts should maintain adequate space for safety and maneuvering in narrow channels. Members with tenders are asked to ensure that their tenders also follow this routine as well as staying clear of racecourses and the fleet in general.

Dress Ship Routine – Lay Day

- Dress ship will occur during the Lay Day of the Annual Cruise
- **Signal Code from Flagship: EH IT** “Squadron will dress ship at colors on Wednesday.”
- Recommended sequence of alternating letter flags and numeral pennants for a harmonious color pattern: “Starting from forward: AB2, UJ1, KE3, GH6, IV5, FL4, DM7, PO Third Repeater, RN First Repeater, ST Zero, CX9, WQ8, ZY Second Repeater.”

NOTE:

- (1) The hoist goes from water's edge over the stem, to water's edge over the stern.
- (2) Dress ship promptly at 0800 and remove at evening colors
- (3) You may not move your yacht while she is dressed



Night Signals

When at anchor the Flagships shall display, from sunset to sunrise, two lights arranged vertically to starboard and abreast of the mainmast at the height of the lower main spreader. Such lights shall be as follows: Commodore – blue; Vice Commodore – red; Rear Commodore – white, Race Committee – green over red over green; Fleet Surgeon – green over green.

Marine Sanitation and Pollution

Captains are reminded of their responsibility to follow federal laws on pollution and marine sanitation. All of the harbors and waters we will be visiting are zero discharge, and individual owners should make whatever modifications are necessary so as not to pollute local harbors. Please also minimize the use of single-use plastic and dispose of trash in proper receptacles.

During the Cruise, the potential negative impact of a large fleet such as ours on small harbors and anchorages cannot be over-emphasized.

Private Signals

Members are encouraged to display their Private Signal as described in the Yacht Routine section of the Blue Book (page 398). The Club has begun a process to document Private Signals and an initial booklet is included in your Cruise materials.



**NEW YORK YACHT CLUB
ANNUAL CRUISE 2025**

**SEAMANSHIP COMMITTEE
RECOMMENDATIONS & RESOURCES**

NEW YORK YACHT CLUB

169th ANNUAL CRUISE

July 26-August 2, 2025

SEAMANSHIP COMMITTEE REMINDERS

1. PLAN YOUR CRUISE:

- A. Review the Race Documents and Notices on the NYYC website to ensure understanding of applicable requirements under which entrant is participating. NYYC Annual Cruise Website: <https://nyyc.org/group/pages/169th-annual-cruise>
- B. Review the Cruise Book for the overnight anchorages and potential racecourses. The Seamanship Committee anticipates that all vessels on the Cruise will have shipboard electronic navigation equipment. Captains and crew are urged to familiarize themselves with their vessel's navigation equipment prior to the Cruise. Captains are also reminded that electronic navigation is no substitute for maintaining a proper visual lookout and should be backed up by proper use of paper charts. The U. S. Government no longer prints paper copies of its raster nautical charts. However, NOAA provides digital images of its raster charts to [NOAA certified chart agents](#), from whom you may purchase NOAA paper nautical charts.
- C. To access charts online, see:
<https://charts.noaa.gov/InteractiveCatalog/nrnc.shtml>
- Also, be familiar with port-specific details, such as are contained in the applicable Waterway Guide or Maptech Embassy Guide.
- D. Review **Local Notice to Mariners (LNM) for District 1** for current advisories and other information pertinent to navigation and cruising in the waters of the Cruise. <https://www.navcen.uscg.gov/local-notices-to-mariners?district=1+0&subdistrict=n>

NOTE: To receive weekly LNM's see:
https://public.govdelivery.com/accounts/USDHSCG/subscriber/new?topic_id=USDHSCG_65

Reference to the 2025 Lightlist may also be useful in reviewing the LNM's. It is available online at: <https://www.navcen.uscg.gov/light-lists>

E. Review a copy of the Coast Pilot for local information:
<https://nauticalcharts.noaa.gov/publications/coast-pilot/index.html>

F. Check local tides and currents:
<https://tidesandcurrents.noaa.gov/map/index.html?region=Rhode%20Island>

There are also many commercial tide and current programs for tablets and smart phones. For example, [Tides Near Me](#) is a good app for iPhone. Tide and current information are also available through INAVX and NAVIONICS (see below).

G. Backup Navigation Information:

As a backup to your backups, become acquainted with one of the numerous navigation sites on the internet and applications for iPad and Android tablets such as:

INAV X- available for iPad and Android. Contains all US charts, information on tides and several helpful waypoint and routing tools. NOTE: Charts must be updated through the app on a regular basis. <http://inavx.com/>

NAVIONICS Boating app for mobile devices. In addition to cartography, the app provides tide, current, wind, and private ATON data as well as useful information on attractions ashore.

GARMIN ACTIVE CAPTAIN. <https://activecaptain.garmin.com/> This website contains useful information on harbors, navigation issues, and shore facilities along our cruise route. NB: It is supplemented and updated regularly by unverified comments of cruising sailors. The ActiveCaptain mobile app creates a connection between your mobile device and a compatible Garmin chartplotter, charts, maps, and the boating community.

USHARBORS. www.usharbors.com. A website providing tides, weather, and local knowledge for many of the harbors visited on the cruise.

2. GENERAL COMMENTS

A. Our cruising itinerary for 2025 necessitates that all captains are reminded of the broad parameters of Maritime Domain Awareness as put forth by DHS. In summary, when in the vicinity of naval vessels, commercial vessels, commercial offshore structures, such as LNG buoys, data platforms, *etc.* and in the presence of large marine mammals, such as whales, maintain a **500-yard separation** when maneuvering.

- B. While not as abundant as in the waters off Maine, occasional lobster pots may be encountered. Be aware that pots may be marked with a toggle (two connected floats); do not pass between the float and its toggle.

3. SAFETY

A. **Brief your crew daily on safety procedures aboard.**

- Review with crew the location of safety gear (*e.g.*, fire extinguishers, life vests, MOB throw, first aid kit, *etc.*) and post a safety gear stowage location chart that is prominently visible for reference by all crew.
- ***Conduct a MOB drill for the entire crew before your first day departure.***
- Review use of AIS and personal AIS beacons, lifejackets and tethers, and communications equipment, including use of DSC.
- Remember to use a main boom preventer on Squadron Runs.
- Use skin protection from sun.
- Hydrate frequently.

- B. **Wear life vests, especially when conditions dictate. Please recall that most inflatable life vests are only effective if worn.** They are NOT inherently buoyant so cannot perform as a throwable device (Also, they are awkward to put on in the water, especially if under duress); they are not shock rated, so they can malfunction if the user falls from a fast-moving boat. Finally, they are not authorized for use by boaters under the age of sixteen. Children under the age of 13 MUST wear an inherently buoyant PFD when on deck.

- C. The US Coast Guard recommends that you always wear a life jacket while underway, noting that the best PFD for you is the one you will wear. The 2024 USCG Boating Statistics report stated 76% of all fatal boating accident victims drowned, with 87% of those victims were not wearing a life jacket. The report further states alcohol use was the leading known contributing factor in fatal boating accidents; where the primary cause was known, it was listed as the leading factor in 20% of deaths. Operator inattention, improper lookout, operator inexperience, machinery failure, and navigation rules ranked as the top five primary contributing factors in accidents. Where data was known, navigation rules violations were a contributing factor in 55% of incidents, 34% of deaths, and 63% of injuries. ***DO NOT CONTRIBUTE to the 2025 statistics.***

- D. **Personal Locator Beacons (PLBs)** are small devices, typically fitted on a lifejacket, that send a distress message, including GPS position, via satellite to the coast guard operations. PLBs work in a similar manner to EPIRBs, but require manual activation and have a shorter operational battery life (usually 24 hours). The PLB must be registered to the person wearing it; the EPIRB

is registered to the vessel to which it is attached. PLBs are registered by NOAA at no charge under Federal Regulation. For more information: www.beaconregistration.noaa.gov

- E. AIS Man Overboard.** Unlike a personal locator beacon, which signals orbiting search and rescue satellites, an AIS enabled MOB device sends an alert message within seconds to all local vessels with an AIS receiver and/or AIS-enabled plotter, and the DSC alarm on your vessel's VHF can also be signaled. (NB: *Most modern AIS plotters and DSC VHF comply with the standards required to receive MOB transmissions. We recommend, however, that you check compatibility with your equipment manufacturer, especially if the equipment is old.*)

Popular AIS MOB products include:

- [Ocean Signal MOB1](#)
- [ACR ARTEX - AISLink MOB](#)
- [McMurdo SmartFind S10](#)

- F. PLB/AIS Combined.** The new [ACR ResQLink AIS Personal Locator Beacon](#) contains both satellite and local transponders. The combination of 406 MHz and AIS distress messaging pairs both global and local rescue into one beacon for the first time, extending access to the Coast Guard and Search and Rescue as well as commercial and recreational boats in the area. Alerting local AIS equipped boats in your vicinity allows for additional vessels to respond directly to the digital mayday with your location.

4. MEDICAL:

Review the Medical Advisory available in the Cruise Book and on the NYYC Annual Cruise Website: <https://nyyc.org/group/pages/169th-annual-cruise>

5. WEATHER:

In addition to monitoring NOAA broadcasts on VHF channels WX2 and WX3, those with internet access have several resources.

- National Weather Service offers marine broadcasts and warnings for waters of the cruise on their site, <https://www.weather.gov/marine/>
- Aviation forecasts also offer an excellent synopsis on <http://www.usairnet.com/cgi-bin/launch/code.cgi?Submit=Go&state=MA>
- www.passageweather.com is another free website, simple format.
- Coastal Water Temperature Guide may be helpful: <https://www.ncei.noaa.gov/access/coastal-water-temperature-guide/>
- NOTE: The mobile.weather.gov website was decommissioned in June 2024

6. ANCHORING

- Entering anchorage, note other boats' positions. Respect vessels that arrived before you; they have rights.
- In open areas, put at least a “pound on the ground” for each foot LOA.
- If using “modern, high efficiency” anchors, know manufacturer's recommendation. If in doubt, use next size up!
- Make sure you have an appropriate length chain lead on your nylon rode.
- If all chain rode, use a snubber line (nylon) to absorb wave shock and to quiet the boat.

7. BREAKDOWNS AND GROUNDINGS

Contact US COAST GUARD:

- on Channel 16, or
- First District Command Center Number: (617) 223-8555 - For maritime emergency use only
- Sector Southeastern New England
 - Primary: 206-815-6718
 - Emergency: 866-819-9128

The following commercial companies may be of assistance. (Neither the Seamanship Cmte., nor any other NYYC representative has contacted these firms.):

- SEATOW: 800-4-SEATOW or 800-473-2869
- TOWBOAT US: 24 Hour Dispatch Center (800) 391-4869

It is advisable to have a copy of Lloyd's Open Form

<https://www.lloyds.com/resources-and-services/lloyds-agency/salvage-arbitration-branch/lloyds-open-form-lof>

[BoatUS Open Form Salvage Agreement](#)

NOTE: Sea Tow has Automated Radio Check over Channels 24 to 28 and 84. For details: <http://www.seatow.com/boating-safety/automated-radio-checks>

8. AUTOMATIC IDENTIFICATION SYSTEM (AIS)

Boost your situational awareness even if you do not have an AIS receiver. Two websites: **SHIPFINDER** <http://www.shipfinder.com/> and **MARINETRAFFIC** <https://www.marinetraffic.com/> can be useful. There are also applications available for tablets and smartphones from these sites.

9. ADDITIONAL LINKS

- Aids to Navigation:
http://wow.uscgaux.info/Uploads_wowII/130-05-06/usaidthnavigationssystembooklet23dec03.pdf
- Navigation projects conducted by the US Army Corps of Engineers:
 - In Massachusetts:
<https://www.nae.usace.army.mil/Missions/Navigation/Massachusetts-Projects/>
 - In Rhode Island:
<https://www.nae.usace.army.mil/Missions/Navigation/Rhode-Island-Projects/>
- NOAA Tidal Currents Predictions:
<https://tidesandcurrents.noaa.gov/noaacurrents/stations?g=456>

GUEST LIST

**169th Annual Cruise
Guest List**

Commodore L. Jay Cross

Mrs. Devon G. Cross
Ms. Hadley F. Cross
Mr. Ciaran J. Breslin
Ms. Avery C. Cross
Fleet Captain Steven A. Wolff
Ms. Gail L. Wolff
Mr. Carlos Rivera
Ms. Sophie Spies

Foggy - Frers 74
Hold Fast - Grand Banks 54

Vice Commodore Clare Harrington

Rear Commodore Peter J. Cummiskey
Mrs. Alexandra Cummiskey
Edward Rockwell Cesare
Anthony D. Root
Colin Chase

Magic - Custom Empacher 70

Fleet Surgeon Jay Schachne, MD
Captain Brad Haverly

Mrs. Andrea Schachne
Mr. Alan Silk
Mrs. Ramona Silk
Mr. Karl Otterbach
Ms. Paula Collela
Ms. Elizabeth Swain
Mr. Ian Schachne
Mrs. Missy Schachne
Dr. Jeffrey Horowitz
Ms. Elana Schachne
Mr. Matt Amaral
Mr. Gary Leiter
Dr. Denise Glickman
Mr. Tony August
Mr. Jay Kay

Satin Doll - Sabre 38 Mark 1
Sea Owl - Azimut 87

Principal Race Officer Forrest Williams

Jessica Williams
Peggy Hersam
Michael Shea
Pam Murrin
Ned Jones

Starlight - Derektor 106

Captain Christian Antoni

Karin Antoni
Friederike Antoni
Charlotte Antoni

Ardea - Hanse 46

Captain Robert Aron
Captain David Tingle

Mrs. Norka Aron
Ms. Debi Dove
Robert Candelario

Grey Goose - Pacific Mariner 70

Captain Weatherly Barnard Dorris Captain Richard Dorris		<i>Huntress</i> - 1940 Hunt Custom 37.5
Captain Eugene J. Berardi Jr. Captain Edward Lahey	Mrs. Lillian Gay Berardi	<i>Mach Buster</i> - Little Harbor 70
Captain David Brodsky	Mr. Matt Ward Mr. Jeffrey Sprung Mr. Mike Nadeau Mr. Will Cassani Dr. Matt Asaro Dr. Michael Reuter Mr. Robert Sprung Dr David Cunningham	<i>Odyssey</i> - X50
Captain Matt Brooks	Kathryn Kimball Kevin Miller Pamela Healy Craig Healy Belinda Shepard Matt Wachowicz Miles Bailey Eric Chowanski Nathan Frizzell	<i>Dorade</i> - S&S Yawl 52.5 <i>Serena</i> - Carlo Riva 74
Captain Christopher Burnham	Mrs. Courtney Burnham Mr. James A Baker, IV Hon. Meredith A Baker	<i>Argyll</i> - Hinckley SW 48
Captain David Bush-Brown	Mary Bush-Brown Michael Chapman	<i>Kokua</i> - Hinckley SW 42
Captain Karyn Campbell	Alex Booth Ben Capbell Alexx Naworcki	<i>Off-Piste</i> - Beneteau 48
Captain Jason Carr Captain D'Arcy Carr	Campbell Carr	<i>Galleons Lap</i> - Alden 40
Captain Beverley Crump Captain Cyane Crump	Susan Crump	<i>Rappahannock</i> - Legacy 42
Commodore Christopher Culver	Mrs. Deirdre Culver Mr. Charles Finelli Mrs. Rebecca Finelli Mr. Robert Moran Mrs. Jennifer Moran	<i>Cetacea</i> - Ferretti - Dolphin 74

Captain David Cutner	Craig Hugelmeyer Bill Leeds John Nusbaum Tom Tobin	<i>Alix</i> - J/40
Captain Douglas Dahl	Commander Lewis S. Gray, USNR Mr. Richard P. Spencer, II	<i>Aliquando</i> - Hanse 388
Captain Simon Davidson	Mrs. Hillary Davidson Commodore George Isdale Mrs. Geer Isdale Mrs. Kristal Dockery	<i>PB Fifty-Five</i> - Palm Beach 62
Captain Caner Dinlenc Captain John Valteris	Heather Valteris Kerry Dunn	<i>Pendragon II</i> - Fountaine-Pajot Tanna 47
Captain Steven R. Director	Ms. Leslie Hayes Karl Grunewald, MD Mr. Dave Lauser	<i>StoweAway</i> - Sabre 426
Captain L. Scott Frantz	Stephen Westerberg Kyle Glowachy Jade Lagestee	<i>Ticonderoga</i> - Herreshoff Ketch 85
Captain Robert Fye	Mrs. Mary-Louise S. Howard Alexander S. M. Fye, MD William N. Hubbard, IV Jessica Fye Hubbard Weatherly S. M. Hubbard (age 5) William N. Hubbard V	<i>Perseverance</i> - Beneteau Oceanis 41
Captain Laurence Golding Captain Janet Grapengeter	Ms. Cynthia Golding Mr. Michael Rudnick	<i>Enterprise</i> - Beneteau Oceanis
Captain David Guernsey Jr. Captain David Guernsey III	Susan Guernsey Elizabeth Guernsey Justin Huxol	<i>Brilliant</i> - Sabre 40
Captain John Hardesty	Krissy Hardesty Philip Schutts Heidi Schutts Donovan Williamson Amy Williamson	<i>Sur L'eau</i> - Privilege 745
Captain William Ingram	Jennifer Ingram	<i>Saline</i> - Hunt Harrier 36.5

Captain Eric Irwin Captain Mary Martin		<i>Minerva</i> - Sabre 426
Captain William Jayson	Anne Jayson Patty Jayson Sally McGowan	<i>Pride II</i> - Hunt Custom 57
Captain Edward Kane	Marty Wallace	<i>Bolero</i> - 1949 Custom S&S 73.6
Captain Peter Kellogg Captain Austin Fragomen	Cynn timer Kellogg Henry Colie Bill deRouville Gwen Fragomen John Reid Whitney Reid Mack Totman Will Vanwhy Dick Williams Peggy Williams Captain Rob Williams Susan Williams Beck Collins Chip Hillyer	<i>Coastal Queen</i> - Buy Boat 65 <i>Silent Maid</i> - Cat Boat 33
Captain Amanda Kendrick Captain June Kendrick	Christina Besheer	<i>Palantir 5</i> - J/44
Captain Alan L. McKinnon Captain Peter O. Frisch	Mr. T. Clarke Smith, III Mr. Stanly T. F. Schreyer	<i>Trilogy</i> - Swan 53
Commodore Chip Loomis Captain Laurretta Bruno	Liz Gray	<i>Gem</i> - Vicem 64
Captain Sam Loomis	Chadwick E. Dickison William Loomis Virginia Loomis Caleb Pifer Jordan M. Rosenlicht Meghan B. Stasz	<i>Blue Peter</i> - Alfred Mylne Cutter 65
Commodore Philip Lotz	Wendy Lotz Dawn Darling Bill Darling	<i>Eudora</i> - J/160
Captain Donald Macdonald Captain Nisha Inalsingh	Marc Galligan Millie Galligan	<i>Here We Go</i> - Sabre 52 Flybridge

Captain Holt Massey	Sandra Massey Mark King Judith King	<i>Stingray</i> - Custom Ray Hunt 56
Captain Michael McAllister	Robyn Butler Ralf Steitz Jamie Gross	<i>Warhorse</i> - Nordhavn 68
Captain Andrew McLean Captain Jennifer McLean		<i>Alizé</i> - X-Yachts 4.0 40
Captain Ned Nielsen Captain Stephen Fallon	Ms. Sally Nielsen Ms. Julie Moore Mr. Ted Moore Ms. Joy Wade Mr. James Wade Ms. Jenny Kottler Mr. Robert Kottler	<i>Temptation</i> - Palmer Johnson 123
Captain Peter Noonan Captain Gordon Curtis	Peggy Noonan Cate Curtis David Johnson Alice Johnson Matt Schryver Jay Schryver Kendall Raye Kuczek Noah Denison Rufus VanGruisen	<i>Defiance</i> - Swan 56 <i>Lexington</i> - Horizon 85
Captain Jed Pearsall Captain William Doyle	Mr. Peter Haliburton	<i>Frolic</i> - Luders Navy Yawl 44
Captain Dan Pesch Captain Ellen Pesch		<i>Eider</i> - Hinckley S'ouwester '42
Captain Eric Ploumis	Mr. Bart Littlefield Mr. Chris Grinnell Mr. Gard Holby Mr. Barrett Holby	<i>J-108</i> - J-108
Captain Cary St. Onge Captain Susan St. Onge		<i>Falcon 2000</i> - Cookson 79
Captain Greig Todd	Russell Pagliughi	<i>Sandpiper</i> - Grand Banks 36
Captain Beth van der Eems	Mr. Michael Geagan	<i>Osprey</i> - Alerion Express 38
Captain Nick Voulgaris	Mr. Michael Schiavone Mr. Luke O'Keefe	<i>Scout</i> - Alden 58

Captain Gary Vogel

Shelley Vogel
Allie Vogel
Brendan Rogers
Brigid Rogers
Grant Vogel

Remedy - Swan 58

Captain Thomas Whidden
Captain Betsy Whidden

Mr. Austin Herborn

NorthLight - Grand Banks 87

Commodore Paul Zabetakis
Captain Alex Clegg

Eric T Johnson
Catherine Cotell
William Rusconi
Megan Rusconi
Rob Brodsky
Stephen Poirier
Mark Murphy
Peter Cronin
Francis Donahoe

Impetuous - Swan 42

Magic Bus - Simonis 54

Captain Mike Zupon

Lorrie Zupon
John Gregg
Gregg Takata
Mike Rushmore

Dragonfly - Eastbay 47FB

**RACE
DOCUMENTS**



NEW YORK YACHT CLUB 169th ANNUAL CRUISE

July 26-August 2, 2025

NOTICE OF RACE

The Organizing Authority (OA) is the New York Yacht Club (NYYC). The Annual Cruise website is on the member side of the NYYC website at <https://nyyc.org/group/pages/169th-annual-cruise>.

1 RULES AND CLASSES

- 1.1 The Annual Cruise will be governed by the rules as defined in *The Racing Rules of Sailing* (RRS). In addition, the NYYC By-Laws and Yacht Routine will apply.
- 1.2 **ORC Spinnaker and Non-spinnaker:** The current ORC Rules shall apply to yachts racing under ORC and ORC Non-spinnaker. Yachts with ORC International and ORC Club certificates will be scored together. More information can be found at <https://nyyc.org/group/pages/orc>.
- a) **ORC Spinnaker Class:** Children who have not yet turned 16 on the last day of racing will not count against the crew limit. This changes ORC Rule 200.1.
- b) **ORC Non-spinnaker Class:** The following changes shall apply to yachts competing in ORC Non-spinnaker classes:
- The allowable crew on board while racing is limited to the number of berths.
 - Children who have not yet turned 16 on the last day of racing will not count against the crew limit. There is no weight limit. This changes ORC Rule 200.1.
- c) **ORC Double-handed Class**
- If there are six or more entries they may be placed in their own class or dual-scored within their existing class.
- d) **ORC All Classes:** ORC Rule 201.2 is deleted for all ORC classes.
- 1.3 **Cruising Rule:** The current NYYC Cruising Rule (NYYC CR) shall apply to yachts racing under NYYC CR. The NYYC CR is a formula-based rating rule that uses owner-furnished measurement data to rate heavier displacement cruising yachts. The complete formula and class rules can be found at: <https://nyyc.org/group/pages/nyyc-cruising-rule>. The following change shall apply:
- a) The NYYC CR rule “Crew is limited to the number of berths” is changed to: “The number of crew age 16 or older shall be limited to the number of berths. Children who have not yet turned 16 on the last day of racing will not count against the crew limit.”
- 1.4 **Classics:** The current CRF rating shall apply to all yachts racing in the Classics division. NOR Addendum 1 – NYYC Classics Rules shall apply. More information can be found at <https://nyyc.org/group/pages/crf-classics-rule>.
- 1.5 **One-Design:** Classes with a minimum of six entries, or as otherwise approved by the OA, may be given their own start. The Class Rules for such class shall apply, except as may be changed by this notice of race or the sailing instructions.
- 1.6 **Multihull:** The current MOCRA rule shall apply to multihulls racing in the multihull division.
- 1.7 **Winches:** Except as noted in NOR Addendum 1 for the Classics division, yachts in non-spinnaker divisions will be permitted to use electric and hydraulic winches. This changes RRS 52.
- 1.8 **NOR Addendum 2 – US Safety Equipment Requirements (USSER)** shall apply:
- All boats shall minimally comply with the US Nearshore section of the USSER and shall comply with their class rules, where applicable.

- USSER 2.4.2, 2.4.3, and USSER 2.4.4.1 through 2.4.9 regarding Hull and Structure: Lifelines shall apply, except that boats not normally rigged with lifelines are exempt from these requirements and crew shall wear USCG-approved PFDs at all times while racing.
- In the event of a conflict between these Requirements and applicable class rules, the class rules shall apply.

- 1.9 Advertising will be restricted in accordance with the World Sailing Advertising Code.
- 1.10 Identification numbers shall be clearly visible on either the mainsail, overlapping headsail or on a special weather cloth attached to the lifelines. These numbers shall be registered with the Race Committee by the entry deadline. This changes RRS 77 and Appendix G.
- 1.11 The terms ‘yacht’ and ‘boat’ will be interchangeable in this Notice of Race, the Sailing Instructions and any other race documents pertaining to the regatta.

2 ELIGIBILITY AND ENTRY

- 2.1 Yachts shall be Enrolled yachts in accordance with NYYC By-Law Chapter XIII Section 1, yachts of the IC37 class owned or chartered by members, or as determined to be eligible by the Commodore.
- 2.2 While racing, a New York Yacht Club member must be on board all yachts except those invited by the Commodore.
- 2.3 Paid hands shall not be at the helm of a yacht at any time while racing unless in an emergency or by specific permission of the Race Committee.
- 2.4 Entry shall be made online on the regatta website. The entry deadline is Friday, July 11.
- 2.5 Crew list must be submitted by Friday, July 11. An entry is considered incomplete until this is received.
- 2.6 Unless otherwise permitted by the OA, participation in the Astor Cup Race Day is restricted to yachts entered in the Annual Cruise and participating in no less than two of the Squadron Runs.

3 FEES

- 3.1 The entry fee for yachts participating in the entire Cruise is \$900. This includes one tender for racing yachts. There may be additional charges for scheduled socials.
- 3.2 For yachts participating from July 26 to July 29, or July 30 to August 2, the entry fee is \$500. There may be additional charges for scheduled socials.

4 SCHEDULE

- 4.1 **Registration:** Yachts will rendezvous in Marblehead, MA. Registration will be open at Eastern Yacht Club from 1600-1800 on Saturday, July 26. Cruise Books, class assignments and scratch sheets will be distributed at registration. Yachts joining the Cruise after July 26 shall register with the Race Committee aboard the signal boat.
- 4.2 **Captains’ Meeting:** A Captains’ Meeting will be held at 1800 on Saturday, July 26, at Eastern Yacht Club. Attendance is limited to the captain or designee, plus one crewmember.
- 4.3 **Daily Schedule:**

<u>Day</u>	<u>Date</u>	<u>Event</u>	<u>Time</u>	<u>Event location</u>
Sat	July 26	Registration	1600-1800	Eastern Yacht Club, Marblehead, MA
		Captains’ Meeting	1800	Eastern Yacht Club, Marblehead, MA
		Opening Reception	1830	Eastern Yacht Club, Marblehead, MA
Sun	July 27	Squadron Run #1	1000	Marblehead, MA to Scituate*, MA
Mon	July 28	Astor Cup	1000	Scituate*, MA to Duxbury, MA
Tue	July 29	Squadron Run #2	1000	Duxbury, MA to Provincetown, MA
		Flag Officers’ Reception	1800	Pilgrim Museum
Wed	July 30	Lay Day		Provincetown, MA
Thu	July 31	Squadron Run #3	1000	Provincetown, MA to Marion, MA
Fri	Aug 1	Squadron Run #4	1000	Marion, MA to Vineyard Haven, MA
Sat	Aug 2	Squadron Run #5	1100	Vineyard Haven, MA to Newport, RI
		Final Cruise Event	1800	NYYC Harbour Court
				Cruise Disbands

*The finish for Squadron Run #1 and the start of Astor Cup will be located in the vicinity of Harding Ledge Lighted Bell Buoy 1HL, between Scituate and Hingham.

5 MEASUREMENT CERTIFICATES

Each yacht shall provide a valid, current rating certificate to the NYYC Sailing Office no later than Friday, July 11.

6 SAILING INSTRUCTIONS

Sailing instructions will be posted on the Annual Cruise website and included in the Cruise Book.

7 COURSES

Courses will be described in the sailing instructions. Drop mark races may be used for one or more classes on Astor Cup Race Day.

8 PENALTY SYSTEM

8.1 The Scoring Penalty, RRS 44.3 will apply. The penalty shall be two places within a boat's division.

8.2 In addition to the requirements in RRS 44.3, a yacht that has taken a penalty shall complete an online penalty acknowledgement form and alert the Race Committee not later than 2000 on the day of the incident.

9 SCORING

9.1 Five Squadron Runs are scheduled and form a series. A yacht's series score will be the total of all her race scores in these races. No score will be excluded. One race is required to be completed to constitute a series. This changes RRS A2.

9.2 Astor Cup Race Day will be scored separately.

9.3 Yachts that start, but fail to finish within the time limit for any reason shall, without a hearing, be scored by the Race Committee with points equal to the number of yachts in her class that have sailed the course and finished within the time limit, plus two. In no case shall a yacht receive a score worse than one point more than the number of starters in her class on that day. This changes RRS A4 and A5.

10 PRIZES

10.1 Prizes will be awarded as described below:

a) Astor Cup Race Day:

i. The Astor Cup will be awarded to the winning yacht in ORC Class I.

ii. The Una, Corsair and Dickerson Cups may be awarded as appropriate.

iii. A first place trophy will be awarded to the winning yacht in non-Cup classes if two or more yachts start in a class.

b) Points Trophies: Overall Points Trophies, commensurate with the number of points earned, will be awarded to each yacht earning points during the Cruise.

i. Yachts finishing first in a class in a Squadron Run or on Astor Cup Race Day will earn four points;

ii. Yachts finishing second in a class in a Squadron Run or on Astor Cup Race Day will earn two points;

iii. Yachts finishing third in a class in a Squadron Run or on Astor Cup Race Day will earn one point.

10.2 All prizes, cups and trophies will be awarded at the Annual Awards Dinner in New York on Thursday, November 13, 2025, to which all members and their guests are invited.

10.3 The CYGNET CUP may be awarded to the enrolled yacht that in the opinion of the Race Committee makes an outstanding performance during the Cruise, including the Squadron Runs and Astor Cup Race Day.

10.4 The CRUISING RULE CUP may be awarded at the discretion of the Flag Officers to a yacht in the New York Yacht Club CR division, owned and sailed by a NYYC member, that best exemplifies the traditions of yachting by her upkeep and appearance and performs admirably on the Cruise.

10.5 The EDWARD WELCH CLUCAS MEMORIAL TROPHY will be awarded to the yacht having the fastest elapsed time on the longest run of the Cruise.

10.6 Additional trophies may be awarded at the discretion of the OA.

10.7 The following Cups and Trophies may be awarded to the yachts with the best cumulative scores in their class for the series (additional trophies may also be awarded):

- a) Royal Yacht Squadron Cup
- b) H. Irving Pratt Memorial Trophy
- c) Cumberland Cup
- d) Royal Sydney Yacht Squadron Bowl
- e) Navy Members Cup
- f) Venona Cup 1913
- g) Royal Bermuda Yacht Club Trophy
- h) Royal Perth Yacht Club Trophy
- i) Titania Cup
- j) Venona Cup 1912
- k) Commodore's Cup 1901
- l) Reliance Cup

11 DISCLAIMER OF LIABILITY

11.1 As a condition of entry, each owner, skipper and individual participating crew member shall submit, prior to racing, an online liability waiver/media release. The waiver form link can be found on the Annual Cruise [website](#).

11.2 Competitors and guests participate in the Annual Cruise entirely at their own risk. See RRS 3, Decision to Race. The organizing authority will not accept any liability for material damage or personal injury or death sustained in conjunction with or prior to, during, or after the regatta. Attention is also drawn to RRS 46 and USSER 1.2, Overall: Responsibility.

12 FURTHER INFORMATION

For further information, please visit the Annual Cruise website at <https://nyyc.org/group/pages/169th-annual-cruise> or contact the Sailing Office at:

New York Yacht Club, Harbour Court
5 Halidon Avenue
Newport, RI 02840

401 845-9633
401 846-3303 fax
sailingoffice@nyyc.org



NEW YORK YACHT CLUB 169th ANNUAL CRUISE

July 26-August 2, 2025

SAILING INSTRUCTIONS incorporating AMENDMENT 1 (in red)

1 RULES

- 1.1** The Annual Cruise will be governed by the rules as defined in *The Racing Rules of Sailing* (RRS).
- 1.2** The current ORC Rules shall apply to yachts racing under ORC, ORC non-spinnaker and ORC non-spinnaker double-handed. Additional restrictions may apply to ORC non-spinnaker yachts as stated in the Notice of Race.
- 1.3** The current NYYC Cruising Rule (NYYC CR) and any subsequent amendments shall apply to yachts racing under NYYC CR. Additional restrictions may apply to NYYC CR yachts as stated in the Notice of Race.
- 1.4** If there is a designated Classics division, it will be scored using the current CRF rating rule. The rules in Notice of Race Addendum 1 – NYYC Classics Rules shall apply.
- 1.5** US Safety Equipment Requirements (USSER): All yachts shall minimally comply with the US Nearshore section of the USSER as changed in Notice of Race Addendum 2 – US Safety Equipment Requirements, except as noted in NOR 1.8.

2 REGISTRATION, ANNOUNCEMENTS AND CHANGES TO SAILING INSTRUCTIONS

- 2.1 Registration** – Yachts will rendezvous in Marblehead, MA. Registration will take place at Eastern Yacht Club from 1600 to 1800 on Saturday, July 26. Cruise Books, class assignments and scratch sheets will be distributed at registration. Yachts joining the Cruise after July 26 shall register with the Race Committee aboard the signal vessel STARLIGHT.
- 2.2 Captains' Meeting** – A Captains' Meeting will be held at 1800 on Saturday, July 26. Attendance is limited to the captain or designee, plus one crewmember.
- 2.3 Daily Announcements** – All yachts shall monitor the Race Committee's daily announcements on the fleet VHF channel (VHF channel 72). If an alternate channel is selected, the fleet will be so informed. The announcements may include the rendezvous location, the intended order of start for that day's racing and any other Cruise announcements. The Race Committee will continue to monitor and communicate on the fleet VHF channel.

Daily Announcement Times: Sunday – Saturday – 0800hrs

Competitors are strongly encouraged to join the What's App group to receive regular (unofficial) updates regarding racing and Cruise information. Sign-up details can be found on the event webpage.

- 2.4 Changes to the Sailing Instructions** – Any change to the sailing instructions will be announced during the daily announcements.

3 SIGNALS MADE AFLOAT, POSTPONEMENT AND SHORTENED COURSE

- 3.1** If conditions do not permit a start on schedule for any Squadron Run, the Race Committee may postpone, fly flag "L" (follow me) and proceed up the course in the direction of the next destination, or to the first mark of one of the designated courses for that Squadron Run, or to another location as broadcasted on the fleet VHF channel.

- 3.2 Harbor Starts:** In keeping with NYYC tradition and yacht protocol, the flagship, FOGGY, shall signal "Harbor Start" by firing one gun to call attention to the signal for getting underway. The code flags EK ("Squadron will get underway for ____") will be flown over the code flags for the day's destination from the flagship's starboard spreader (refer to Protocol Section in the Cruise Book for destination code flags). All yachts shall acknowledge by displaying the Answering Pennant (AP) at their starboard rigging hoisting the AP partially (at the dip) as soon as each Signal is observed and full up (two-blocked) when such signal is understood.
- 3.3** The Race Committee may decrease the length of a Squadron Run before the start by following the procedure in SI 3.1. When a course is decreased in length to start at either a mark of the course or by setting a special NYYC inflatable mark for a new starting mark, only those marks listed in the course posted that are subsequent to the new start mark need to be left on the required side.
- 3.4** Any course may be shortened prior to the designated finish mark in accordance with rule 32.2.
- 3.5** The failure of the Race Committee to make any announcement on the VHF fleet channel or for a yacht to hear any announcement made shall not be grounds for a boat to request redress. This changes rule 61.4(b).

4 CLASSES AND IDENTIFICATION

- 4.1** Yachts shall race in assigned classes. Yachts shall display the numeral pennant corresponding to their class assignments from the backstay approximately six feet above the deck. The pennant shall be displayed prior to the warning signal of the first class to start until a yacht has finished or retired.
- 4.2** A yacht with valid ratings in more than one class (e.g., ORC and NYYC CR, or ORC spinnaker and non-spinnaker), may change classes for subsequent races by written application to and permission of the Race Committee prior to 2100 on the day before such change will take effect. Transfers in class will remain in effect until another change is requested and granted as above.
- 4.3** Class assignments will be distributed at registration. Any changes in accordance with SI 4.2 will be announced in the daily announcements.

5 SCHEDULE OF RACES

Details for each day of racing can be found in SI Addendum 1 – Daily Schedule & Courses.

Races are scheduled as follows:

<u>Day</u>	<u>Date</u>	<u>Event</u>	<u>Time</u>	<u>Event location</u>
Sat	July 26	Registration	1600-1800	Eastern Yacht Club, Marblehead, MA
		Captains' Meeting	1800	Eastern Yacht Club, Marblehead, MA
		Opening Reception	1830	Eastern Yacht Club, Marblehead, MA
Sun	July 27	Squadron Run #1	1000	Marblehead, MA to Scituate, MA
Mon	July 28	Astor Cup	1000	Scituate, MA to Duxbury, MA
Tue	July 29	Squadron Run #2	1000	Duxbury, MA to Provincetown, MA
		Flag Officers' Reception	1800	Pilgrim Museum
Wed	July 30	Lay Day		Provincetown, MA
Thu	July 31	Parade	0830	See SI Addendum 1 for details
		Squadron Run #3	1000	Provincetown, MA to Marion, MA
Fri	Aug 1	Squadron Run #4	1000	Marion, MA to Vineyard Haven, MA
Sat	Aug 2	Parade	0830	See SI Addendum 1 for details
		Squadron Run #5	1100	Vineyard Haven, MA to Newport, RI
		Final Cruise Event	1800	NYYC Harbour Court
				Cruise Disbands

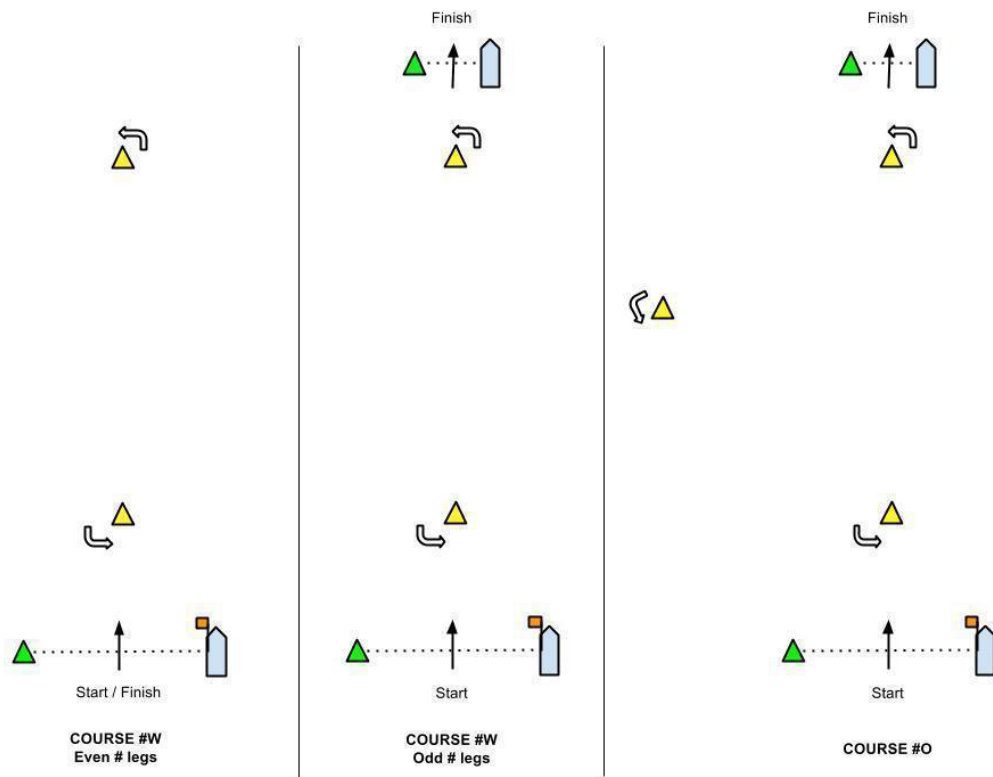
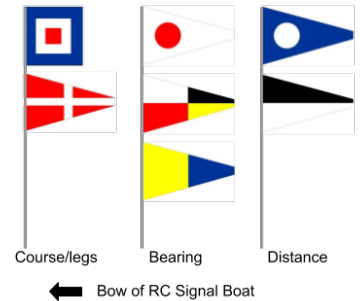
6 COURSES

- 6.1** Drop mark courses, as described in SI 7, may be used on Monday, July 28, on Astor Cup Race Day.
- 6.2** All other courses will be as described in SI 9 and SI Addendum 1. The courses for Astor Cup Race Day and Squadron Runs are described in SI Addendum 1.
- 6.3** The distances used for scoring purposes will be as calculated by the Race Committee and shall not be grounds for a boat to request redress. This changes rule 61.4(b).

7 COURSES FOR DROP MARK RACES

- 7.1 The flag(s) designating the course to be sailed will be flown at the time of “Course Signals” set forth in SI 6.1 and SI Addendum 1. Subsequent classes will sail the same course unless a new course is displayed at their warning signal. If a new course is displayed, the Race Committee will endeavor to announce the course on the fleet VHF channel. **Note:** On course ”W”, each class may sail a different number of legs on the same course.
- 7.2 Course “W” is a Windward/Leeward course. A numeral pennant indicating the number of legs to be raced will be flown beneath flag “W”.
- 7.3 Course “O” is a Triangle/Windward/Leeward/Finish to Windward course.
- 7.4 The leeward mark will be set approximately 0.1 NM to windward of the starting line.
- 7.5 The course designation, bearing and distance to the first mark will be signaled using numeral pennants displayed on poles. The course designation will be flown forward, followed by the three pennants designating the magnetic bearing to the first mark, followed by the two pennants designating distance (nautical miles and tenths) to the first mark.
- 7.6 Marks shall be rounded in order and left to port.
- 7.7 Course diagrams:

Example shown:
 Course W4 (see SI 5.1);
 windward mark 195° at
 2.6 nm



8 MARKS FOR COURSES “W” AND “O” AND COURSE CHANGES

- 8.1 The original windward, leeward and reaching (if used) marks will be yellow tetrahedron buoys.
- 8.2 To change the next leg of the course, the race committee will (a) move the original mark to its new location, (b) lay a new mark of the same color, or (c) move the finishing line. When a new mark is laid, the original mark will be removed as soon as possible.
- 8.3 The starting and finishing marks will be green tetrahedron buoys.

9 COURSES AND MARKS FOR SQUADRON RUNS AND NON-DROP MARK RACES

9.1 At the time of Course Signals each day, the Race Committee will designate the course to be sailed as described in SI Addendum 1 by either:

- a) displaying the numeral pennant for the course, as well as flags describing Special Mark “E”, if used, as defined in SI 9.3.
- b) listing the marks of the course on a white board in the order to be rounded and the required side to leave each mark, as well as flags describing Special Mark “E”, if used, as defined in SI 9.2. If Mark “E” is used, it will also be listed as the first mark on the white board.
- c) Subsequent classes will sail the same course unless a new course is displayed at their warning signal. If a new course is displayed, the Race Committee will endeavor to announce the course on the fleet VHF channel.

9.2 Special Mark “E”

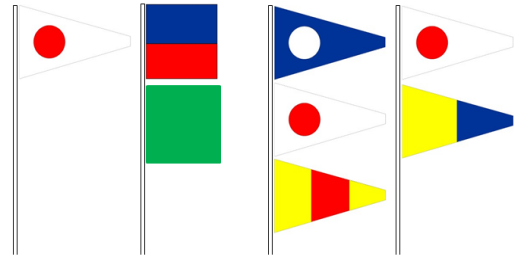
- a) The Race Committee may add a new first mark to any course by displaying flag “E” above a green or red flag on a separate pole.
- b) Mark “E” is to be rounded either to STARBOARD (green flag below “E”), or to PORT (red flag below “E”), prior to sailing the course as described in SI Addendum 1.
- c) The bearing and distance to Mark “E” will be signaled using numeral pennants displayed on poles. The course designation, if used, will be flown forward, followed by flag “E” above a green or red flag, followed by three pennants designating the magnetic bearing to mark “E”, followed by the two pennants designating distance (nautical miles and tenths) to mark “E”.
- d) Mark “E” will be an ORANGE tetrahedron buoy.

9.3 The starting mark will be a GREEN tetrahedron buoy.

9.4 The finishing mark will be described in SI Addendum 1.

Example shown:

*Course 1; First mark “E” to be rounded to starboard;
Mark “E” is at a bearing of 210° M and distance of
1.5nm*



10 THE START

10.1 Races will be started using RRS 26.

10.2 The warning signal for each succeeding class may be made with the starting signal of the preceding class.

10.3 The starting line will be between a staff displaying an orange flag on the Race Committee signal vessel and the course side of the starting mark.

10.4 Yachts whose warning signal has not been made shall keep clear of the starting area.

10.5 A yacht starting later than 15 minutes after her starting signal shall be scored Did Not Start. This changes RRS A4 and 35.

11 INDIVIDUAL RECALLS

The Race Committee will endeavor to hail each boat on the course side over the fleet VHF channel.

Failure to make such an announcement, the timing or order of any announcement, shall not be grounds for a boat to request redress. This changes RRS 61.4(b).

12 RETIRING FROM A RACE

Yachts retiring from a race are requested to notify the Race Committee on the fleet VHF channel. If unable to reach the Race Committee by VHF radio, a yacht shall try to contact the Race Committee via cell phone at (339) 933-0963 (Forrest Williams). If still unable to reach the Race Committee by either method above, a yacht shall report to the Race Committee in that evening’s harbor.

13 GOVERNMENT BUOYS

All government buoys mentioned in these instructions are subject to changes as listed in the “U.S.C.G. Local Notice to Mariners.” Positions of buoys or lights given in these sailing instructions are for information only. Each yacht is responsible for its navigation.

14 THE FINISH

- 14.1 Drop Mark Race Finish** – The finishing line for Courses “W” and “O” will be between a staff displaying a blue flag on a Race Committee vessel and the course side of the finishing mark.
- a) For course “W” with an odd number of legs and course “O”, the finish line will be located approximately 0.1 NM to windward of the windward mark.
 - b) For course “W” with an even number of legs, the finish line will be located approximately 0.1 NM to leeward of the leeward mark.
- 14.2** For courses “W” and “O”, the windward or leeward mark are not marks of the course respectively when approaching a windward or leeward finishing line.
- 14.3 Squadron Run Finish** – The finish for all Squadron Runs will be between a staff displaying a blue flag on a Race Committee vessel and the course side of the designated finishing mark, except as described in SI 14.5.
- 14.4** The Race Committee vessel at the finish may or may not be the same vessel that started the race.
- 14.5** No RC on Station – In the event that there is no Race Committee vessel on station at the finishing line, a yacht shall finish and take her own time in accordance with the US Sailing prescription to rule 34 changed to read “a boat shall finish within 100 yards of the remaining mark on a line extending from its required side at a 90° angle to the last leg,” and report her finishing time and finishing position in relation to any nearby yachts and report them to the Race Committee as soon as reasonably possible, but no later than 2000 on the day of the race.
- 14.6** Shortened Course using “Course Gates” – Yachts shall record their time when they pass through each “course gate” as described in SI Addendum 1. In the event that the Race Committee decides to shorten the course to a “course gate”, it will signal its intention to do so prior to any yacht in their class completing the original course by displaying flag “G” over the numeral pennant of the designated gate, accompanied by two sound signals, and attempt to notify the racing yachts on the fleet VHF channel. Each yacht shall provide the Race Committee with their time(s) passing the “course gate(s)” as soon as reasonably possible after finishing, but not later than 2000.
- 14.7** After sunset, the Race Committee vessel will display the club night signal (Green over Red over Green).
- 14.8** If there is fog at the finish, the Race Committee vessel may ring a bell rapidly or sound a fog horn, for approximately five seconds, at intervals.

15 PENALTY SYSTEM

- 15.1** The Scoring Penalty, RRS 44.3 will apply. The penalty will be two finishing places. This changes RRS 44.3(c). No boat shall receive a score worse than one point more than the number of entries in her class.
- 15.2** A yacht that has taken a penalty shall submit an online penalty acknowledgement form not later than 2000 on the day of the incident.
- 15.3** The protest committee may impose suitable penalties, other than disqualification, for breaches of any non-Part 2 rule. This changes RRS 60.5(c).

16 TIME LIMIT

The time limit for the Squadron Runs and non-drop mark races is 1600. Any yacht not finishing within the time limit will be recorded as “Did Not Finish” (DNF) and scored as described in SI 18.5.

17 PROTESTS AND REQUESTS FOR REDRESS

- 17.1** A yacht planning to protest or request redress shall submit an online Hearing Request form.
- 17.2** Not later than 2000 on the day of the incident, a protesting yacht shall notify the Race Committee that she submitted an online Hearing Request form. Protest hearings will be held at the time announced by the Race Committee.
- 17.3** Breaches of SIs 4.1, 10.4 and 17.1 will not be grounds for a protest by a yacht. This changes rule 60.1.

18 SCORING

- 18.1** Five Squadron Runs are scheduled and comprise a series. A yacht’s series score will be the total of all her race scores in these races. No score will be excluded. One race is required to be completed to constitute a series. This changes RRS A2.
- 18.2** Astor Cup Race Day will be scored as a stand-alone series.
- 18.3** ORC will be scored using Single Number, All-Purpose Time-on-Time.

- 18.4** For scoring purposes, the distance used (as needed) will be that as calculated by the Race Committee.
- 18.5** Yachts that start but fail to finish within the time limit for any reason shall, without a hearing, be scored by the Race Committee with points equal to the number of yachts in her class that have sailed the course and finished within the time limit, plus two. In no case shall a yacht receive a score worse than one point more than the number of starters in her class on that day. This changes RRS A4 and A5.

19 PRIZES

19.1 Prizes will be awarded as described below:

- a) Astor Cup Race Day:
 - i) The Astor Cup will be awarded to the winning yacht in ORC Class I.
 - ii) The Una, Corsair and Dickerson Cups may be awarded as appropriate.
 - iii) A first place trophy will be awarded to the winning yacht in non-Cup classes if two or more yachts start in a class.
- b) Points Trophies: Overall Points Trophies, commensurate with the number of points earned, will be awarded to each yacht earning points during the Cruise.
 - i) Yachts finishing first in a class in a Squadron Run or on Astor Cup Race Day will earn four points;
 - ii) Yachts finishing second in a class in a Squadron Run or on Astor Cup Race Day will earn two points;
 - iii) Yachts finishing third in a class in a Squadron Run on Astor Cup Race Day will earn one point.

19.2 All prizes, cups and trophies will be awarded at the Annual Awards Dinner in New York on Thursday, November 13, 2025, to which all members and their guests are invited.

19.3 The CYGNET CUP may be awarded to the enrolled yacht, which in the opinion of the Race Committee makes an outstanding performance during the Cruise, including the Squadron Runs and Astor Cup Race Day.

19.4 The CRUISING RULE CUP may be awarded at the discretion of the Flag Officers to a yacht in the New York Yacht Club Cruising Rule division, owned and sailed by a NYYC member, which best exemplifies the traditions of yachting by her upkeep and appearance and performs admirably on the Cruise.

19.5 The EDWARD WELCH CLUCAS MEMORIAL TROPHY will be awarded to the yacht having the fastest elapsed time on the longest run of the Cruise.

19.6 Additional trophies may be awarded at the discretion of the Organizing Authority.

19.7 The following Cups and Trophies may be awarded to the yachts with the best cumulative scores in their class for the Cruising and Racing series. Additional trophies may be awarded.

- a) Royal Yacht Squadron Cup
- b) H. Irving Pratt Memorial Trophy
- c) Cumberland Cup
- d) Royal Sydney Yacht Squadron Bowl
- e) Navy Members Cup
- f) Venona Cup 1913
- g) Royal Bermuda Yacht Club Trophy
- h) Royal Perth Yacht Club Trophy
- i) Titania Cup
- j) Venona Cup 1912
- k) Commodore's Cup 1901
- l) Reliance Cup

20 WAIVERS AND RELEASES

- 20.1** Competitors participate in the regatta entirely at their own risk. See RRS 3, Decision to Race. The Organizing Authority, New York Yacht Club, and any official sponsors will not accept any liability for material damage or personal injury or death sustained in conjunction with or prior to, during or after the regatta. Attention is also drawn to RRS 46 and USSER 1.2, Responsibility.
- 20.2** As a condition of entry, each owner, skipper and individual participating crew member shall submit the online [Waiver and Media Release](#). The fully executed release shall be submitted prior to racing. The release form link can be found on the [Annual Cruise website](#).
- 20.3** Boats shall not be scored unless the skipper/person-in-charge has submitted a Waiver and Media Release.

21 ADDITIONAL INFORMATION

- 21.1** The 169th Annual Cruise website can be found at: <https://nyyc.org/group/pages/169th-annual-cruise>.
- 21.2** For further information please contact the Sailing Office at 401-845-9633 or at sailingoffice@nyyc.org.

NOTES RELATED TO THE SAILING INSTRUCTIONS

- All times herein are Eastern Daylight Time. Bearings are in degrees magnetic and are approximate. Distances are expressed in nautical miles and are approximate. All latitudes and longitudes for mark positions are approximate and should be verified by each yacht as needed.
- In the event that life-saving equipment is lost overboard, it should be retrieved. If recovery is impossible, loss of any equipment that floats shall be reported immediately to the Race Committee and to the nearest U.S. Coast Guard station on VHF channel 16.
- After racing each day, the Race Committee boat will display Flag “R” when results are available and can be picked up. Please do not approach the Race Committee prior to that time except to file a protest, request redress or report a Scoring Penalty.
- The Race Committee will also attempt to post the results on the Annual Cruise website and will display Flag “W” when they are posted. Results of daily racing may be delayed due to availability of an Internet connection, in which case they will be posted at the first available opportunity.
- The Race Committee will endeavor to distribute hard copies of the results each evening.

Race Committee

Forrest Williams, Principal Race Officer

Peggy Hersam

Pam Murrin

Michael Shea

Jessica Williams

ADDENDUM 1 – DAILY SCHEDULE & COURSES

Please note that some diagrams show marks on the route that are not rounding or passing marks. They are just functions of the rhumb line. Please disregard any waypoints on the diagrams that are not specifically referred to in the course description.

Sunday, July 27

Marblehead to Scituate

SQUADRON RUN #1 for the US NAVY CHALLENGE CUP

SQUADRON RUN RENDEZVOUS AREA

Rendezvous in the vicinity of GR “TR” GONG to the SE of Marblehead Harbor

SCHEDULE

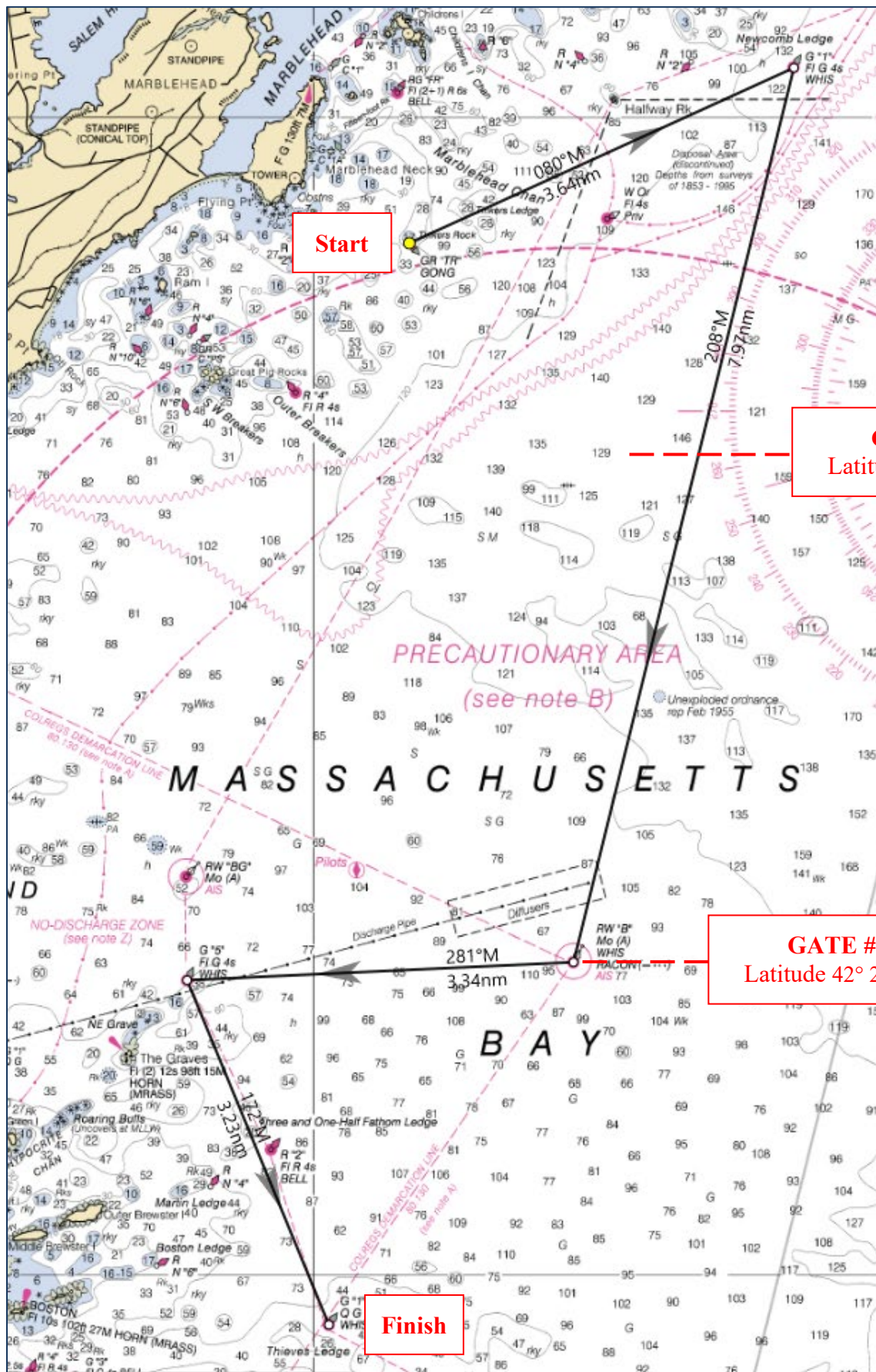
0800 Announcements on VHF Channel 72
0830 Harbor Start Signals
0955 Course Signals

COURSE #1 (approx. 18.17 NM)

- Start
- Special Mark “E” if used (see SI 9.2)
- G “1” Fl G 4s WHIS off Newcomb Ledge to starboard
- GATE #1: Record your time when you cross latitude 42° 27.000’
- RW “B” Mo (A) WHIS RACON to starboard
 - GATE #2: Record your time when you cross latitude 42° 22.700’
- G “5” Fl G 4s WHIS to port
- Finish in the vicinity of G “1” Q G WHIS off Thieves Ledge

OUR TIME at MARK/GATE #1: _____ hh _____ mm _____ ss EDT

OUR TIME at MARK/GATE #2: _____ hh _____ mm _____ ss EDT



Monday, July 28

Scituate to Duxbury

ASTOR CUP RACE DAY

ASTOR CUP RENDEZVOUS AREA

Rendezvous in the vicinity of G “1” Q G WHIS off Thieves Ledge. There are two course options for Astor Cup described below.

SCHEDULE

0800 Announcements on VHF Channel 72

0815 Harbor Start Signals

0955 Course Signals

COURSE #1 (approximately 17.40 NM)

- Start
- Special Mark “E” if used (see SI 9.2)
- G “1DL” Fl G 2.5s GONG off Minots Ledge to starboard
- GATE #1: Record your time when you cross latitude 42° 16.350’
- GATE #2: Record your time when you cross latitude 42° 11.000’
- Finish in the vicinity of R “6” Fl R 4s BELL off Farnham Rock

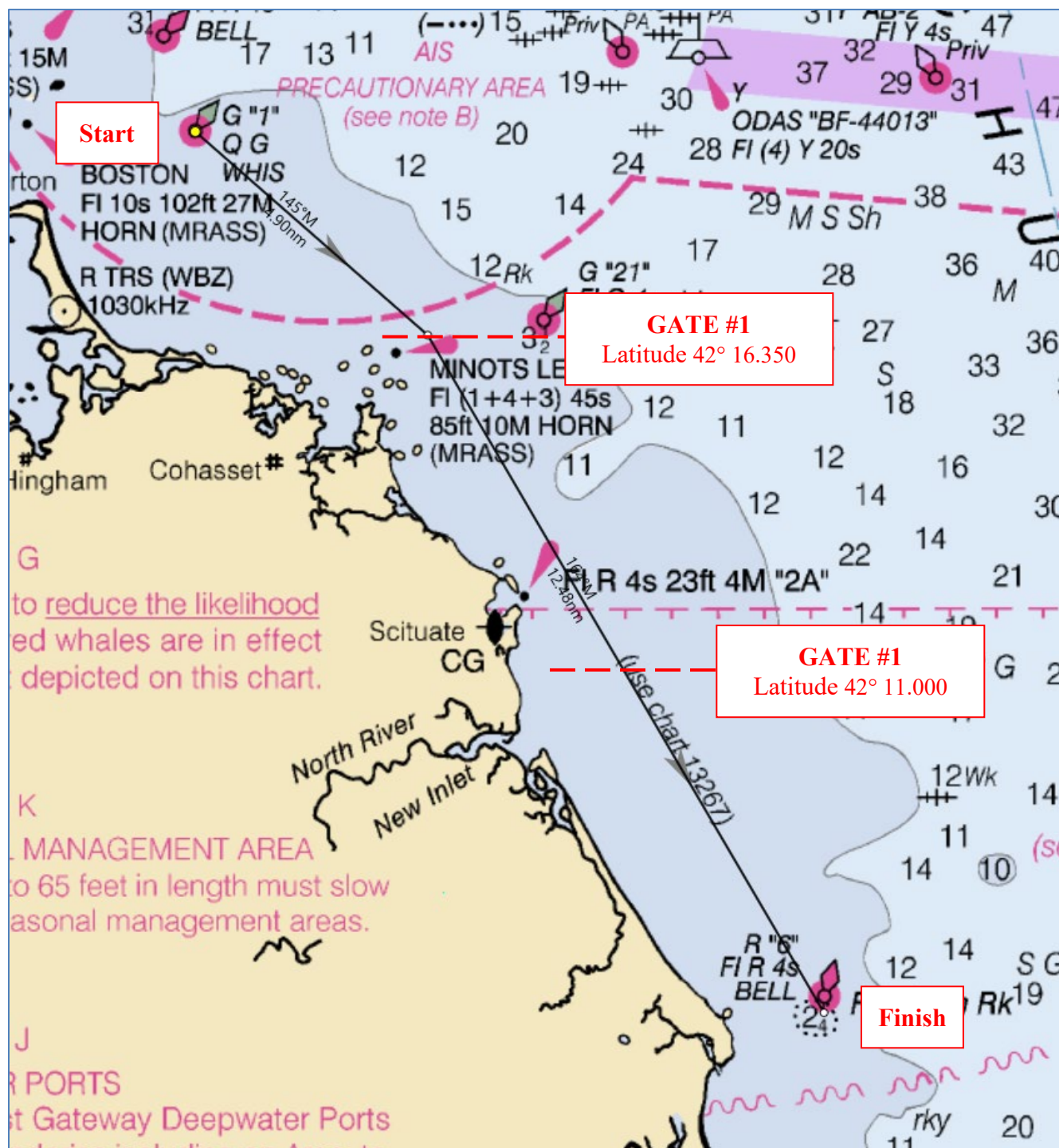
OUR TIME at GATE #1: _____ hh _____ mm _____ ss EDT

OUR TIME at GATE #2: _____ hh _____ mm _____ ss EDT

COURSE #2

Drop mark course “W” or “O” per SI 7. The rendezvous for this course is as described above.

COURSE #1



Tuesday, July 29

Duxbury to Provincetown

SQUADRON RUN #2 for the NYYC RACE COMMITTEE TROPHIES

SQUADRON RUN #2 RENDEZVOUS AREA

Rendezvous in the vicinity of G “1” Q G BELL outside Plymouth Harbor

SCHEDULE

0800 Announcements on VHF Channel 72

0830 Harbor Start Signals

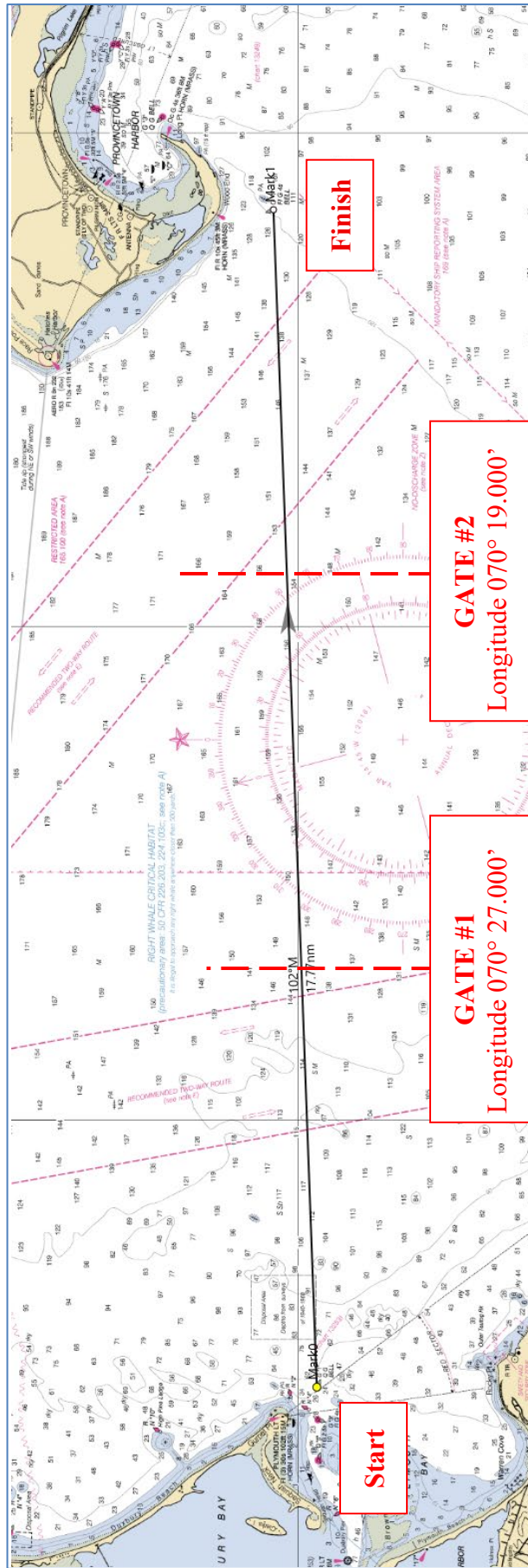
0955 Course Signals

COURSE #1 (approx. 17.77 NM)

- Start
- Special Mark “E” if used (see SI 9.2)
- GATE #1: Record your time when you cross longitude 070° 27.000’
- GATE #2: Record your time when you cross longitude 070° 19.000’
- Finish in the vicinity of G “1” Fl G 4s BELL

OUR TIME at GATE #1: _____ hh _____ mm _____ ss EDT

OUR TIME at GATE #2: _____ hh _____ mm _____ ss EDT



Wednesday, July 30

Provincetown

LAY DAY

SCHEDULE

0800 Announcements on VHF Channel 72
0800 Dress Ship until sunset at 2001 hrs

Thursday, July 31

Provincetown to Marion

SQUADRON RUN #3 for the COMMODORE'S TROPHIES

PARADE RENDEZVOUS AREA

Yachts will assemble just outside the breakwater

SQUADRON RUN #3 RENDEZVOUS AREA

Rendezvous in the vicinity of G "1" Fl G 4s BELL outside Provincetown

SCHEDULE

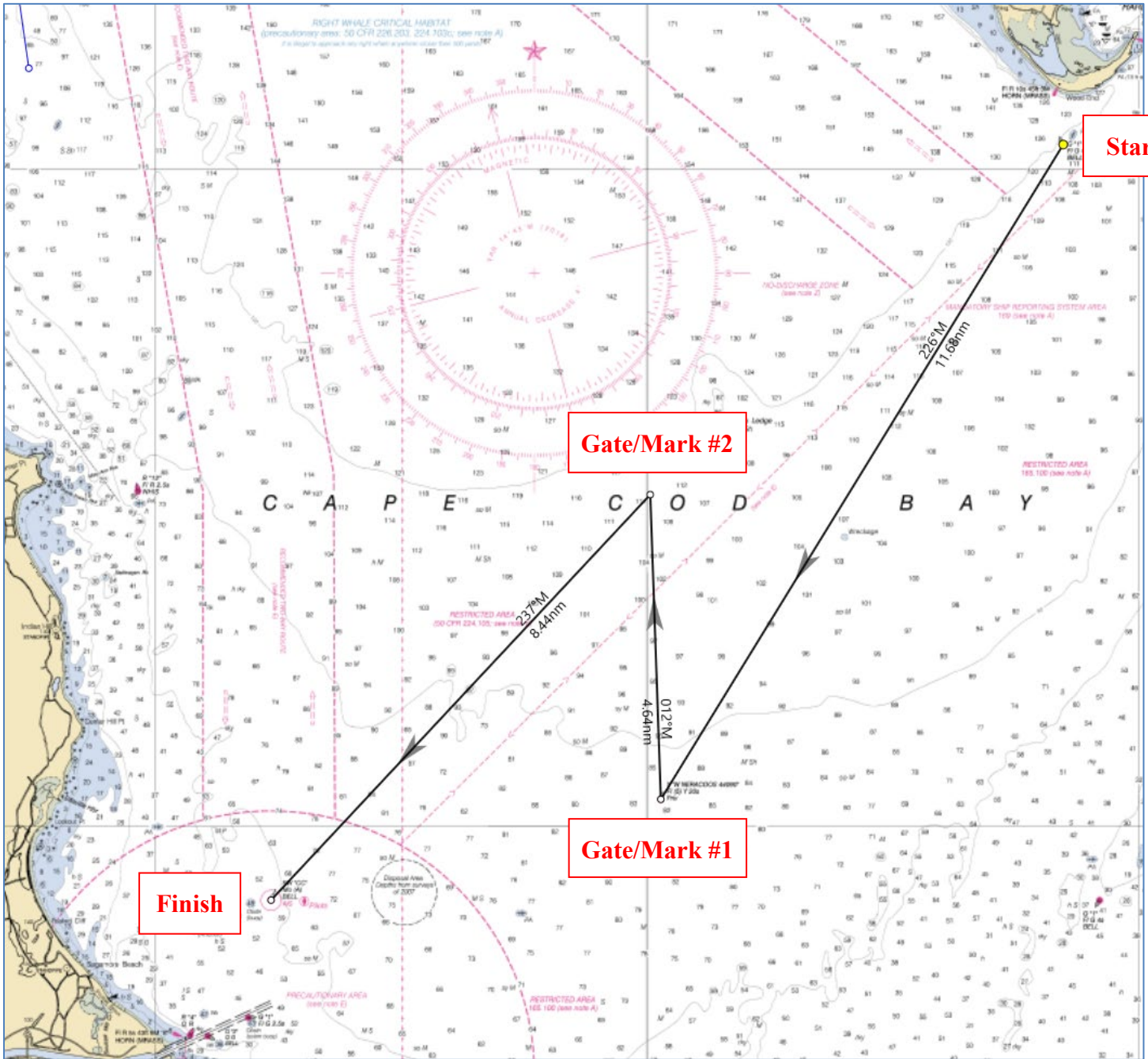
0800 Announcements on VHF Channel 72
0815 Harbor Start Signals
0830 Parade with fleet from outside the breakwater to G "1" Fl G 4s BELL outside Provincetown
0955 Course Signals

COURSE #1 (approx. 25.20 NM)

- Start
- Special Mark "E" if used (see SI 9.2)
- Y "W NERACOOS 440090" Fl (5) y 20S Priv (approx. 41° 50.90' | 070° 19.79') to starboard
 - GATE/MARK #1: Record your time when rounding this mark
- WHOI CC Lighted Research Buoy DMON (approx. 41° 55.07' | 070° 19.93) to port
 - GATE/MARK #2: Record your time when rounding this mark
- Finish in the vicinity of RW "CC" Mo (A) BELL N of the Cape Cod Canal entrance channel

OUR TIME at GATE/MARK #1: _____ hh _____ mm _____ ss EDT

OUR TIME at GATE/MARK #2: _____ hh _____ mm _____ ss EDT



Friday, August 1

Marion to Vineyard Haven

SQUADRON RUN #4 for the VICE COMMODORE'S TROPHIES

SQUADRON RUN #4 RENDEZVOUS AREA

Rendezvous in the vicinity of G "1" Fl G 4s BELL outside Mattapoisett Harbor off Nye Ledge

SCHEDULE

0800 Announcements on VHF Channel 72

0815 Harbor Start Signals

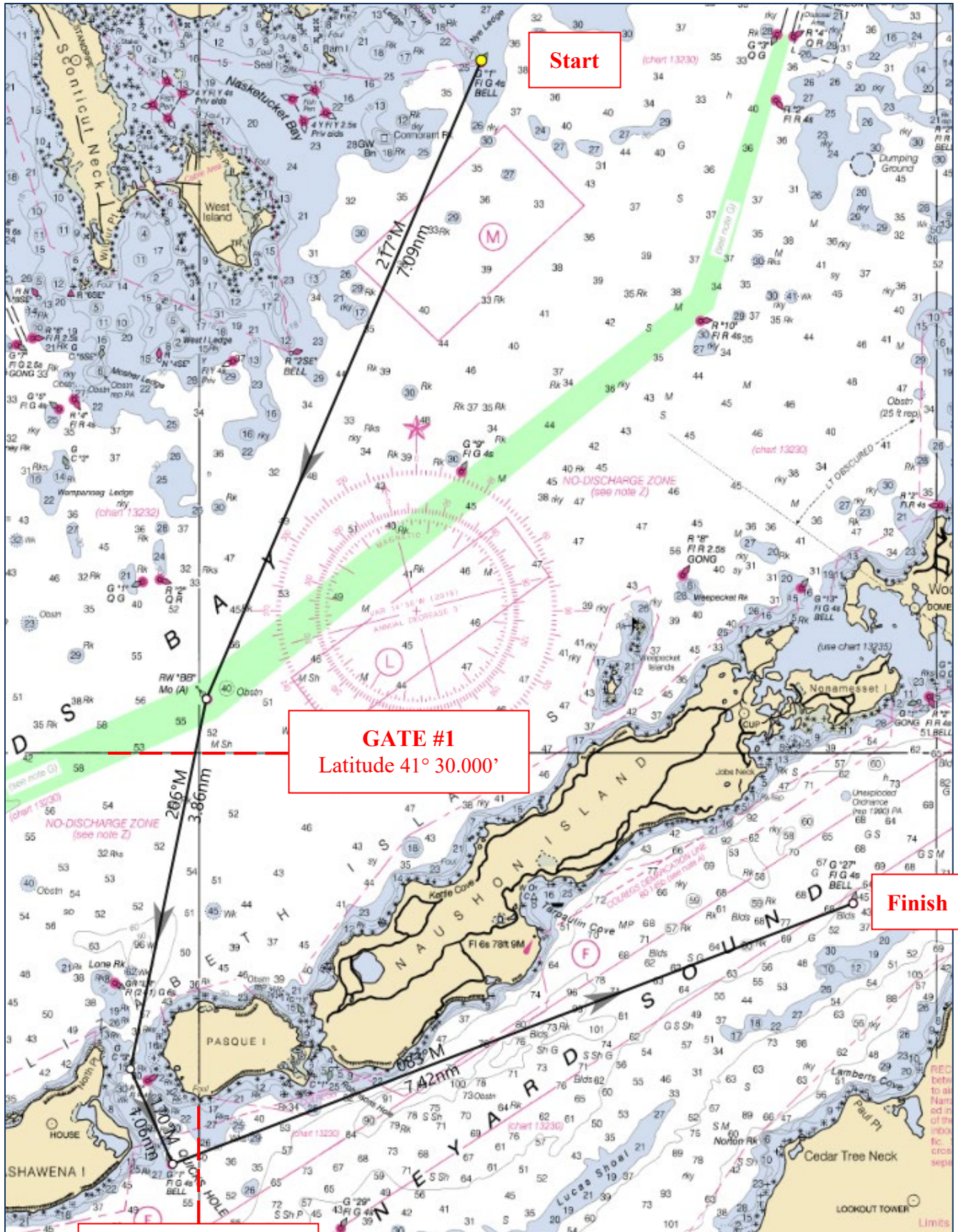
0955 Course Signals

COURSE #1 (approx. 19.43 NM)

- Start
- Special Mark "E" if used (see SI 9.2)
- RW "BB" Mo (A) to port
- GATE #1: Record your time when you pass latitude 41° 30.000'
- G C "3" in Quicks Hole to starboard
- R "2" Fl R 4s to port
- G "1" Fl G 4s BELL in Quicks Hole to starboard
- GATE #2: Record your time when you pass longitude 071° 50.000'
- Finish in the vicinity of G "27" Fl G 4s BELL

OUR TIME at GATE #1: _____ hh _____ mm _____ ss EDT

OUR TIME at GATE #2: _____ hh _____ mm _____ ss EDT



Saturday, August 2

Vineyard Haven to Newport

SQUADRON RUN #5 for the REAR COMMODORE'S TROPHIES

PARADE RENDEZVOUS AREA

Yachts will assemble in the vicinity of R N "6" outside Vineyard Haven Harbor

SQUADRON RUN #5 RENDEZVOUS AREA

Rendezvous in the vicinity of R "30" south of Nashawena Island

SCHEDULE

- 0800 Announcements on VHF Channel 72
- 0815 Harbor Start Signals
- 0830 Parade with fleet from R N "6" to R "2" Fl R 4s GONG NE of West Chop
- 1055 Course Signals

COURSE #1 (approx. ~~27.71~~ 23.88 NM)

- Start
- Special Mark "E" if used (see SI 9.2)
- R "36" FL R 4s BELL to starboard
- GATE #1: Record your time when crossing longitude 071° 00.000'
- GATE #2: Record your time when crossing longitude 071° 10.000'
- ~~GATE #3: Record your time when crossing longitude 071° 20.000'~~
- **Finish in the vicinity of R "2" QR WHIS off Brenton Reef to starboard**
- ~~R "6" BELL off Castle Hill to starboard~~
- ~~Finish in the vicinity of Fort Adams~~

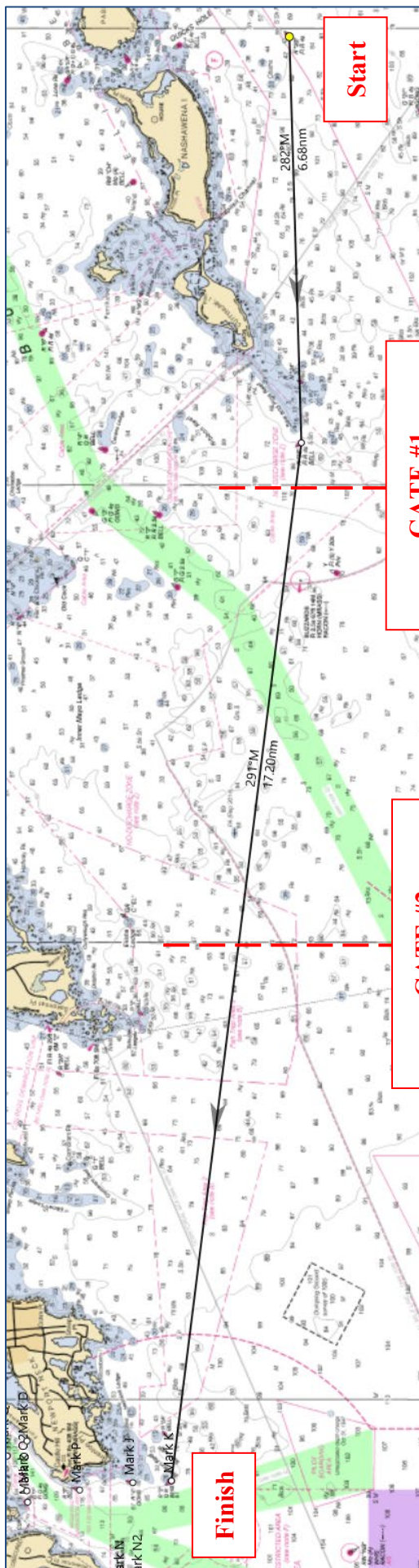
OUR TIME at GATE/MARK #1: _____ hh _____ mm _____ ss EDT

OUR TIME at GATE/MARK #2: _____ hh _____ mm _____ ss EDT

OUR TIME at GATE/MARK #3: _____ hh _____ mm _____ ss EDT

Saturday, August 2 (con't)

Vineyard Haven to Newport



TROPHIES

CRUISE TROPHIES

NYYC Ahead Trophy Project – Oriole Trophy



Oriole Trophy
Steiff Co., Baltimore
c. 1982

Trophy History: In 1980 six prizes, won by the NY 30 Class yacht **ORIOLE** from 1926 to 1930, were given to the Club in memory of her owner, Samuel Pirie. These prizes, together with a tray created in 1982 by the Club to contain them, shown here, constitute a tea service to be known as the Oriole Trophy.

Awarding of the Oriole Trophy: The Oriole Trophy is to be awarded to a vessel racing in or cruising in company with the NYYC Annual Cruise as the Fleet Captain deems appropriate.

NYYC Ahead Trophy Project – Fairfa Cup



Fairfa Cup
Tiffany & Co., London
1961

Trophy History: The Fairfa Trophy was presented to the New York Yacht Club by Mrs Frank P. Huckins in memory of her husband Frank Pembroke Huckins, the designer of the Quadraconic Hull on which the US Navy's PT boats built for World War II were based and the generations of power boats that bore his name. The trophy, shown here, and which includes an engraving of a Huckins yacht underway, was originally to be awarded annually for the best performance in power yacht competition.

Awarding of the Fairfa Cup: The Fairfa Cup is to be presented to the motor yacht on the New York Yacht Club Annual Cruise that is judged overall as best representing the tradition and spirit of yachting and the Club. Judging will be made on the basis of a yacht's preparation, presentation, and flag etiquette, as well as seamanship, courtesy, and handling by her Captain and crew. The selection is to be made by the Fleet Captain in consultation with up to three Captains of the Fleet Captain's choice.

CRUISE TROPHIES

NYYC Ahead Trophy Project – Cruising Rule Cup



Cruising Rule Cup
Gorham Manufacturing Co., Providence
1990

Trophy History: Presented to the Club in 1990 by William Woodward, III to commemorate the inception of the New York Yacht Club Cruising Rule.

Awarding of the Cruising Rule Cup: This trophy is awarded at the discretion of the Flag Officers to a member owned and sailed yacht in the Cruising Rule Class that best exemplifies the traditions of yachting by her upkeep and appearance and performs admirably on the cruise.

NYYC Ahead Trophy Project – Cygnet Cup



Cygnet Cup
Unknown maker
c. 1845

Trophy History: The Cygnet Cup is NYYC's first trophy, awarded in 1845 for the Club's inaugural regatta – in those early days called a "trial of speed." The silver cup presented was valued at the amount of the entrance fees. The race took place on July 17, starting off Commodore John Cox Stevens's property at Elysian Fields in Hoboken, NJ. The 40-mile course around New York Harbor would continue to be used for the next 20 years. William Edgar's schooner CYGNET led the fleet. The cup that Edgar won is now known as the Cygnet Cup and was returned to competition in 1947 as a perpetual trophy for outstanding performance on the Annual Cruise. The swan finial on the trophy's lid suggests that it was commissioned after the race and that the name of the winner, CYGNET, was incorporated in the cup's design

Awarding of the Cygnet Cup: In its discretion, the Race Committee of the New York Yacht Club may determine the outstanding performance of any yacht enrolled and taking part in the Annual Cruise of the club and award this Cup in recognition thereof.

CRUISE TROPHIES



Astor Cup

West & Son, Dublin

c. 1914

Trophy History: Following the death of Ogden Goelet in 1897, John Jacob Astor provided two cups per year to follow in the tradition of the Goelet Cups, which were competed for at Newport in August with time allowances. Since 1986, the permanent trophy has been the Astor Cup for Schooners that was awarded to ENCHANTRESS in 1914. Member Harold S. Vanderbilt won the Astor Cup nine times in various yachts, Frederick E. Hood six times and the first female member to be awarded the Astor Cup was Eleanor Burgess in 2020.

Awarding of the Astor Cup: The Astor Cup has remained in competition since 1899, except in wartime. It is raced for during the NYYC Annual Cruise on Astor Cup race day by member yachts according to their handicap division.



Una Cup

Ball, Tompkins & Black, Maker

1850

Trophy History: The Una Cup is the second-oldest trophy in the NYYC collection. At the suggestion of Commodore DeCoursey Fales, the Cup was put into competition in 1947. It was first awarded at the 1850 Annual Regatta by the yacht UNA, a sloop built in 1847 by George Steers for James M. Waterbury. Both Willard M. Sweetser, Jr. and Patricia J. Young have won the Una Cup five times since 2000.

Awarding of the Una Cup: Currently the trophy is raced for by Class II on Astor Cup race day during the Annual Cruise.

CRUISE TROPHIES



Corsair Cup

R & S Garrard & Co., London
19th c.

Trophy History: Presented in 1956 by Commodores Junius S. Morgan and Henry S. Morgan. This perpetual trophy was named for four different Morgan family yachts (three of which were flagships) enrolled in the Club for a period of over 60 years.

Awarding of the Corsair Cup: Historically, the Corsair Cup has been competed for annually as the Flag Officers may decide. Currently, the cup is raced for by Class III during Astor Cup race day during the NYYC Annual Cruise.



Commodore W. Mahlon Dickinson Cup

Tiffany & Co., New York
c. 1969

Trophy History: Presented in October 1969 by the Trustees in memory of Commodore Dickerson, who died suddenly while leading the Annual Cruise that year.

Awarding of the Commodore W. Mahlon Dickinson Cup: The Commodore W. Mahlon Dickinson Cup is to be competed for annually in whatever manner the Race Committee may decide. Since 1970 the Cup has been raced for by a class on the NYYC Annual Cruise.